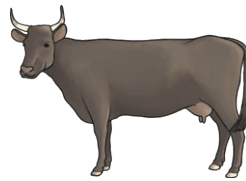


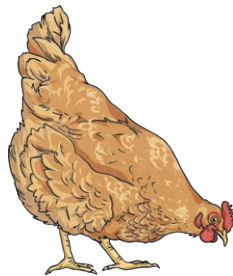
# Where Does Our Food Come From?

Use the Internet and books from the library to find out where the food you eat comes from and how it changes before it ends up on your plate. If you know anyone who works with food, for example as a butcher, a farmer, in a supermarket or a restaurant, they may be able to help with your research too. Write in the middle boxes about how the food we eat reaches our plates.

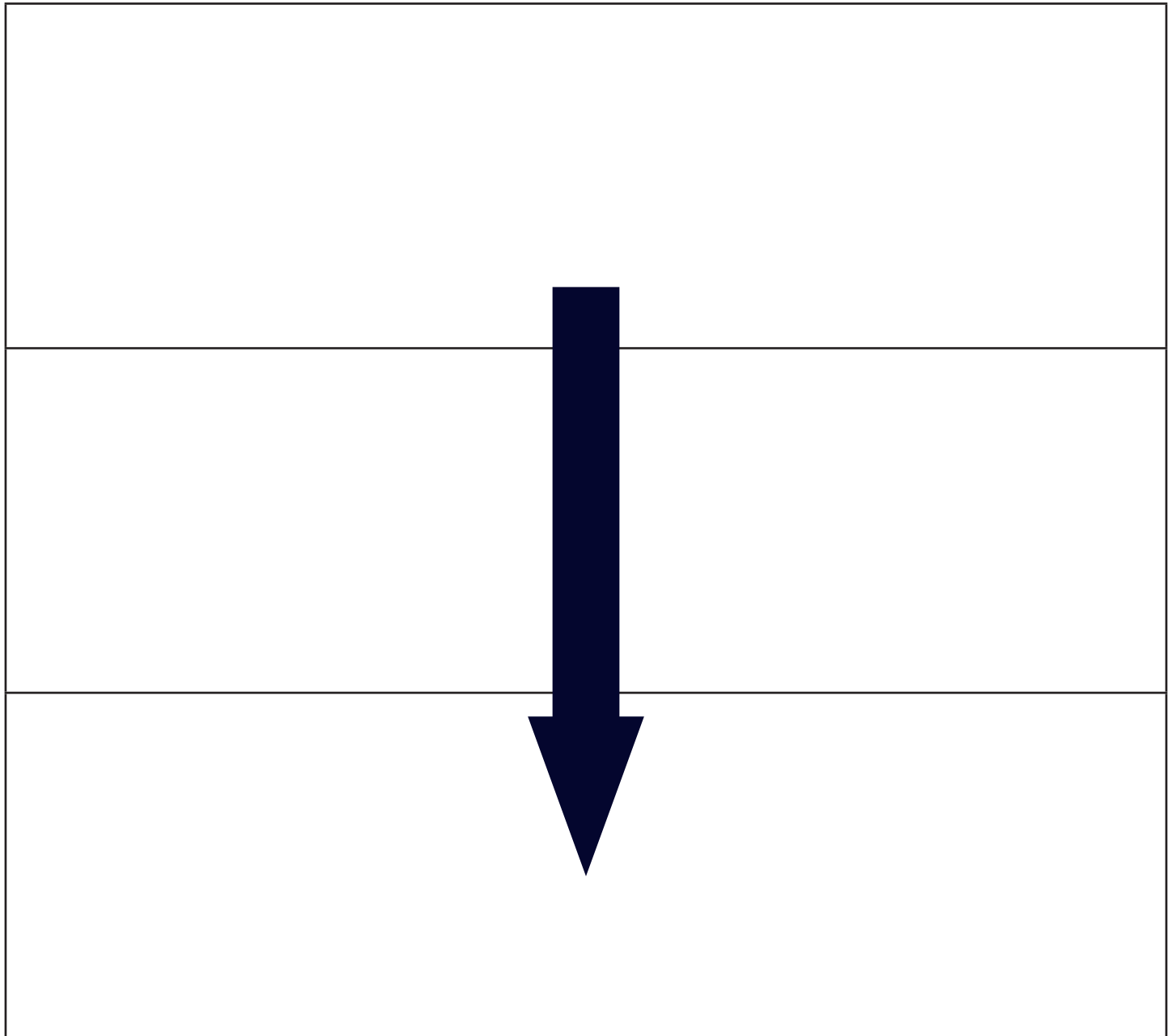




Now, draw the missing pictures as well as writing what you have found out.



Finally, choose your own favourite food and draw and write about where it comes from.



A large rectangular box divided into three horizontal sections by two lines. A large, dark blue arrow points downwards from the top section into the middle section.