

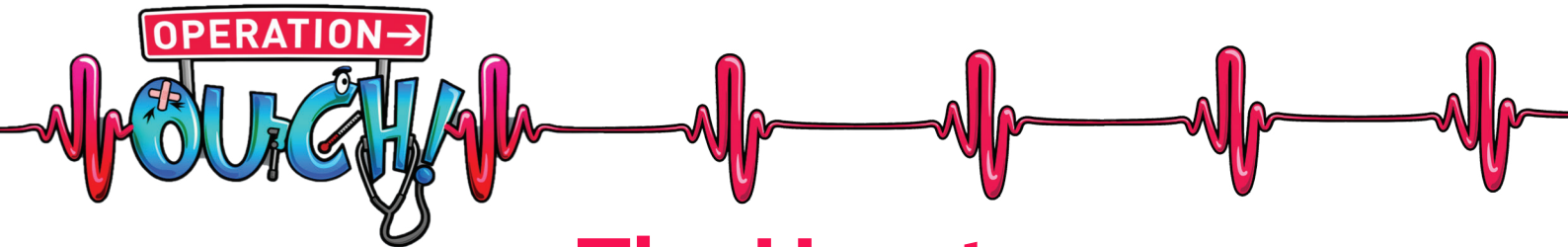
# Instructions

1. Use 'The Heart' page, showing a human torso, as your base.
2. Cut out and stick the backbone onto the torso in the correct place.
3. Cut out each sheet of body parts in turn and glue into the correct place using the flaps attached.

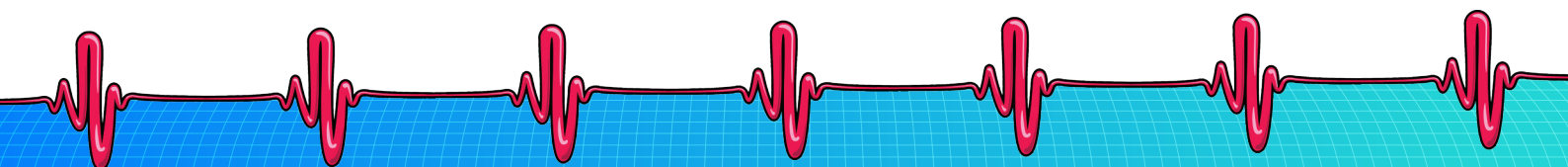


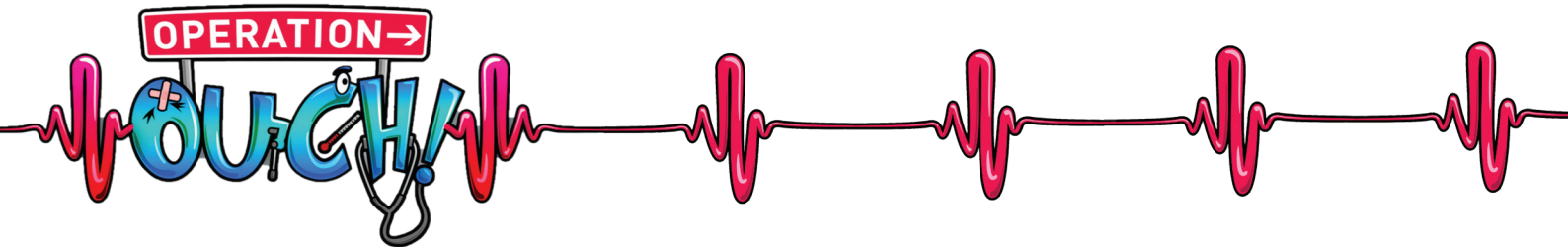
To ensure the safety of the children in your setting, it is your responsibility to assess whether adult supervision or other appropriate safety measures are required when using scissors.





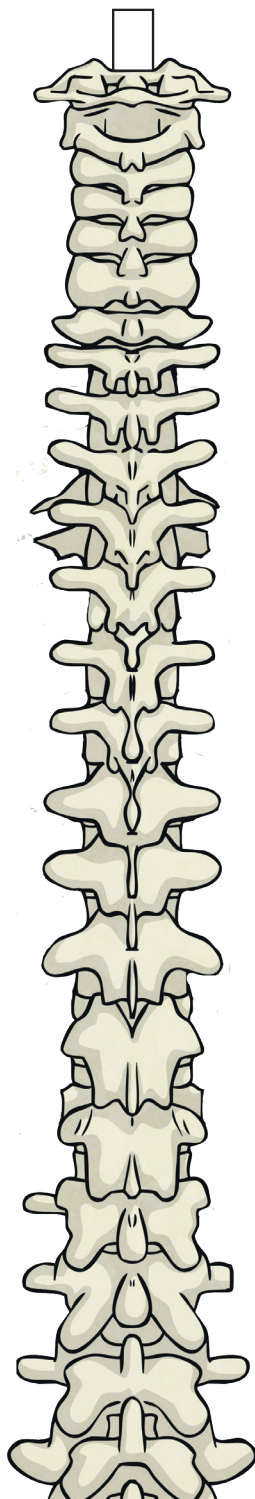
# The Heart

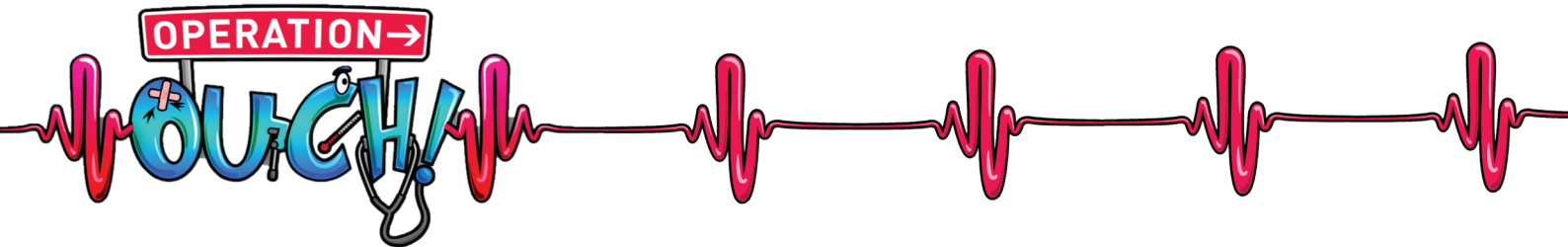




# 1. The Backbone

Cut this out and glue on to the correct place on the torso.

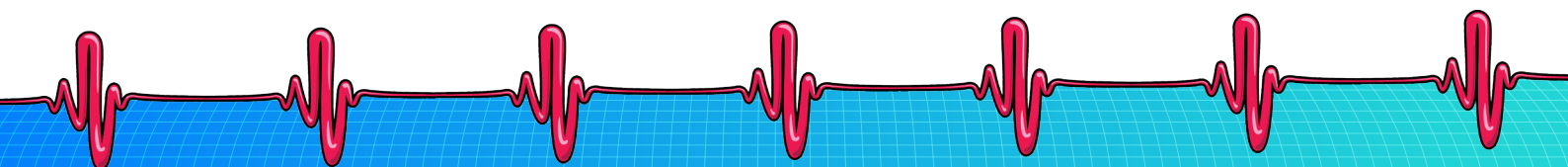
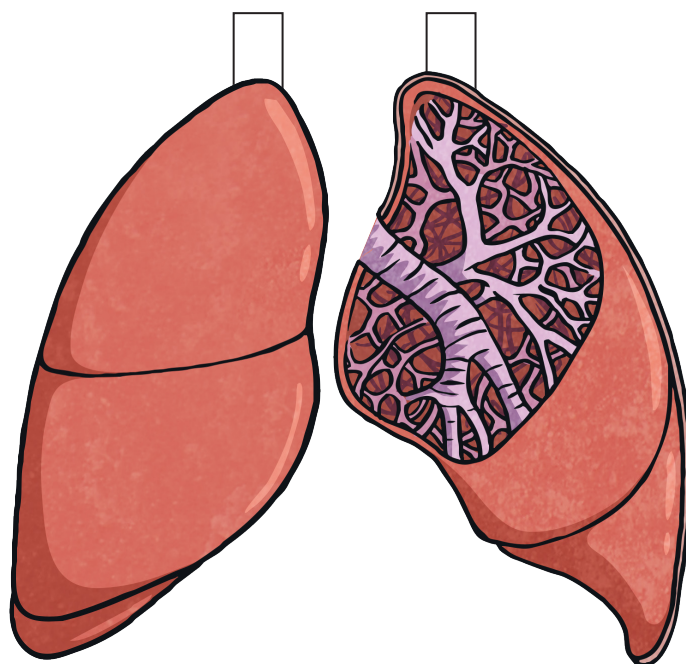


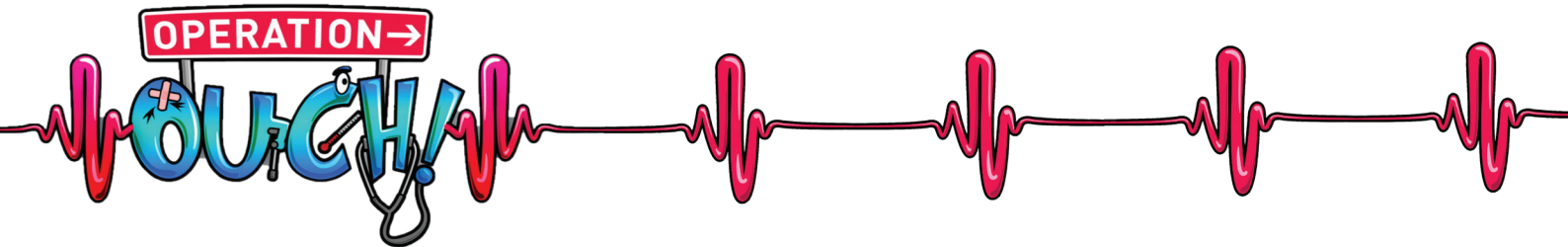


## 2. The Lungs

Cut these out and glue the flaps on to the correct places on the torso.

The lungs are crucial to how the heart works as they provide the oxygen for the blood as well as getting rid of the carbon dioxide from the blood returning to the heart.



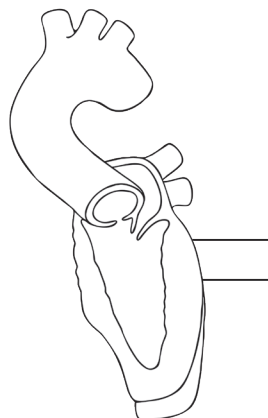


## 3. Inside the Heart

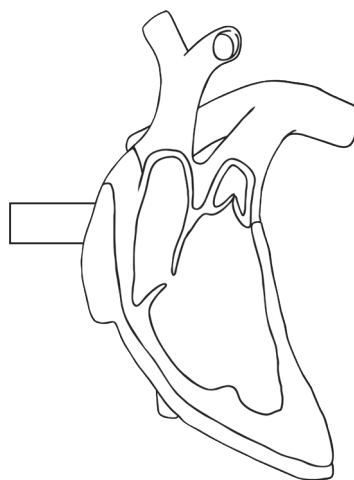
Cut this out and glue the flaps on to the correct place on the torso – in between the lungs.

Using a red pencil or felt tip, colour in the areas of oxygenated blood. Then, using a blue pencil or felt tip, colour in the areas of deoxygenated blood.

### 3a. The Left Side (stick on first)

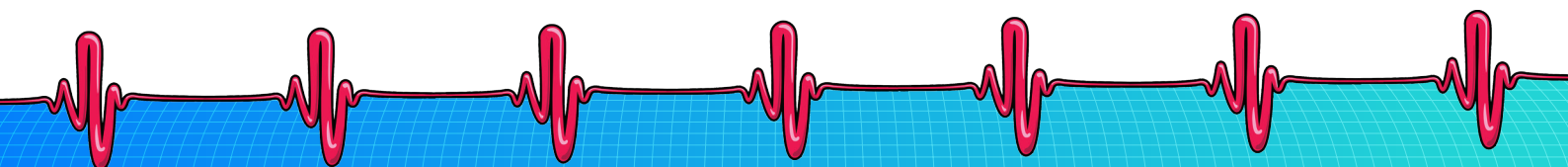


### 3b. The Right Side (stick on second)

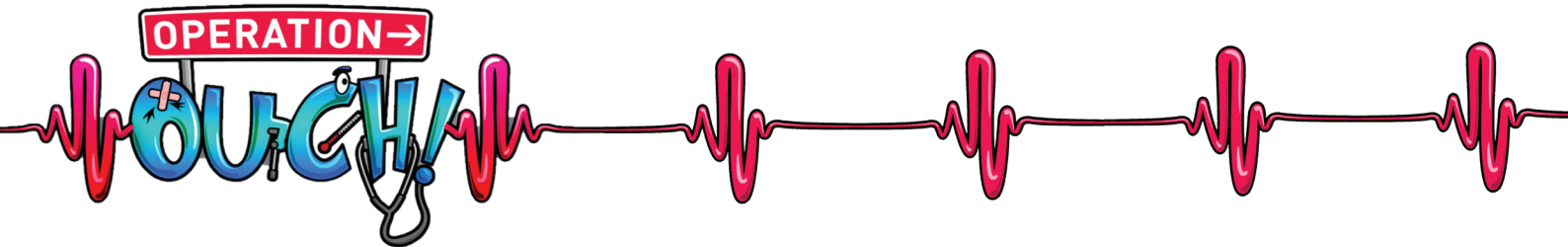


3c. Now, stick on these labels or write the names in the correct places.

Left atrium	Left ventricle
Right atrium	Right ventricle
Inferior vena cava	

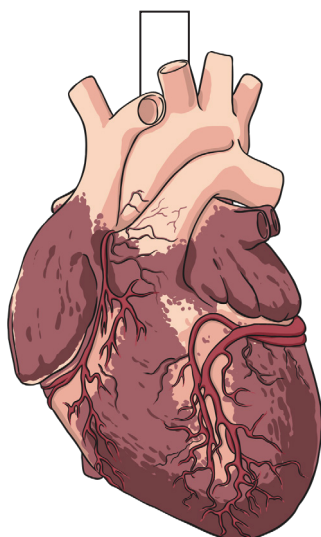






## 4. Outside the Heart

Cut this out and glue the flap on to the correct place on the torso – on top of the 'Inside the Heart' illustrations.

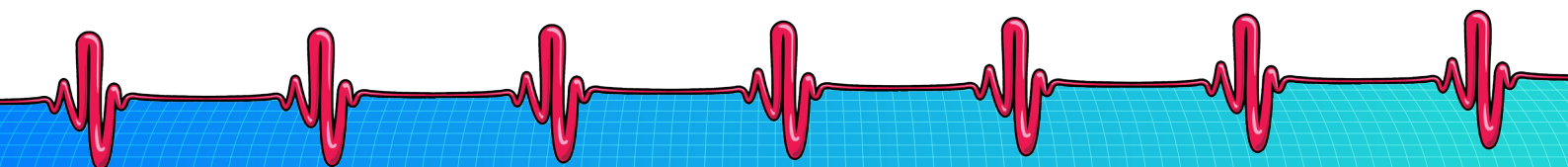


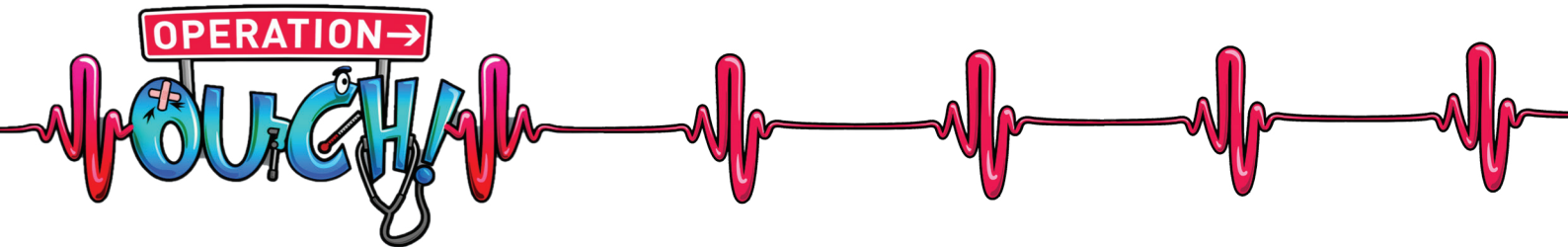
**4a. Now, stick on these labels or write the names in the correct places.**

Pulmonary artery

Aorta

Superior vena cava

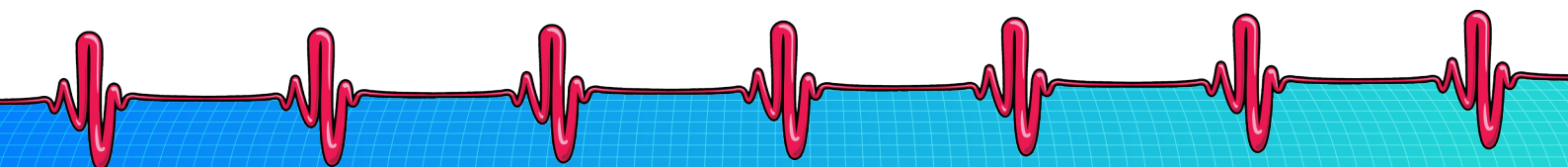
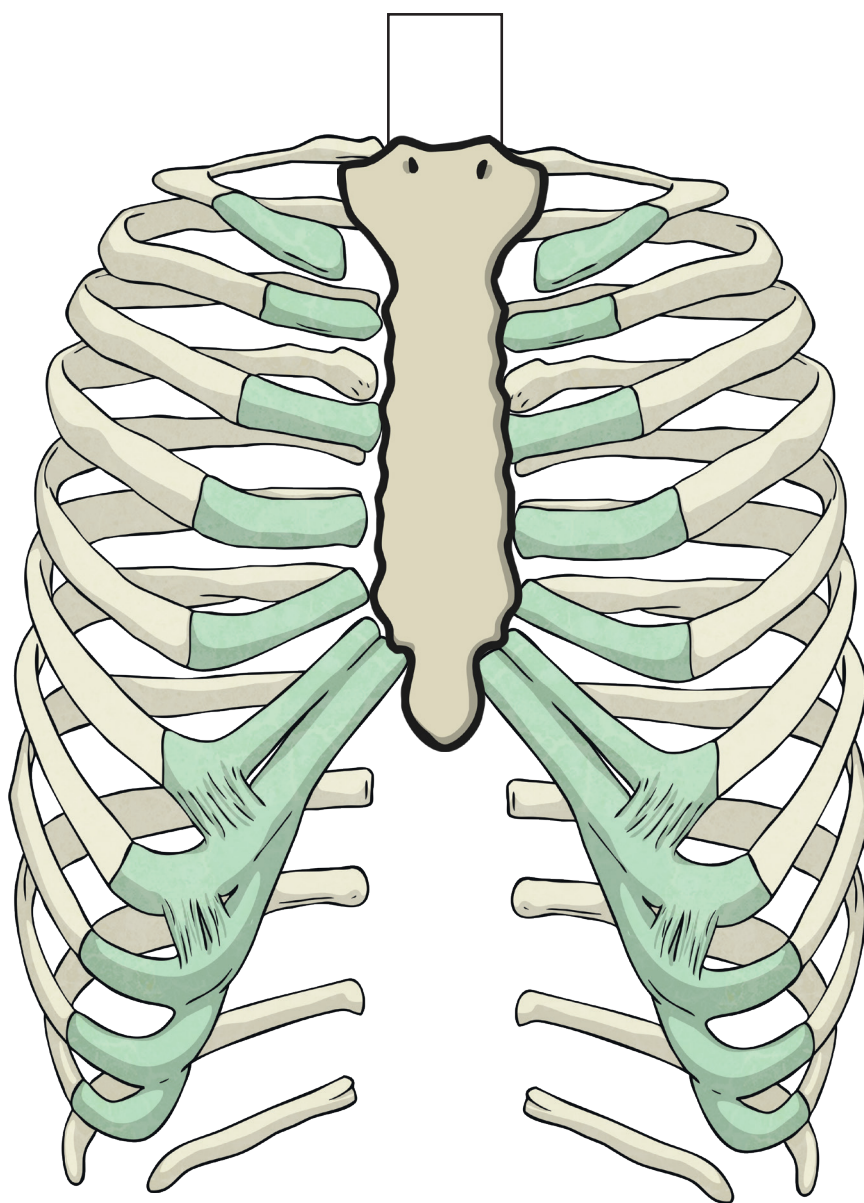


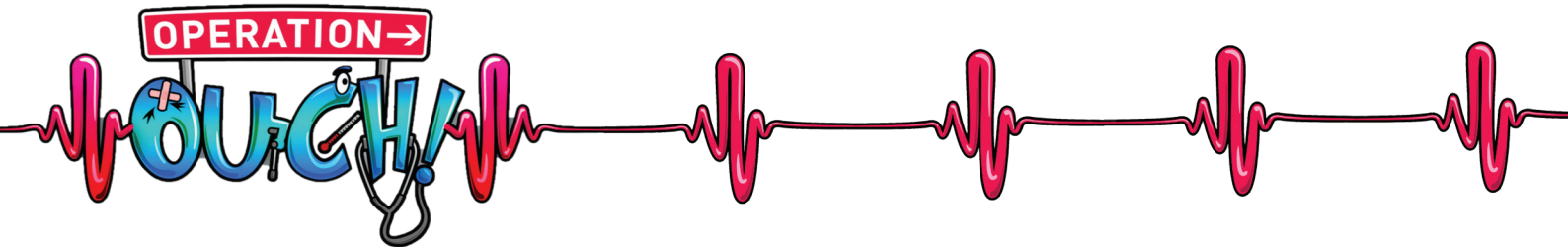


## 5. The Sternum and Ribs

Cut these out and glue the flap on to the correct place on the torso.

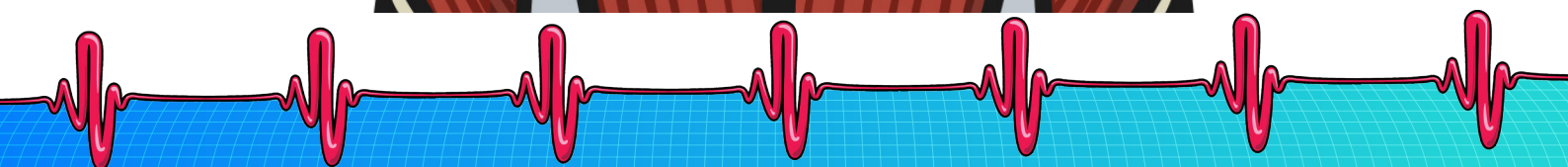
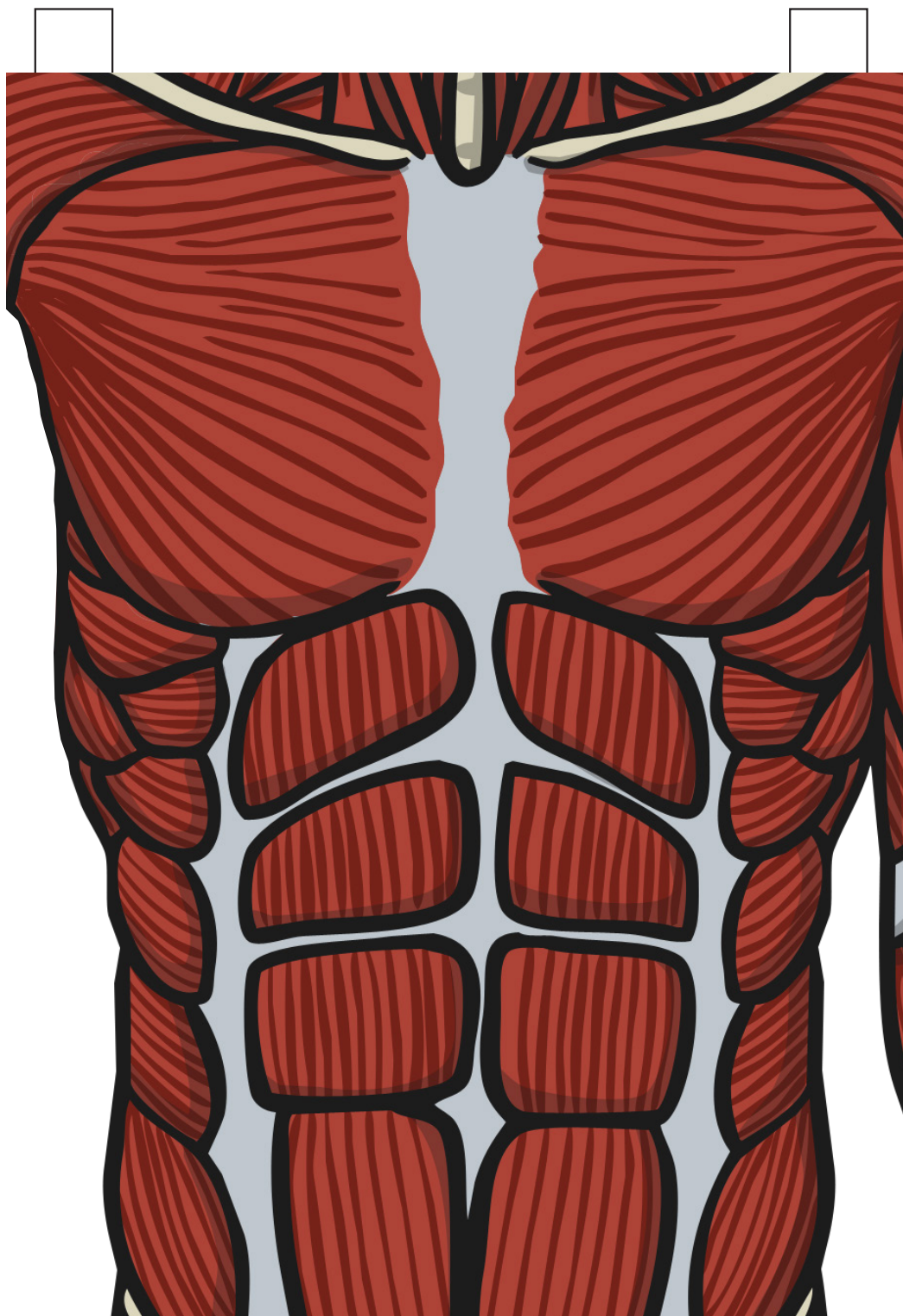
The sternum and ribs protect the heart and other organs.



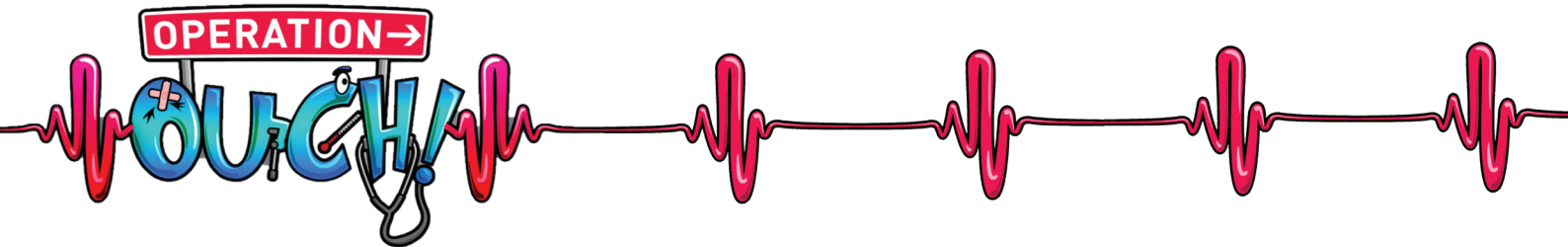


## 6. The Muscles

Cut these out and glue the flaps on to the correct places on the torso to cover the ribcage.







## 7. The Skin

Cut these out (in two halves) and glue the flaps on to the correct places on the torso to cover all of the insides.

