

Timpani

Symphony no. 10, 2nd movement, original key

Dmitri SHOSTAKOVICH
arr. Gareth Glyn & Andrew Smith

71 Allegro (♩ = 120) 72 73

20 9 1 19

74 75

50 16 1

f *f*

73 76 77

3 7

f *f*

89 78

p cresc. *ff*

98

1 1

106 79

2 3

ff *fff*

116 80 81

9 7 9

82 83 84

141 6 1 15 9

Timpani

172

85



183



194



203

86



210

87

88



232

89

90



91

92

93

253



94

96

280



97

98

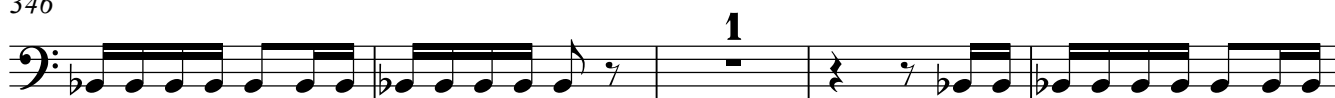
99

320



Timpani

346



351

