

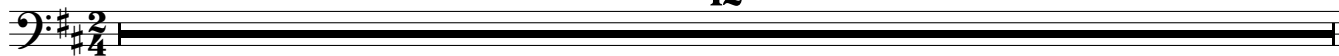
Double Basses (Intermediate)

Trumpet Concerto, Finale

Joseph HAYDN
Arr. Andrew J Smith

Allegro ♩ = 115

12



13



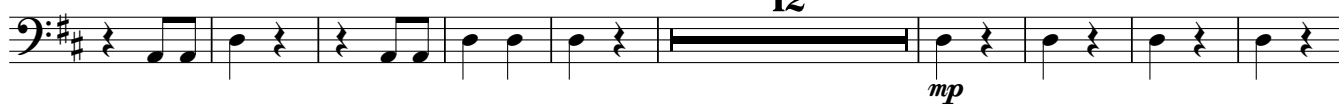
21



31



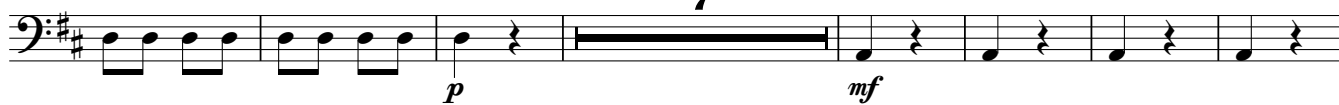
40



61



70



84



93



100



110



Double Basses (Intermediate)

118 arco

f

125 **12**

f

143 **2** pizz. arco **2** pizz. **7**

p *p*

162 arco

f

173 **4**

p *p*

185

192 arco

f

200

p *f*

210 **3**

mp *f* *p*

221 **11** pizz. arco

p

241 arco **5**

f *p*

256 **ff**

ff

266

Musical notation for measure 266, bass clef, key signature of two sharps (F# and C#). The measure contains ten notes: a half note chord (F#2, C#3), a quarter note (F#3), a half note chord (F#3, C#4), a quarter note (F#3), a half note chord (F#3, C#4), a quarter note (F#3), a half note (F#3), a quarter note (F#3), a half note (F#3), and a quarter note (F#3). Dynamics are *pp* at the start and *f* at the end.

276

Musical notation for measure 276, bass clef, key signature of two sharps. The measure contains ten notes: a half note (F#3), a quarter rest, a half note (F#3), a quarter rest, a half note (F#3), a quarter rest, a half note (F#3), a quarter rest, a half note (F#3), and a quarter rest. Dynamics are *f* at the start and *p* at the end. A *cresc.* marking is present at the very end of the measure.

288

Musical notation for measure 288, bass clef, key signature of two sharps. The measure contains ten notes: a half note (F#3), a quarter note (F#3), a half note (F#3), a quarter note (F#3), a half note (F#3), a quarter note (F#3), a half note (F#3), a quarter note (F#3), a half note (F#3), and a quarter note (F#3). Dynamics are *f* at the start and *ff* at the end.