

Contrabass

GRASSWALK

BBC Ten Pieces
Grade 5 and above

Laura Shighihara
arr. Emily Pedersen

$\text{♩} = 108$

8 pizz *mf*

12 *mf* [A] 4

19

23 arco *mf*

28 [B] *mp*

32

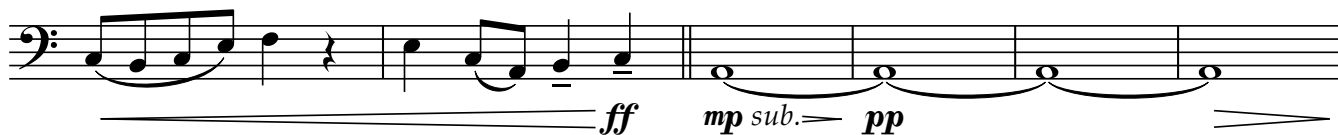
37 [C] *mf*

41

Detailed description of the musical score: The score is written for Contrabass in 4/4 time. The tempo is 108 beats per minute. The key signature has one sharp (F#). The piece is divided into sections marked with letters A, B, and C. Section A starts at measure 12 and ends at measure 15. Section B starts at measure 28 and ends at measure 31. Section C starts at measure 37 and ends at measure 40. The dynamics range from mezzo-forte (mf) to mezzo-piano (mp). The articulation includes pizzicato (pizz) and arco (arco). The score includes various musical notations such as rests, eighth notes, quarter notes, and slurs.

45 **D**

50

E

56

F

12



71

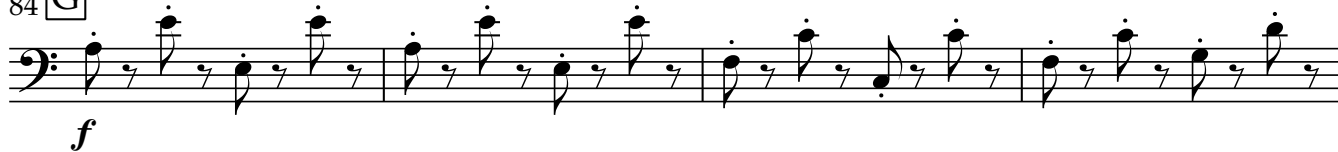


76

pizz.



79

84 **G**

88



92

arco

96 **H**

100

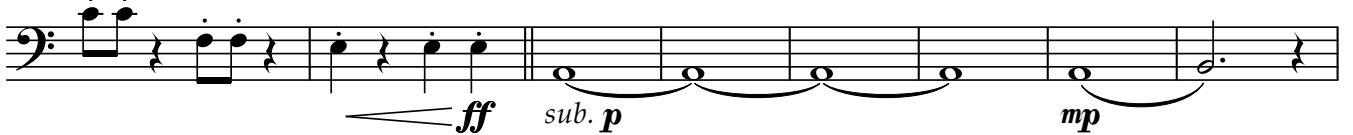
104 **I**

108

112 **J**

117

K



125



133

