

Contrabass

# GRASSWALK

BBC Ten Pieces  
Beginner

Laura Shighihara  
arr. Emily Pedersen

♩ = 108  
Open Strings  
pizz.



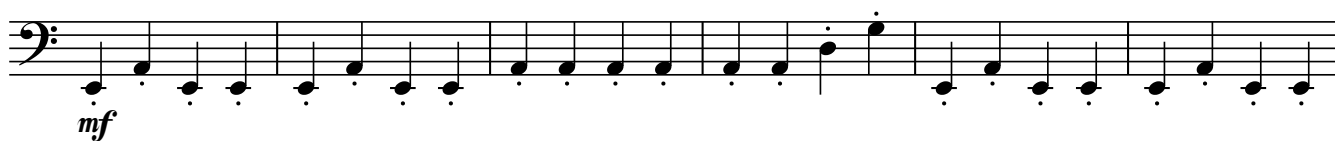
6



11



17 **A**



23



29 **B**



35

**C**



40



The bass line is written on a single staff with a bass clef. It begins with a forte (*f*) dynamic marking. The melody consists of eighth and quarter notes, with some notes beamed together. The key signature has one flat (B-flat), and the time signature is 2/4. The piece concludes with a double bar line and a repeat sign.

16

[illegible][illegible]

The bass line of 'The Rose Tree' is written on a single staff with a bass clef. It consists of 16 measures. The notes are: G2, A2, B2, C3, D3, E3, F3, G3, A3, B3, C4, D4, E4, F4, G4, A4. The notes are grouped into four measures of four notes each. The first measure is G2, A2, B2, C3. The second measure is D3, E3, F3, G3. The third measure is A3, B3, C4, D4. The fourth measure is E4, F4, G4, A4. The notes are written as quarter notes.

**G**

[illegible]

The bass line of 'The Rose Tree' is written on a single staff with a bass clef. It consists of 12 measures. The first measure has a whole note G2. The second measure has a whole note F2. The third measure has a whole note E2. The fourth measure has a whole note D2. The fifth measure has a whole note C2. The sixth measure has a whole note B1. The seventh measure has a whole note A1. The eighth measure has a whole note G1. The ninth measure has a whole note F1. The tenth measure has a whole note E1. The eleventh measure has a whole note D1. The twelfth measure has a whole note C1. The piece ends with a double bar line.

[illegible]

I

[illegible]

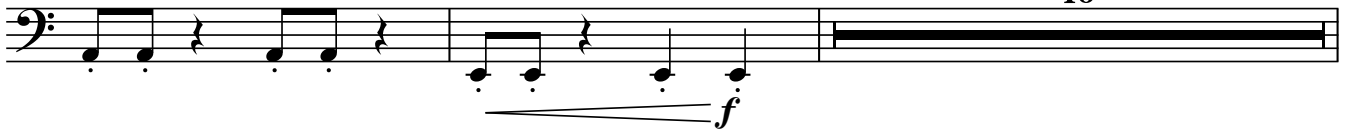
The bass line of 'The Rose Tree' is written on a single staff in bass clef. It consists of five measures. The first measure contains two eighth notes: G2 and F2. The second measure contains two eighth notes: E2 and D2. The third measure contains two eighth notes: C2 and B1. The fourth measure contains two eighth notes: A1 and G1. The fifth measure contains a single eighth note: F1, followed by a whole rest.

The bass line of 'The Rose Tree' is written on a single staff with a bass clef. It consists of five measures. The first measure contains a quarter note G2, a quarter note A2, and a quarter rest. The second measure contains a quarter note G2, a quarter note A2, and a quarter rest. The third measure contains a quarter note G2, a quarter note A2, and a quarter rest. The fourth measure contains a quarter note G2, a quarter note A2, and a quarter rest. The fifth measure contains a quarter note G2, a quarter note A2, and a quarter rest.

117

K

16



135

