

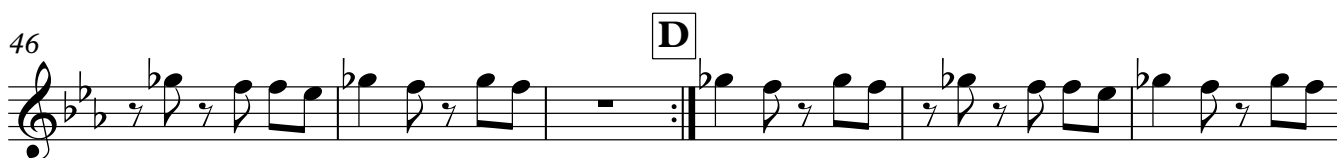
Alto Saxophones (Grade 4/5)

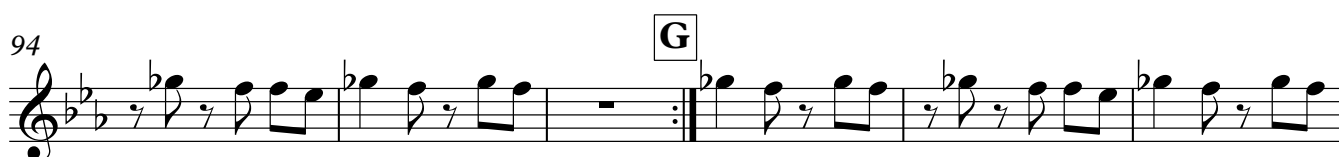
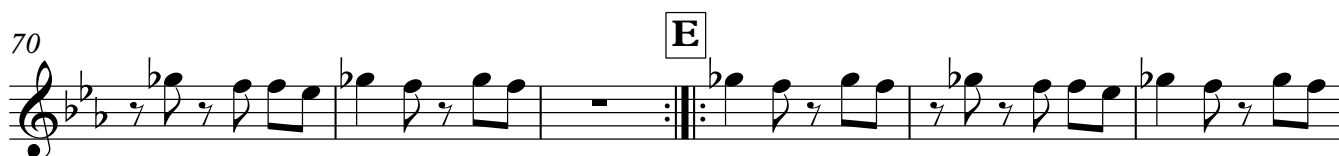
Section 6 - Music for 18 Musicians

Steve Reich

arr. Iain Farrington

Lively (maximum tempo ♩ = 204)





113

113

119

The musical score for Example 119 is written on a single staff. It begins with a treble clef, a key signature of two flats (B-flat and E-flat), and a common time signature (C). The melody starts with a quarter rest, followed by a quarter note G4, an eighth note F#4, and a quarter note E4. This is followed by a repeat sign (double bar line with two dots) and a fermata (a horizontal line with a semi-circle) over a quarter note G4. The melody then continues with a quarter note F#4, an eighth note E4, and a quarter note D4. This is followed by a quarter note C4, an eighth note B3, and a quarter note A3. The piece ends with a quarter note G3.

125

125

131

Exercise 131 is a single-staff piece in G-flat major (one flat). It begins with a treble clef. The melody is written in eighth and quarter notes. The first measure contains a quarter note G4, an eighth note F4, and an eighth rest. The second measure contains an eighth rest, an eighth note E4, a quarter note D4, and an eighth rest. The third measure contains an eighth rest, an eighth note C4, a quarter note B3, and an eighth rest. The fourth measure contains an eighth rest, an eighth note A3, a quarter note G3, and an eighth rest. The fifth measure contains an eighth rest, an eighth note F3, a quarter note E3, and an eighth rest. The sixth measure contains an eighth rest, an eighth note D3, a quarter note C3, and an eighth rest. The seventh measure contains an eighth rest, an eighth note B2, a quarter note A2, and an eighth rest. The eighth measure contains an eighth rest, an eighth note G2, a quarter note F2, and an eighth rest. The ninth measure contains an eighth rest, an eighth note E2, a quarter note D2, and an eighth rest. The tenth measure contains an eighth rest, an eighth note C2, a quarter note B1, and an eighth rest. The eleventh measure contains an eighth rest, an eighth note A1, a quarter note G1, and an eighth rest. The twelfth measure contains an eighth rest, an eighth note F1, a quarter note E1, and an eighth rest. The thirteenth measure contains an eighth rest, an eighth note D1, a quarter note C1, and an eighth rest. The fourteenth measure contains an eighth rest, an eighth note B1, a quarter note A1, and an eighth rest. The fifteenth measure contains an eighth rest, an eighth note G1, a quarter note F1, and an eighth rest. The sixteenth measure contains an eighth rest, an eighth note E1, a quarter note D1, and an eighth rest. The seventeenth measure contains an eighth rest, an eighth note C1, a quarter note B1, and an eighth rest. The eighteenth measure contains an eighth rest, an eighth note A1, a quarter note G1, and an eighth rest. The nineteenth measure contains an eighth rest, an eighth note F1, a quarter note E1, and an eighth rest. The twentieth measure contains an eighth rest, an eighth note D1, a quarter note C1, and an eighth rest. The piece ends with a repeat sign.

[illegible]

142

142

148

Musical notation for measure 148, featuring a treble clef, key signature of two flats, and a sequence of eighth and quarter notes.

153

157 **J**

The image shows a single musical staff for measure 157. The measure begins with a treble clef, a key signature of two flats (B-flat and E-flat), and a 'J' time signature. The notation consists of eighth and sixteenth notes with rests, forming a rhythmic pattern across the staff.

161

2