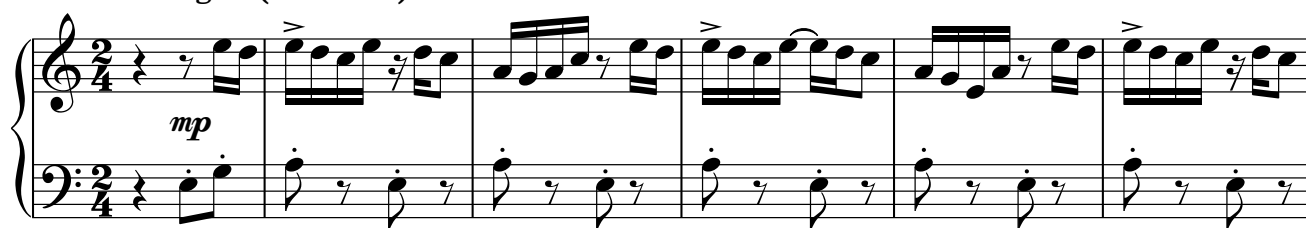


Juba Dance

Florence Price
arr. Iain Farrington

Allegro (♩ = c.104)



42

The musical score for measures 42-48 of 'The Swan' by Maurice Ravel. The score is for piano and features a treble and bass staff. The melody in the treble staff is characterized by grace notes and slurs, while the bass staff provides a simple harmonic accompaniment with whole and half notes.

49 C

49 C

55

The musical score for measures 55-60 of 'The Swan' by Camille Saint-Saëns. The score is in 3/4 time and features a piano (p) and mezzo-forte (mf) dynamic. The melody is in the right hand, and the bass line is in the left hand. The key signature has one flat (B-flat). The score includes various musical notations such as eighth notes, quarter notes, and rests.

73

p

82 **E**

Musical score for Example 82, marked 'E'. The score is in 2/4 time and consists of two staves. The upper staff is in treble clef and the lower staff is in bass clef. The key signature has one sharp (F#). The upper staff contains a melodic line with eighth and sixteenth notes, including slurs and accents. The lower staff contains a bass line with half notes and whole notes. The piece concludes with a final measure in the upper staff featuring a half note and a whole note, and a final measure in the lower staff featuring a half note and a whole note. The dynamic marking 'mf' is present in the final measure of the lower staff.

90

Measures 90-97. Treble clef, key of D major. Measure 90 starts with a piano (*p*) dynamic. The right hand plays eighth-note patterns with slurs and accents. The left hand plays whole notes. Measure 97 ends with a mezzo-forte (*mf*) dynamic.

98 **F**

Measures 98-104. Treble clef, key of D major. Measure 98 starts with a piano (*p*) dynamic. The right hand plays eighth-note patterns with slurs and accents. The left hand plays whole notes. Measure 104 ends with a mezzo-forte (*mf*) dynamic.

105

Measures 105-110. Treble clef, key of D major. Measure 105 starts with a piano (*p*) dynamic. The right hand plays eighth-note patterns with slurs and accents. The left hand plays whole notes. Measure 110 ends with a forte (*f*) dynamic.

111 rit. **G** a tempo

Measures 111-118. Treble clef, key of D major. Measure 111 starts with a piano (*p*) dynamic. The right hand plays eighth-note patterns with slurs and accents. The left hand plays whole notes. Measure 118 ends with a mezzo-forte (*mf*) dynamic.

119 **H**

Measures 119-124. Treble clef, key of D major. Measure 119 starts with a piano (*p*) dynamic. The right hand plays eighth-note patterns with slurs and accents. The left hand plays whole notes. Measure 124 ends with a mezzo-forte (*mf*) dynamic.

125

Measures 125-130. Treble clef, key of D major. Measure 125 starts with a piano (*p*) dynamic. The right hand plays eighth-note patterns with slurs and accents. The left hand plays whole notes. Measure 130 ends with a fortissimo (*ff*) dynamic.

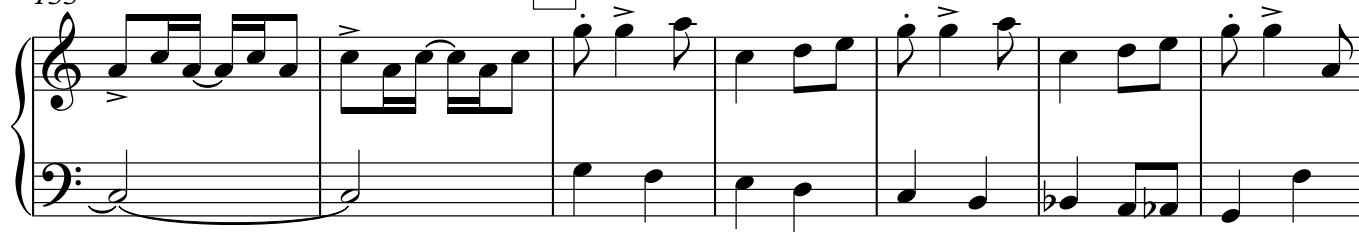
130

135 **I**

142

149 **J**

155

K Slower

162

L

Piano (Grade 4/5)
poco rit. Tempo primo

169

p

178

M

ff

2

2

186

2