

III. Magic (from *Storm*)

Judith Weir, Arr. Ellen O'Brien

Overview

There are 3 sections of this piece which can be played individually or together. Sections may be layered so instruments can be added/removed during the piece.

Section 1 "Elves":

Section 2 "Magic spell" (Improv)

Section 3 "Moonshine"

The 'transition' section is designed to be uploaded on a switch or played as an mp3 to move between sections with a 'magic sound'. The 'magic sound' could also be another sound. If group are more 'exploratory', section 2 is suggested as the best option (especially for ThumbJam and Clarion).

Melody 2 and 3 are simplified versions of Melody 1. The arrangement works with piano/backing and any selection of parts.

Instrument Suggestions:

Melody (1/2/ 3): Any melodic instrument e.g. strings, keyboard, tuned percussion, woodwind, brass (may need transposing)

Harmony 1: Clarion or any chromatic melodic instrument

Harmony 2: ThumbJam, Soundbeam or any chromatic melodic instrument

Percussion 1: Woodblock, Drums (eg. Bass drum, Snare drum, Djembe)

Percussion 2: Shakers, Tambourine, whistle

Percussion 3: Drums (eg. Bass drum, Snare drum, Djembe)

Piano/backing: May be played by teacher, advanced student or track

Technology Setup

Clarion (Suggest Harmony 1 part):

Use clarion pattern provided on Clarion App

ThumbJam (Suggest Harmony 2 part):

Scale: Chromatic on E

Octave Span: High (E5-E6)

Step (not gliss)

Figurenotes notation is available on BBC Ten Pieces Website

Multi-sensory ideas/session ideas

- Use 'cauldron' of instruments or fabrics (box/pot with lights, scarfs etc.)
- Students take it in turns to go to the cauldron and have a solo by choosing an instrument
- Make up a magic spell

3. Magic

Judith Weir
arr. Ellen O'Brien

♩=66

Section 1: Elves

Repeat ad lib.

Melody 1

Section 1: Elves

pizz.

Repeat ad lib.

Melody 2

Section 1: Elves

pizz.

Repeat ad lib.

Melody 3

Section 1: Elves

Harmony 1 (Clarion)

Section 1: Elves

Harmony 2 (ThumbJam)

Section 1: Elves

Repeat ad lib.

Percussion 1

Section 1: Elves

Repeat ad lib.

Percussion 2

pp

Section 1: Elves

Repeat ad lib.

Percussion 3

pp

♩=66

Section 1: Elves

Repeat ad lib.

Piano (Optional)

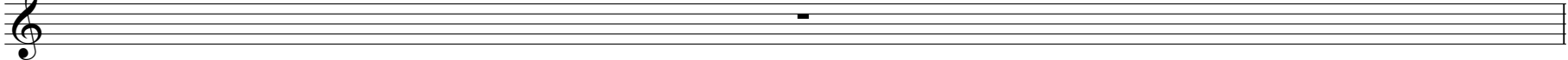
pp

pp

Transition

9 Wait for magic sound

Mel. 1

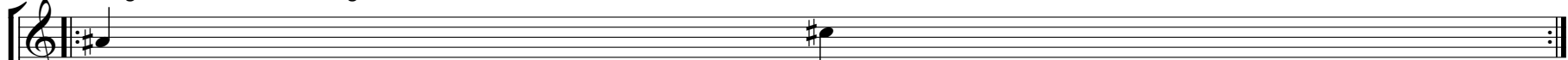


Section 2: Magic Spell

10 Play these notes when you choose

Keep repeating

Mel. 1

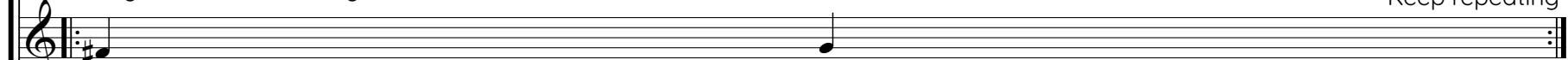


Section 2: Magic Spell

Play these notes when you choose

Keep repeating

Mel. 2

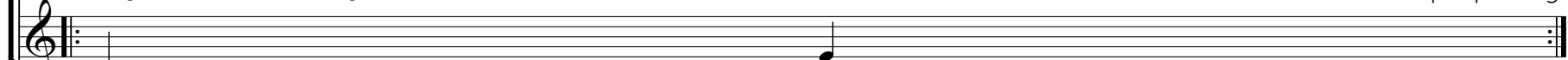


Section 2: Magic Spell

Play these notes when you choose

Keep repeating

Mel. 3



Section 2: Magic Spell

Play when you choose

Keep repeating

Har 1 (Clarion)



Section 2: Magic Spell

Play when you choose

Keep repeating

Har 2 (TJam)



Section 2: Magic Spell

Play when you choose

Keep repeating

Perc. 1



Section 2: Magic Spell

Play when you choose

Keep repeating

Perc. 2



Section 2: Magic Spell

Play when you choose

Keep repeating

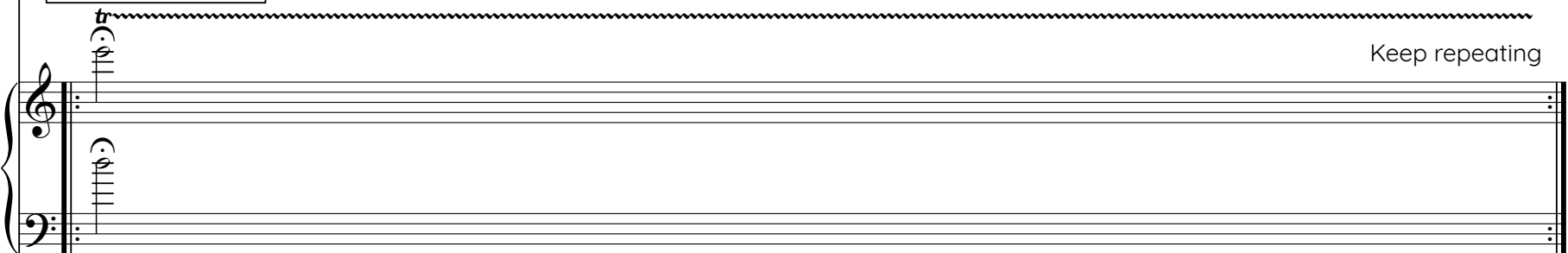
B. D.



Section 2: Magic Spell

Keep repeating

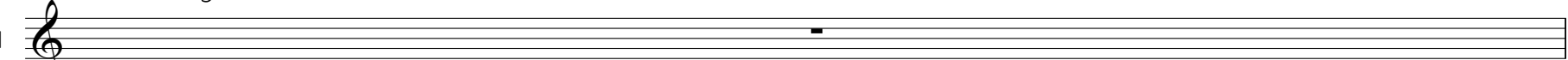
Pno.



Transition


11 Wait for magic sound

Mel. 1



Section 3: Moonshine

Mel. 1

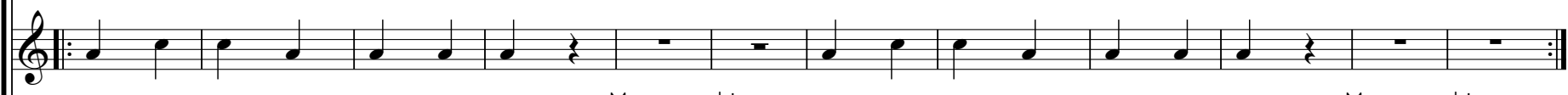


Moon - shine

Moon - shine

Section 3: Moonshine

Mel. 2




Moon - shine

Moon - shine

Section 3: Moonshine

Mel. 3




Moon - shine

Moon - shine

Section 3: Moonshine

Har 1
(Clarion)




Moon - shine

Moon - shine

Section 3: Moonshine

Har 2
(TJam)

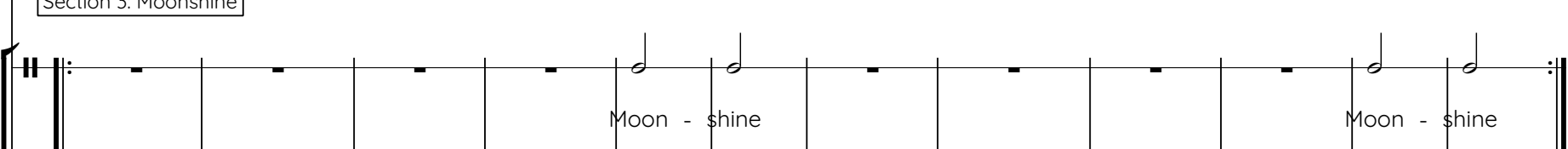


Moon - shine

Moon - shine

Section 3: Moonshine

Perc. 1

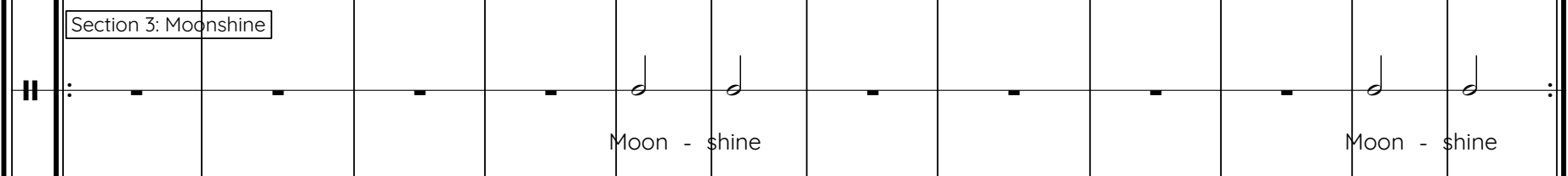


Moon - shine

Moon - shine

Section 3: Moonshine

Perc. 2




Moon - shine

Moon - shine

Section 3: Moonshine

B. D.




Moon - shine

Moon - shine

Section 3: Moonshine

Pno.



Moon - shine

Moon - shine

3. Magic

Melody 1

Judith Weir
arr. Ellen O'Brien

♩=66

Section 1: Elves

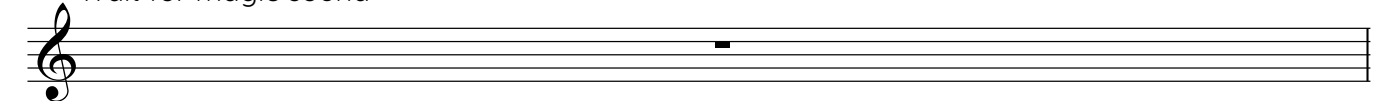


5

Repeat ad lib.




9 Wait for magic sound



Section 2: Magic Spell

10 Play these notes when you choose

Keep repeating



11 Wait for magic sound



Section 3: Moonshine

12



Moon - shine

18



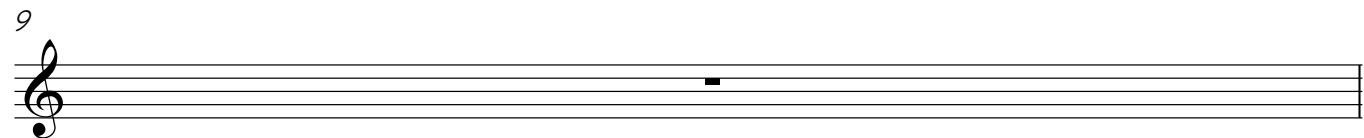
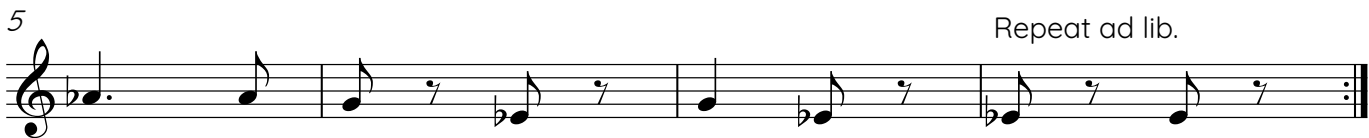
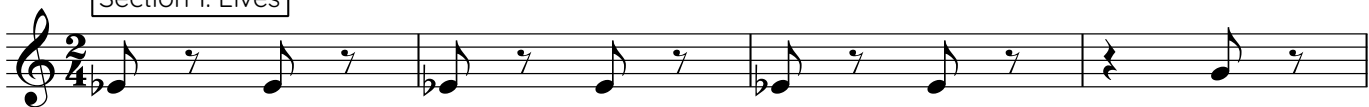
Moon - shine

3. Magic

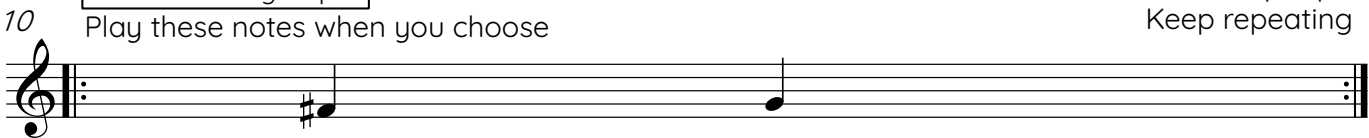
Judith Weir
arr. Ellen O'Brien

♩=66

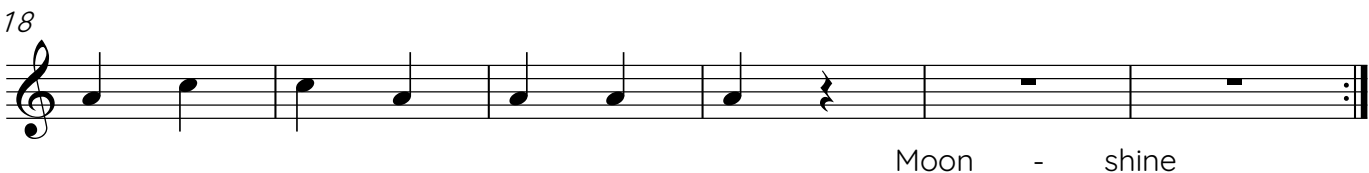
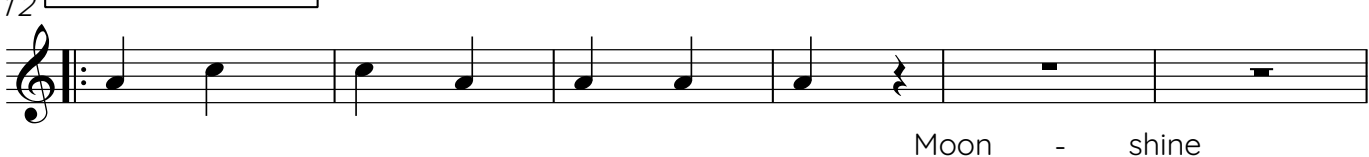
Section 1: Elves



Section 2: Magic Spell



Section 3: Moonshine



Melody 3

3. Magic

Judith Weir
arr. Ellen O'Brien

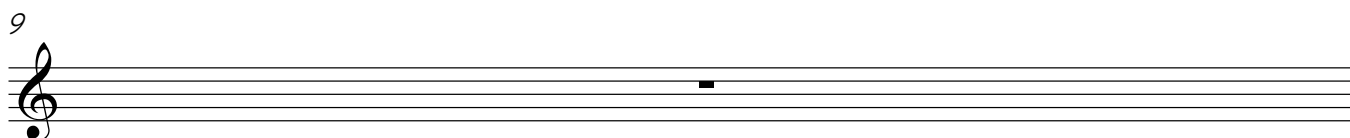
♩=66

Section 1: Elves

pizz.



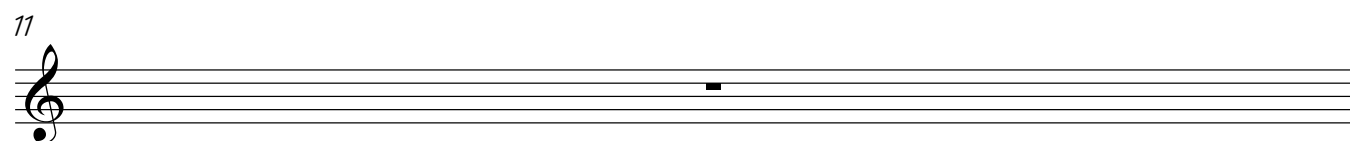
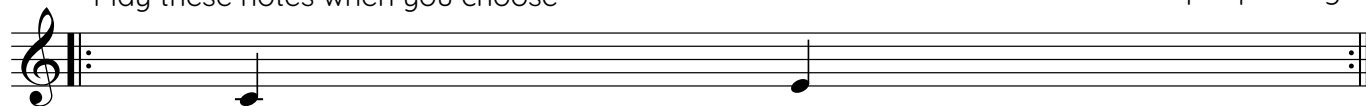
Repeat ad lib.



Section 2: Magic Spell

10 Play these notes when you choose

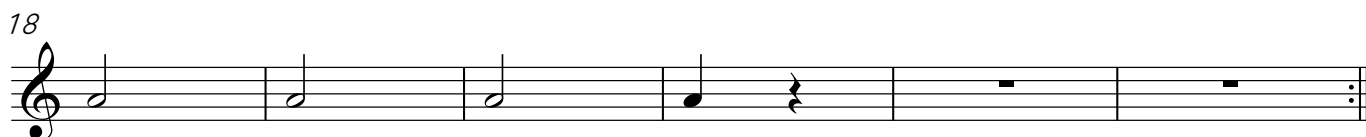
Keep repeating



Section 3: Moonshine



Moon - shine



Moon - shine

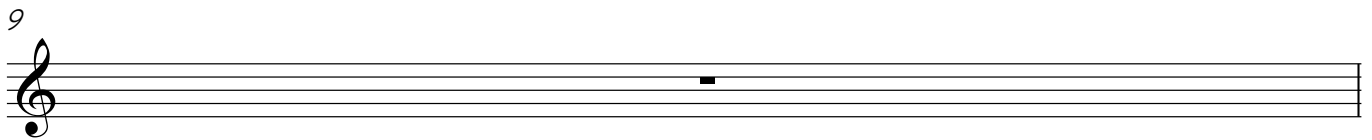
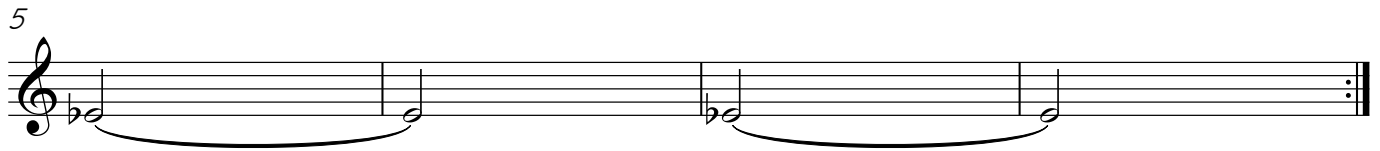
3. Magic

Harmony 1 (Clarion)

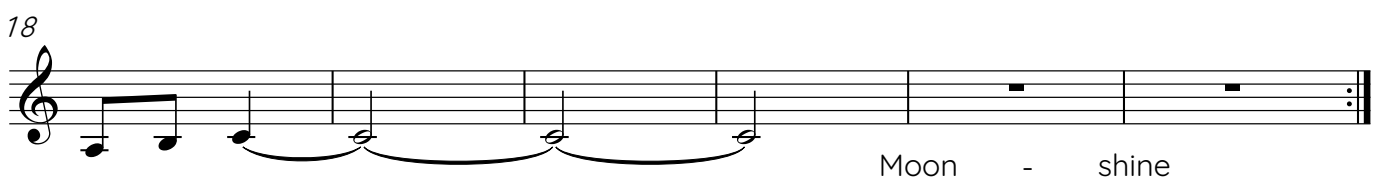
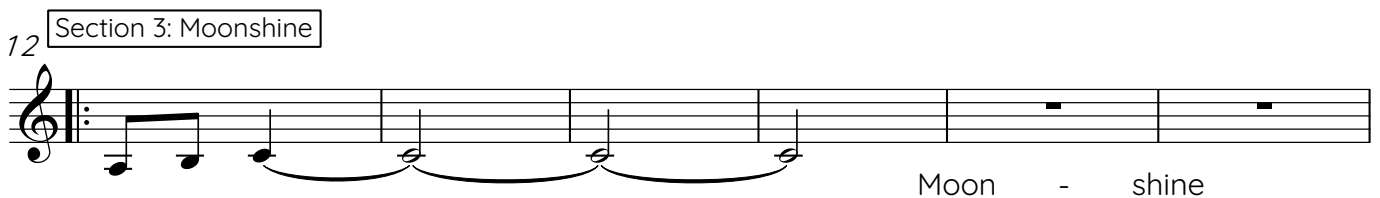
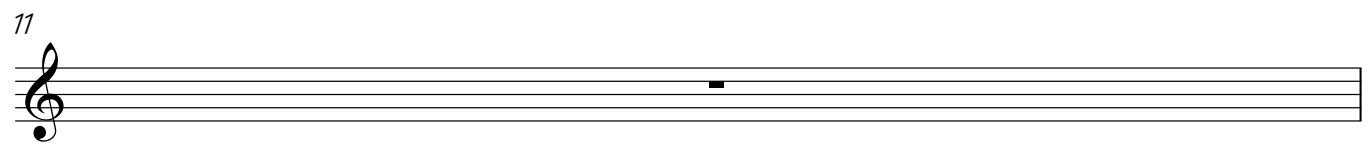
Judith Weir
arr. Ellen O'Brien

♩=66

Section 1: Elves



Section 2: Magic Spell



3. Magic

Harmony 2 (ThumbJam)

Judith Weir
arr. Ellen O'Brien

♩=66

Section 1: Elves

8

9

Section 2: Magic Spell

10 Play when you choose

6

6

11

Section 3: Moonshine

Moon - shine

18

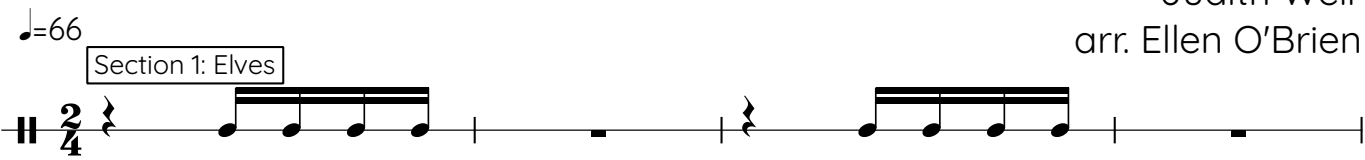
Moon - shine

3. Magic


Judith Weir
arr. Ellen O'Brien

♩=66

Section 1: Elves



5



Repeat ad lib.

9



Section 2: Magic Spell

10

Play when you choose



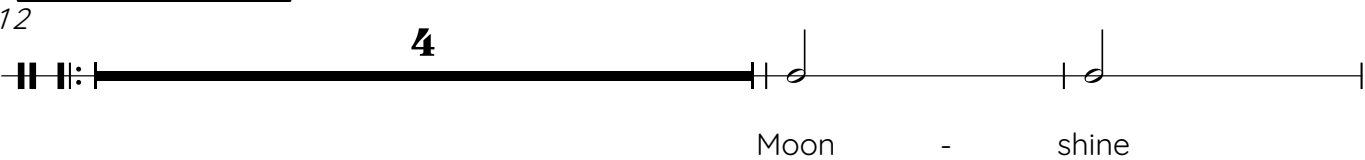
Keep repeating

11



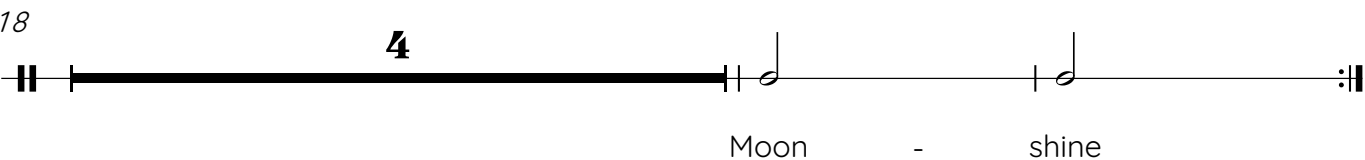
Section 3: Moonshine

12



Moon - shine

18



Moon - shine

3. Magic

Judith Weir
arr. Ellen O'Brien

♩=66

Section 1: Elves

2/4

pp

5

pp

Repeat ad lib.

9

Section 2: Magic Spell

10 Play when you choose

Keep repeating

11

Keep repeating

Section 3: Moonshine

12

4

Moon - shine

18

4

Moon - shine

3. Magic

Judith Weir
arr. Ellen O'Brien

♩=66

Section 1: Elves

2/4

pp

5

pp

Repeat ad lib.

9

Section 2: Magic Spell

10 Play when you choose

11

Section 3: Moonshine

12

4

Moon - shine

18

4

Moon - shine

3. Magic

Piano (Optional)

Judith Weir
arr. Ellen O'Brien

♩=66

Section 1: Elves

pp

pp

5

pp

Repeat ad lib.

Repeat ad lib.

9

Section 2: Magic Spell

tr

10

Keep repeating

11

tr

12

Section 3: Moonshine

Moon - shine

18

Moon - shine