

Beginner Bass

SINFONIA in C MAJOR

BBC Ten Pieces Beginner

Marianna Martines
arr. Sarah Freestone

A Allegro con spirito

Open Strings

7

12

Musical notation for the bass line of 'The Rose Tree'. The notation is on a single staff with a bass clef. It consists of four measures. The first measure contains two eighth notes (G2, A2) and two eighth notes (B1, A2). The second measure contains two eighth notes (G2, A2) and two eighth notes (B1, A2). The third measure contains four eighth notes (G2, A2, B1, A2). The fourth measure contains a quarter note (G2), a quarter rest, and a half note (G2) with a fermata.

16 **B**

22

The bass line is written on a single staff in bass clef. It consists of six measures. The first measure contains four eighth notes: G2, F2, E2, and D2. The second measure contains four eighth notes: D2, C2, B1, and A1. The third measure contains four eighth notes: A1, G1, F1, and E1. The fourth measure contains four eighth notes: E1, D1, C1, and B0. The fifth measure contains four eighth notes: B0, A0, G0, and F0. The sixth measure contains four eighth notes: F0, E0, D0, and C0. The piece ends with a double bar line. A dynamic marking of *f* (forte) is placed below the fourth measure. A fermata is placed over the final note, C0.

28

pizz

The first staff of the musical score is written in bass clef. It begins with a mezzo-piano (*mp*) dynamic marking. The notation consists of a series of eighth notes, some of which are beamed together, creating a rhythmic pattern across the staff.

34

arco

40

The musical notation for Example 6-10 is written on a single bass staff. It consists of five measures. The first measure contains a dotted quarter note G₂, followed by two eighth rests. The second measure contains a dotted half note F₂. The third measure contains a dotted quarter note E₂, followed by two eighth rests. The fourth measure contains a dotted quarter note D₂, followed by two eighth rests. The fifth measure contains a dotted quarter note C₂, followed by two eighth rests.

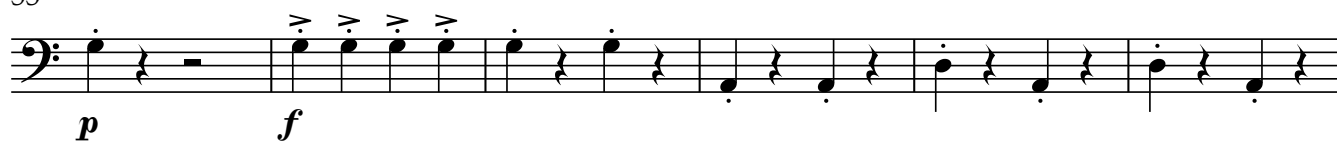
45

The bass line of 'The Rose Tree' is written in bass clef. It consists of four measures. The first measure starts with a piano (*p*) dynamic and contains a dotted quarter note G2, an eighth rest, a dotted quarter note F2, and an eighth rest. The second measure contains a dotted quarter note E2, an eighth rest, and a whole rest. The third measure contains a dotted quarter note D2, an eighth rest, a dotted quarter note C2, and an eighth rest. The fourth measure starts with a forte (*f*) dynamic and contains a dotted quarter note B1, an eighth rest, a dotted quarter note A1, an eighth rest, a dotted quarter note G1, an eighth rest, a dotted quarter note F1, an eighth rest, a dotted quarter note E1, an eighth rest, and a whole note D1 with a fermata.

49 D

V.S.

55



61 1 on A!

0

1 on A

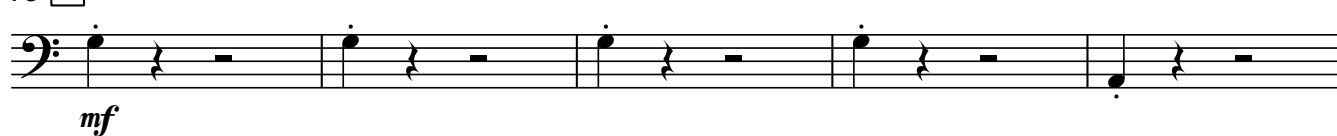


67

1 on A



73 [E]



78



82

0



86

[F] pizz



91

arco



97



103

