

Marianne von Martinez - Overture ('Sinfonie') in C major - Allegro con spirito

Which very famous composer lived in the same building as her?

Haydn

Complete the clues below to identify the instruments in this orchestra.

the String family	the Woodwind family	the Keyboard family
1 st Violin	Oboe	Harpsichord
2 nd Violin	the Brass family	
Viola	French Horn	
Cello		
Double Bass		

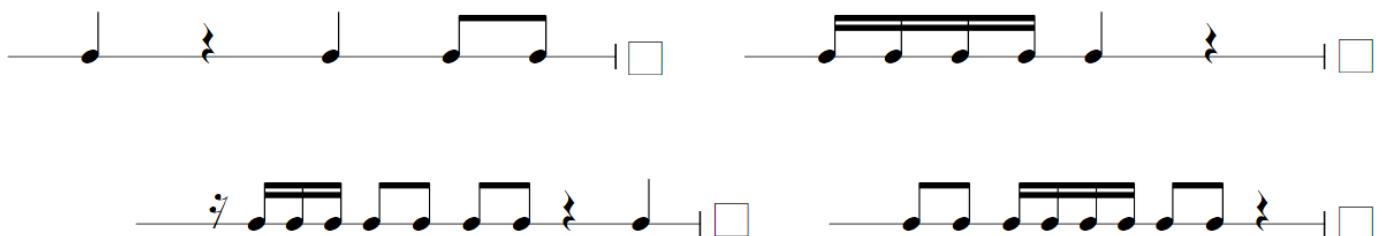
Complete each sentence to explain how Martínez creates contrast in the music.

1. The tonality changes from *major* to *minor*, creating a contrasting mood.
2. The dynamics quickly change from *piano* to *forte*, adding excitement to the music.
3. Martínez uses both *legato* and *staccato* articulation in the music to create interest.
4. The texture is sometimes *sparse*, and sometimes more *dense*, adding to the contrast.

Put a tick next to the bars that have four beats, and put a cross next to the bars that don't have four beats:

1. four beats
2. three beats
3. five beats
4. four beats

(first and last images should be ticked)


Symphony in C – puzzle

This symphony is marked allegro con spirito: fast, with spirit