

Piano

GRASSWALK

BBC Ten Pieces
Beginner

Laura Shighihara
arr. Emily Pedersen

♩ = 108

Measures 1-6 of the piece. The music is in 4/4 time. The right hand plays a simple melody of quarter notes, while the left hand provides a harmonic accompaniment with dotted half notes and quarter notes. Dynamics include piano (*p*), mezzo-forte (*mf*), and piano (*p*).

Measures 7-12. The melody continues with some eighth-note patterns. A crescendo leads to a forte (*f*) dynamic in measure 12.

Measures 13-16. The right hand features a more active melody with eighth notes and a key signature change to one sharp (F#). The left hand continues with a steady accompaniment. Dynamics include piano (*p*) and mezzo-piano (*mp*).

Measures 17-20, marked with a repeat sign and a first ending bracket labeled 'A'. The melody is more complex, involving sixteenth-note patterns. The dynamic is mezzo-forte (*mf*).

Measures 21-23. The melody continues with eighth-note patterns. The left hand provides a consistent accompaniment.

Measures 24-27. The piece concludes with a final melody in the right hand and a sustained accompaniment in the left hand. The dynamic is mezzo-forte (*mf*).

V.S.

29 B

7

C

8^{va}-1

f

6

7

6

44 D

mp

48

52 E

p

mf

p

mf

58

mf

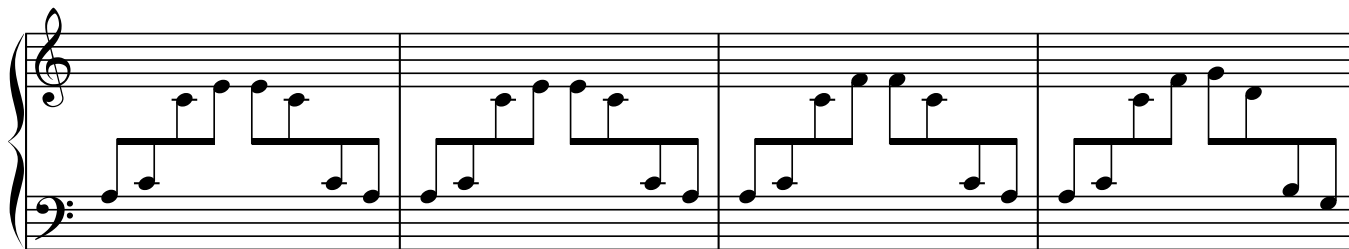
6

6

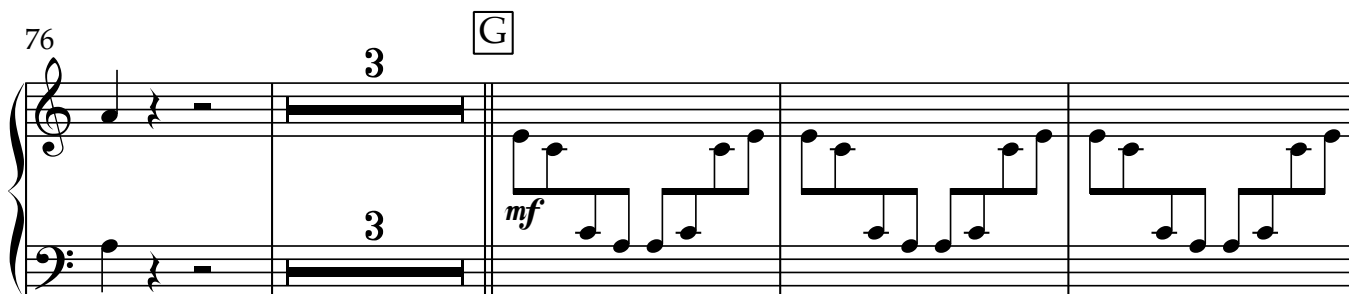
68 F

f

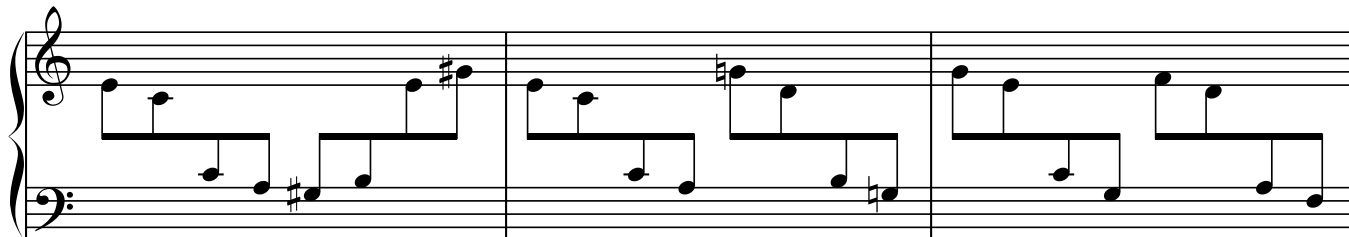
72



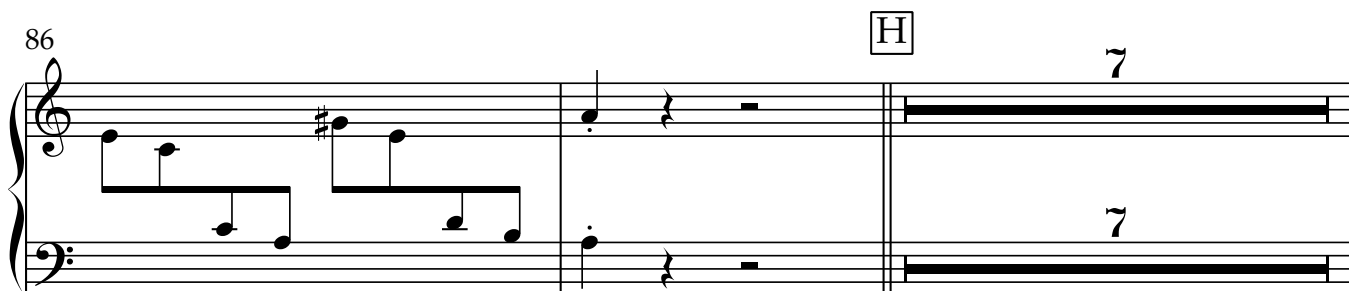
76



83



86



95 I

Measures 95-98 of a piano score. The music is in treble and bass clefs. The right hand plays a sequence of eighth notes, and the left hand plays a sequence of quarter notes. The dynamic marking *mf* is present in the first measure.

99

Measures 99-101 of a piano score. The music continues with the same rhythmic pattern as the previous system, featuring eighth notes in the right hand and quarter notes in the left hand.

102

Measures 102-105 of a piano score. The music features glissandos (gliss.) and dynamic markings *f* and *ff*. The right hand plays a sequence of notes, and the left hand plays a sequence of notes. The dynamic marking *f* is present in the first measure, and *ff* is present in the third measure. The right hand has an *8va* marking above the first measure.