

Enigma Variations - Theme

Edward Elgar
arr. Iain Farrington

Andante (♩ = c.63)

Measures 1-4 of the Enigma Variations Theme. The music is in 4/4 time, key of B-flat major. The right hand features a melodic line with a half note, quarter note, eighth note, and quarter note pattern. The left hand provides a harmonic accompaniment with chords and single notes. Dynamics include *p molto espress.* and *pp*.

Measures 5-8 of the Enigma Variations Theme. The right hand continues the melodic line with a half note, quarter note, eighth note, and quarter note pattern. The left hand provides a harmonic accompaniment with chords and single notes. Dynamics include *cresc.*, *dim.*, and *p*.

Measures 9-12 of the Enigma Variations Theme. The right hand continues the melodic line with a half note, quarter note, eighth note, and quarter note pattern. The left hand provides a harmonic accompaniment with chords and single notes. Dynamics include *pp* and *cresc.*. A box labeled 'A' is placed above measure 10.

Measures 13-16 of the Enigma Variations Theme. The right hand continues the melodic line with a half note, quarter note, eighth note, and quarter note pattern. The left hand provides a harmonic accompaniment with chords and single notes. Dynamics include *mf*, *pp*, and *dim.*. The piece concludes with a double bar line.

Variation 6 - Ysobel

Andantino (♩ = c.52)

Measures 1-4 of the piece. The music is in 3/4 time. Measure 1 starts with a piano (*p*) dynamic. The right hand plays a melody with eighth and quarter notes, while the left hand provides a harmonic accompaniment with chords and single notes.

Measures 5-8, marked with a section label **A** in a box. The melody continues with more complex rhythmic patterns, including sixteenth notes in the right hand.

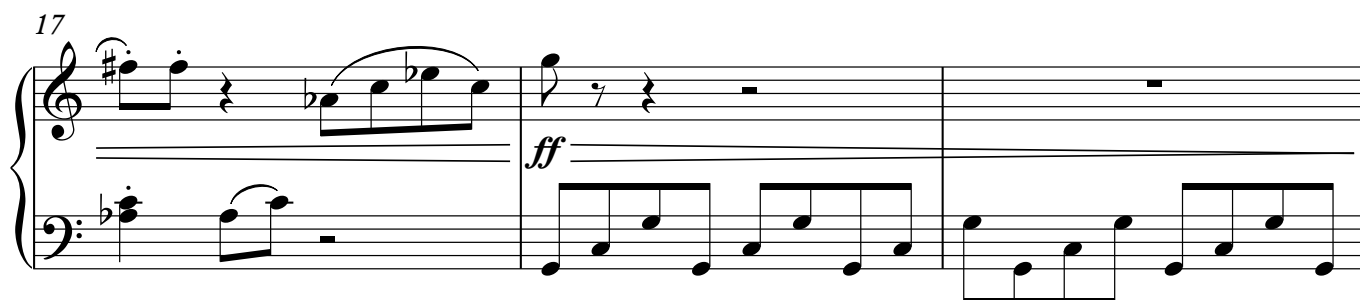
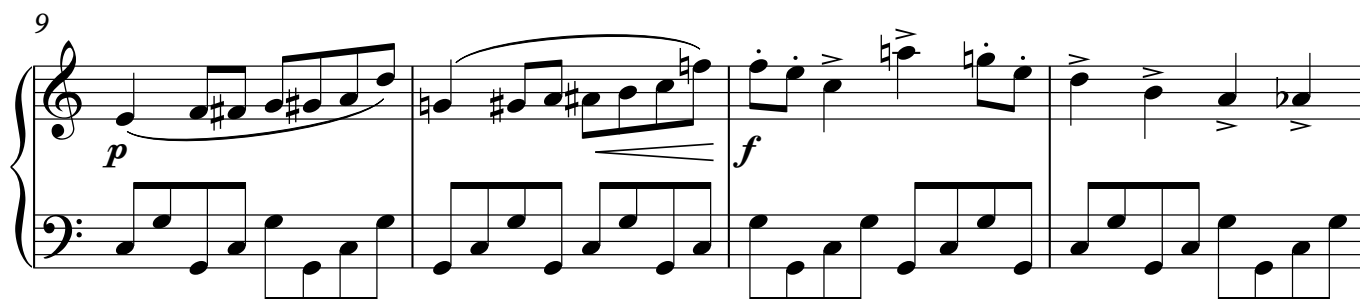
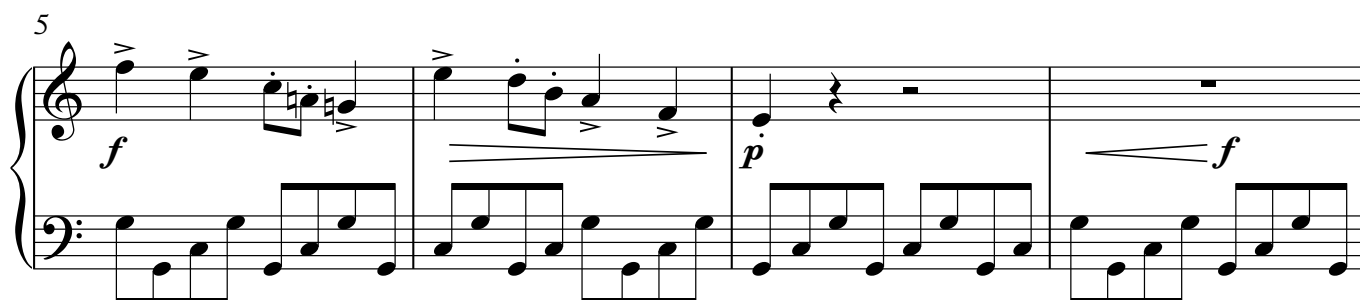
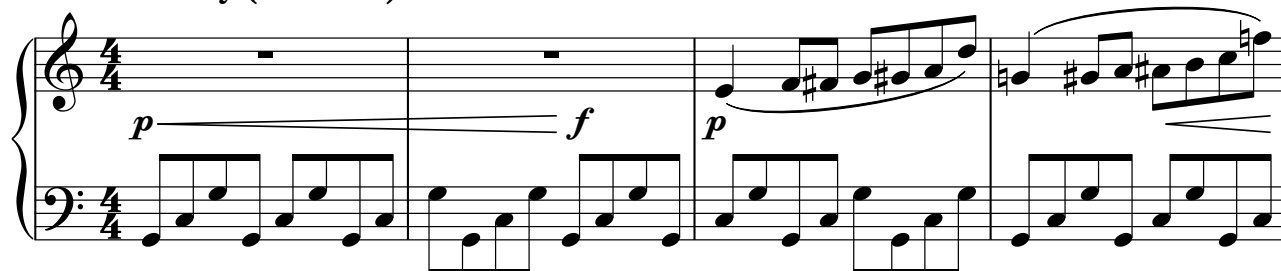
Measures 9-13, marked with a section label **B** in a box. The music features a piano (*p*) dynamic. The right hand has a more active melody with eighth notes, and the left hand continues with a steady accompaniment.

Measures 14-17, marked with a section label **C** in a box. The music becomes more intense, marked with a forte (*f*) dynamic. The right hand plays a rapid, flowing melody with many sixteenth notes.

Measures 18-21, marked with a *rit.* (ritardando) instruction. The music slows down. The right hand has a melody with long notes and rests, while the left hand provides a simple harmonic support. The piece ends with a final chord in measure 21.

Variation 7 (Troyte)

Lively (♩ = c.132)



20 **B**

Measures 20-23 of section B. The piece is in 2/4 time. The right hand features a melodic line with a half-note pickup at measure 20, followed by eighth-note runs and a crescendo leading to a fortissimo (f) section starting at measure 22. The left hand provides a steady eighth-note accompaniment. Dynamic markings include piano (p) at measure 20 and fortissimo (f) at measure 22.

24

Measures 24-27. The right hand continues the melodic pattern with eighth-note runs and a crescendo leading to a fortissimo (f) section starting at measure 25. The left hand maintains the eighth-note accompaniment. Dynamic markings include piano (p) at measure 24 and fortissimo (f) at measure 25.

28 **C**

Measures 28-31 of section C. The right hand has whole-note chords with a half-note pickup at measure 28. The left hand has a rhythmic pattern of eighth notes and rests. A piano (p) dynamic marking appears at measure 30 for the right hand's final notes.

32

Measures 32-35. The right hand features a melodic line with a half-note pickup at measure 32, followed by eighth-note runs and a crescendo leading to a fortissimo (ff) section starting at measure 33. The left hand provides a steady eighth-note accompaniment. Dynamic markings include fortissimo (ff) at measure 33.

Variation 11 (G.R.S.)

Allegro (♩ = c.132)

Measures 1-4 of Variation 11. The piece is in 4/4 time with a key signature of two flats (B-flat and E-flat). Measure 1 features a forte (*f*) melody in the right hand and a whole rest in the left hand. Measures 2 and 3 have a piano (*p*) melody in the left hand and whole rests in the right hand. Measure 4 returns to a forte (*f*) melody in the right hand with a whole rest in the left hand.

Measures 5-8 of Variation 11. Measure 5 begins with a fortissimo (*ff*) melody in the left hand and a whole rest in the right hand. Measure 6 features a forte (*f*) melody in the right hand and a whole rest in the left hand. Measures 7 and 8 have a piano (*p*) melody in the left hand and whole rests in the right hand. A box labeled 'A' is placed above measure 6.

Measures 9-13 of Variation 11. Measures 9-13 consist of a continuous eighth-note melody in the right hand, while the left hand plays whole notes. The melody in the right hand includes various intervals and rests, creating a rhythmic pattern.

Measures 14-18 of Variation 11. Measure 14 begins with a piano (*p*) melody in the left hand and a whole rest in the right hand. Measures 15-18 feature a piano (*p*) melody in the left hand and whole rests in the right hand. A box labeled 'B' is placed above measure 14.

Measures 19-23 of Variation 11. Measures 19-23 consist of a continuous eighth-note melody in the left hand, while the right hand plays whole notes. The melody in the left hand includes various intervals and rests, creating a rhythmic pattern.

25 **C**

f *p* *f*

29

p

34 **D**

p

38

p