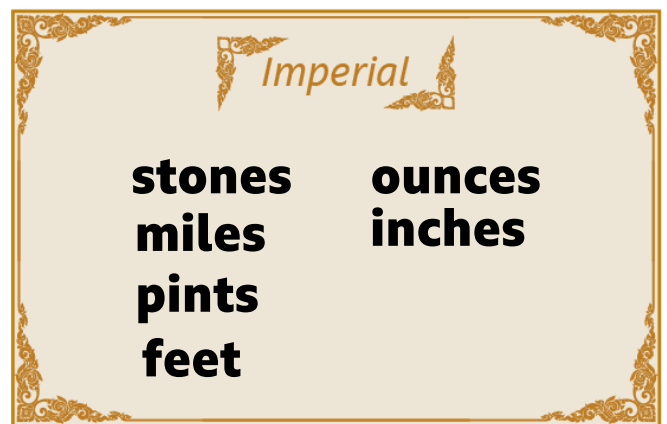
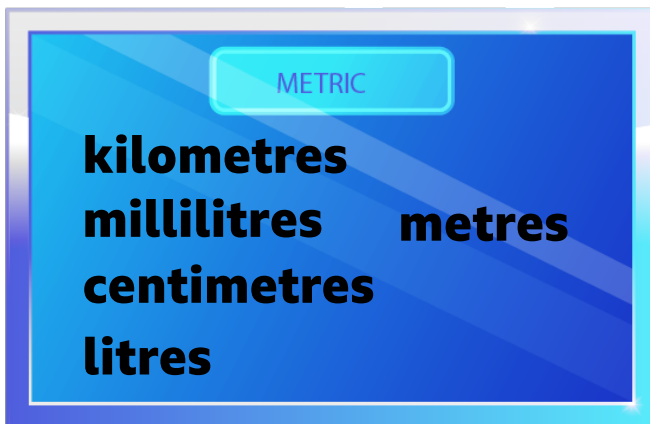
**Episode 1: Measuring area:**Shape 1 = 9cm^2 Shape 2 = 18cm^2 ($36 \div 2$)Shape 3 = 39cm^2 Shape 4 = 34cm^2 ($28 + 6$)Shape 5 = $5\frac{1}{2}\text{cm}^2$ (approx.)**Episode 2: Perimeter**

Shape 1 = 80cm

Shape 2 = 200cm

Shape 3 = 280cm

Shape 4 = 220cm

Episode 3: Volume1. 1m^3 2. 4m^3 3. 24m^3 4. 60m^3 **Episode 4: Metric and imperial measurements****Episode 5: Types of angles**

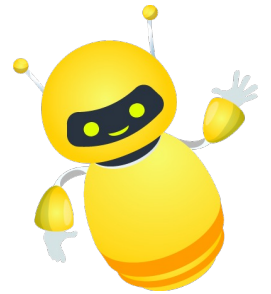
Angle 1 = obtuse angle

Angle 2 = reflex angle

Angle 3 = acute angle

Angle 4 = right angle

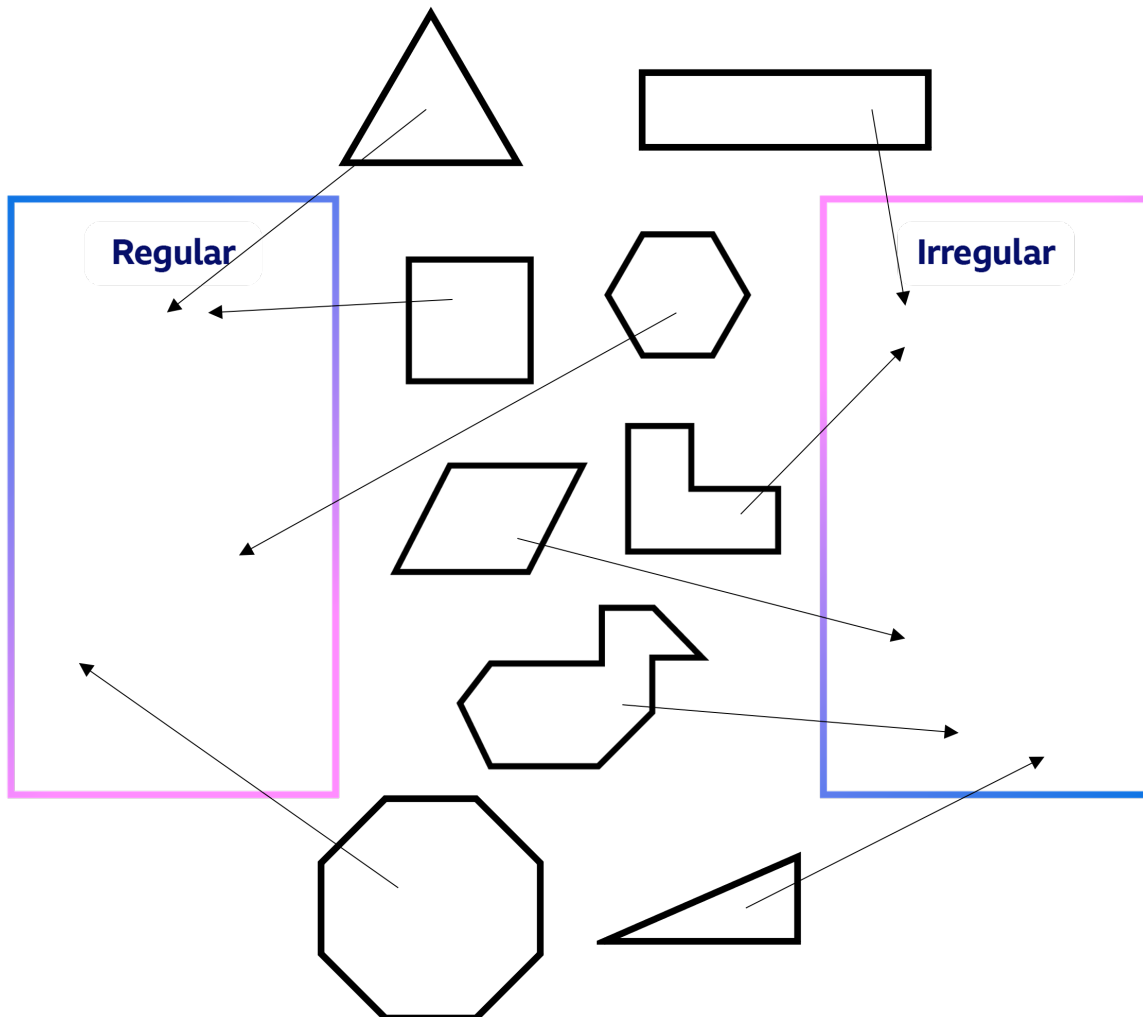
Episode 6: calculating missing anglesAngle 1 = 140° Angle 2 = 56° Angle 3 = 167° Angle 4 = 48°

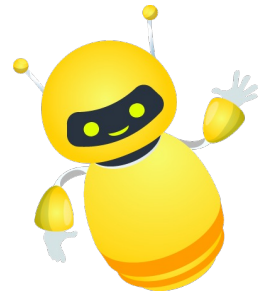


Episode 7: Missing lengths and angles

- Length a = 3cm
- Length b = 6cm
- Perimeter = 28cm
- Angle c = 270°
- Angle d = 90°
- Angle e = 20°

Episode 8: Polygons sorting





KS2 Maths: Answers

Episode 9: Coordinates on a grid

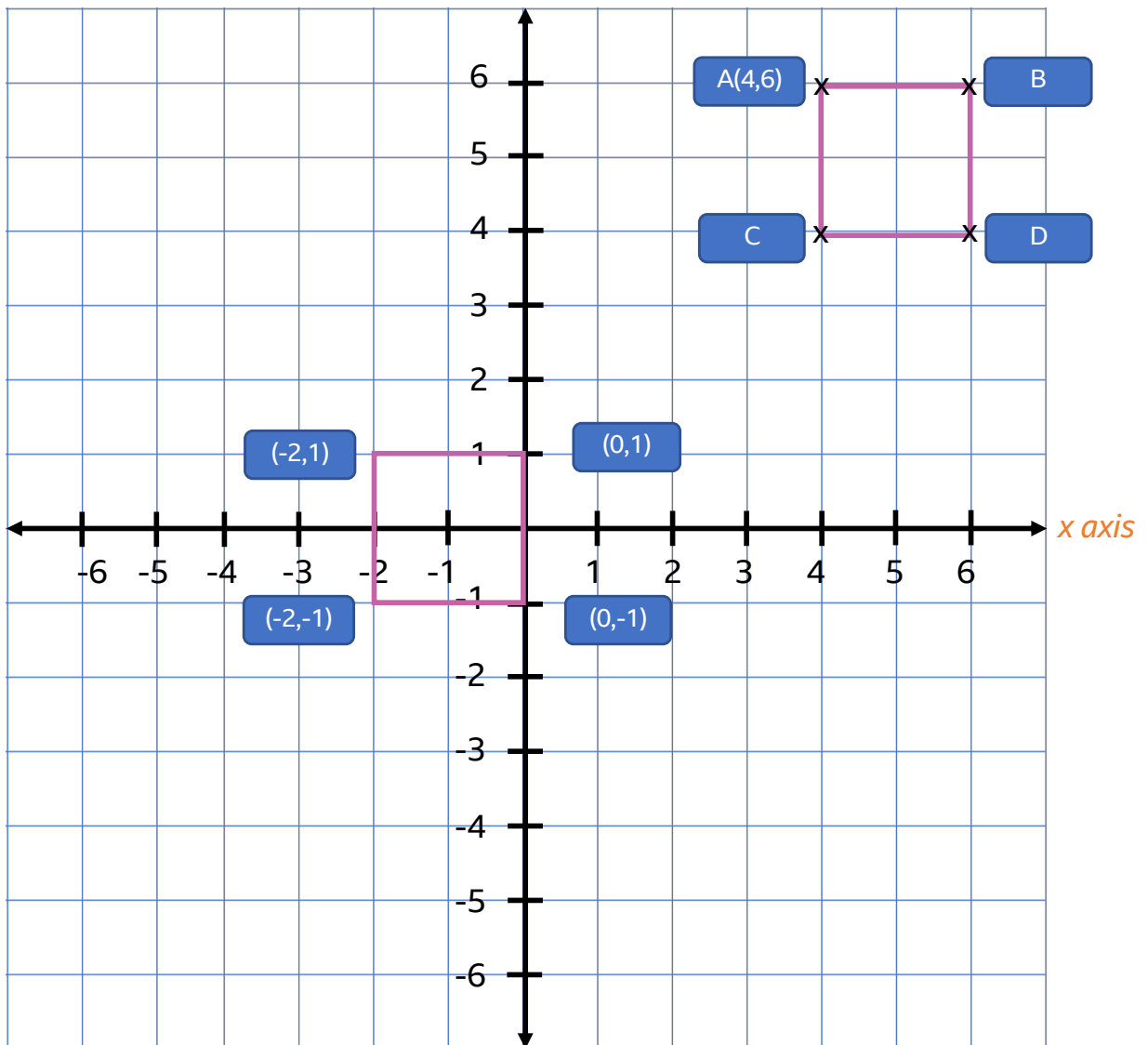
1. 1. Write down the coordinates for the remaining points on the shape:

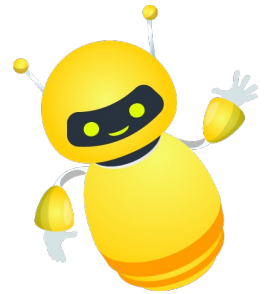
B(6,6)

C(4,4)

D(6,4)

2. . Translate (or move) the shape 5 points down and six points left.



**Episode 10: Units of time**

1. **4 minutes and 12 seconds** = 252 seconds

2. **600 seconds** = 10 minutes

3. **5 hours and 37 minutes** = 337 minutes

4. **240 minutes** = 4 hours

5. **3 days and 1 hour** = 73 hours

6. **144 hours** = 6 days

7. **6 weeks and 3 days** = 45 days

8. **63 days** = 9 weeks

9. **2 years and 3 weeks** = 107 weeks

10. **Kayla** finishes a race in **4 minutes** and **Zack** finishes in **245 seconds**.

Who finishes first: **Kayla** or **Zack**? (*circle the correct answer*)

4 minutes = 240 seconds