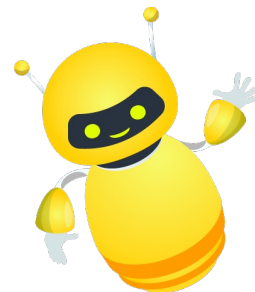


KS2 Maths: Coordinates on a grid



On the shape below, the coordinates of point A are (4,6).

This can be written as **A(4,6)**

1. Write down the coordinates for the remaining points on the shape:

B(,)

C(,)

D(,)

2. Translate (or move) the shape 5 points down and six points left.

Draw the translated shape on the grid.

