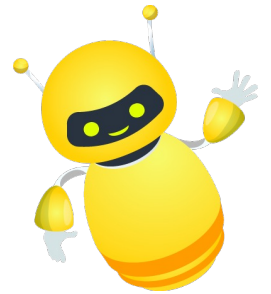


KS2 Maths: Missing lengths and angles



Work out the missing values on the shapes below.

Hints:

Full turn = 360°

Right angle = 90°

Angles in a triangle = 180°

1cm

1cm

3cm

a

3cm

c

8cm

5cm

d

b

Length **a** =

Length **b** =

Perimeter =

Angle **c** =

Angle **d** =

Angle **e** =

70°

e