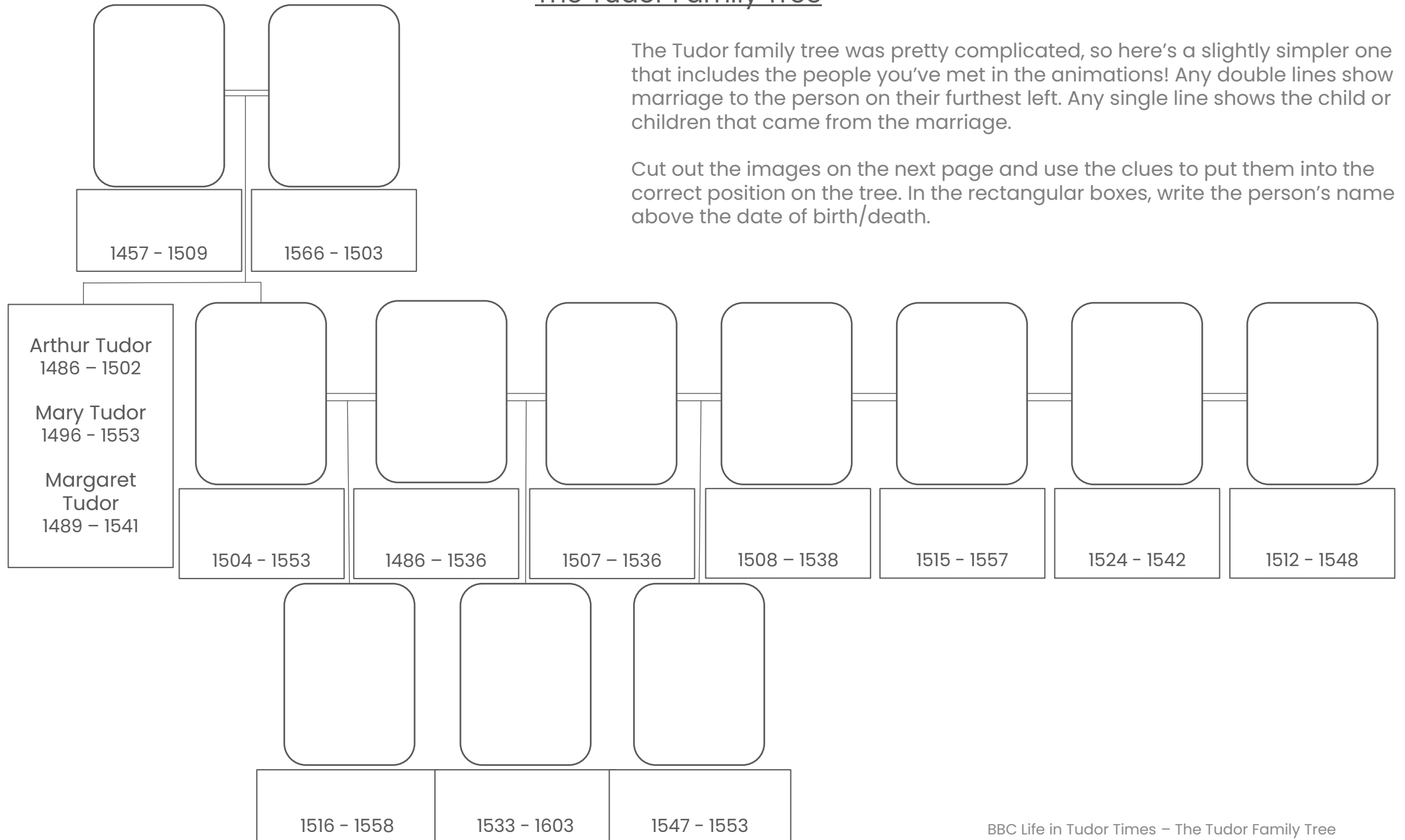


The Tudor Family Tree

The Tudor family tree was pretty complicated, so here's a slightly simpler one that includes the people you've met in the animations! Any double lines show marriage to the person on their furthest left. Any single line shows the child or children that came from the marriage.

Cut out the images on the next page and use the clues to put them into the correct position on the tree. In the rectangular boxes, write the person's name above the date of birth/death.



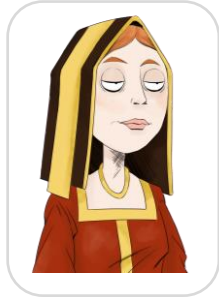
The Tudor Family Tree



King Edward VI

Son of Henry VIII
and Jane Seymour

Lived 1537 – 1553



Elizabeth of York

Married Henry VII

1466 – 1503



King Henry VIII

Had six wives

1491 – 1547



Queen 'Bloody' Mary I

Daughter of Henry VIII
and Catherine of
Aragon
1516 – 1558



Catherine of Aragon

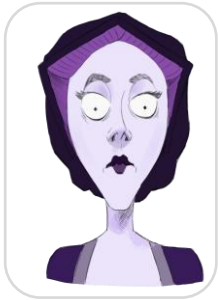
Henry VIII's 1st wife.
Mother of Queen
Mary I
1485 – 1536



Catherine Parr

Henry VIII's 6th wife

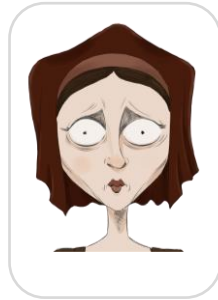
1512 – 1548



Jane Seymour

Henry VIII's 3rd
wife

1508 – 1537



Anne of Cleves

Henry VIII's 4th
wife

1515 – 1557



Anne Boleyn

Henry VIII's 2nd
wife

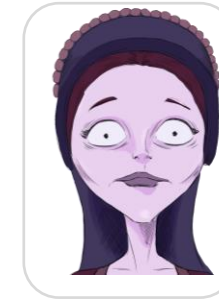
1507 – 1536



King Henry VII

Started Tudor
reign of England

1457 – 1509



Catherine Howard

Henry VIII's 5th
wife

1524 – 1542



Queen Elizabeth I

Daughter of
Henry VIII and
Anne Boleyn
1533 – 1603

The Tudor Family Tree

The Tudor family tree was pretty complicated, so here's a slightly simpler one that includes the people you've met in the animations! Any double lines show marriage to the person on their furthest left. Any single line shows the child or children that came from the marriage.

Cut out the images on the next page and use the clues to put them into the correct position on the tree. In the rectangular boxes, write the person's name above the date of birth/death.

