

Honesty is the best policy... or is it?

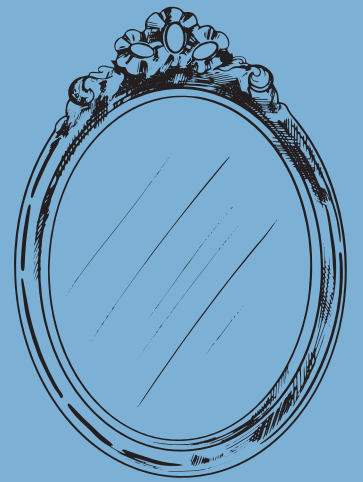
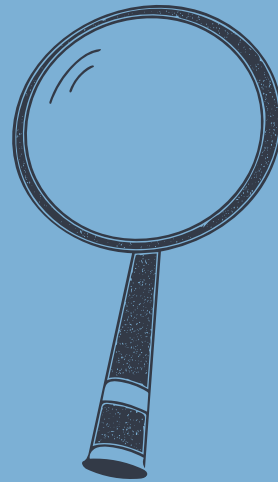
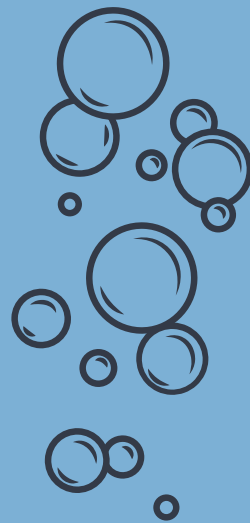
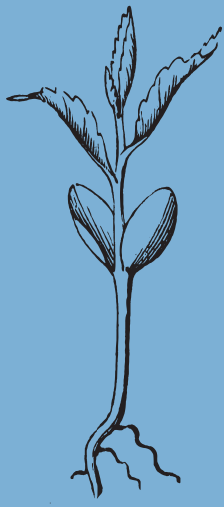
A philosophical enquiry about honesty,
written by Grace Lockrobin

We are SAPERE

We improve learning and lives
through philosophical enquiry

We give people the skills to thrive in school and society

Elements of SAPERE P4C



S

Share

A

Ask

P

Pick

E

Explore

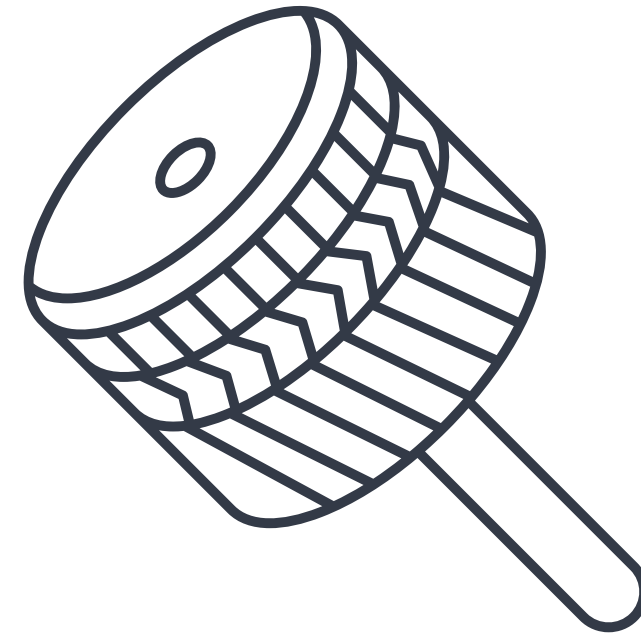
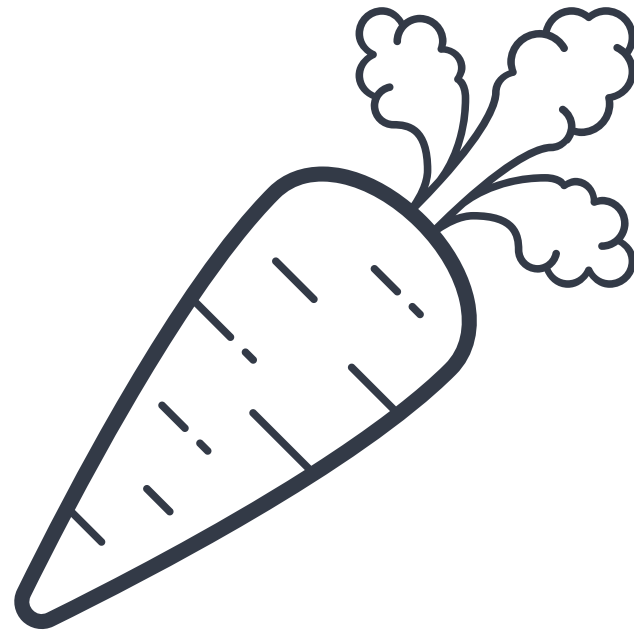
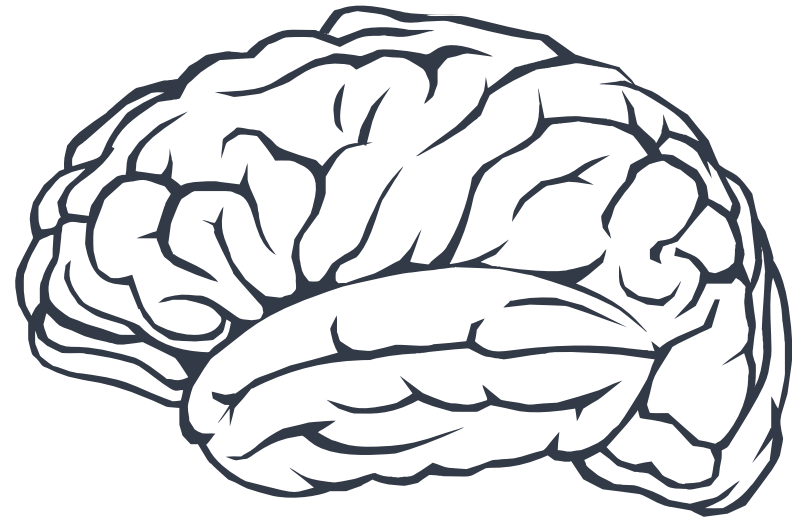
R

Refine

E

Evaluate

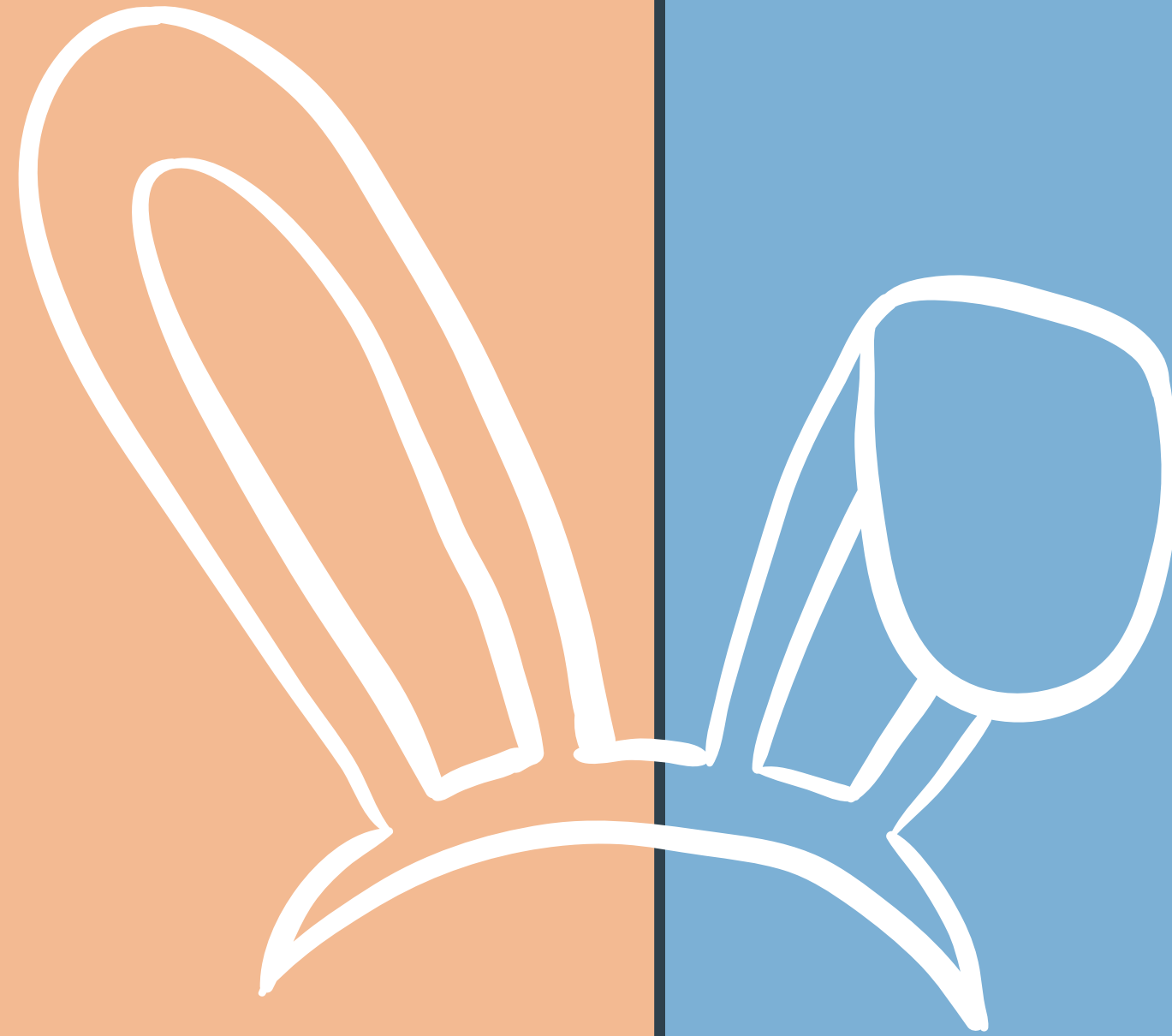
Ethos





Do these ears look good on me?

Would you
rather...



...be told a painful truth

OR

... a comforting lie

?

Rabbit Sitting

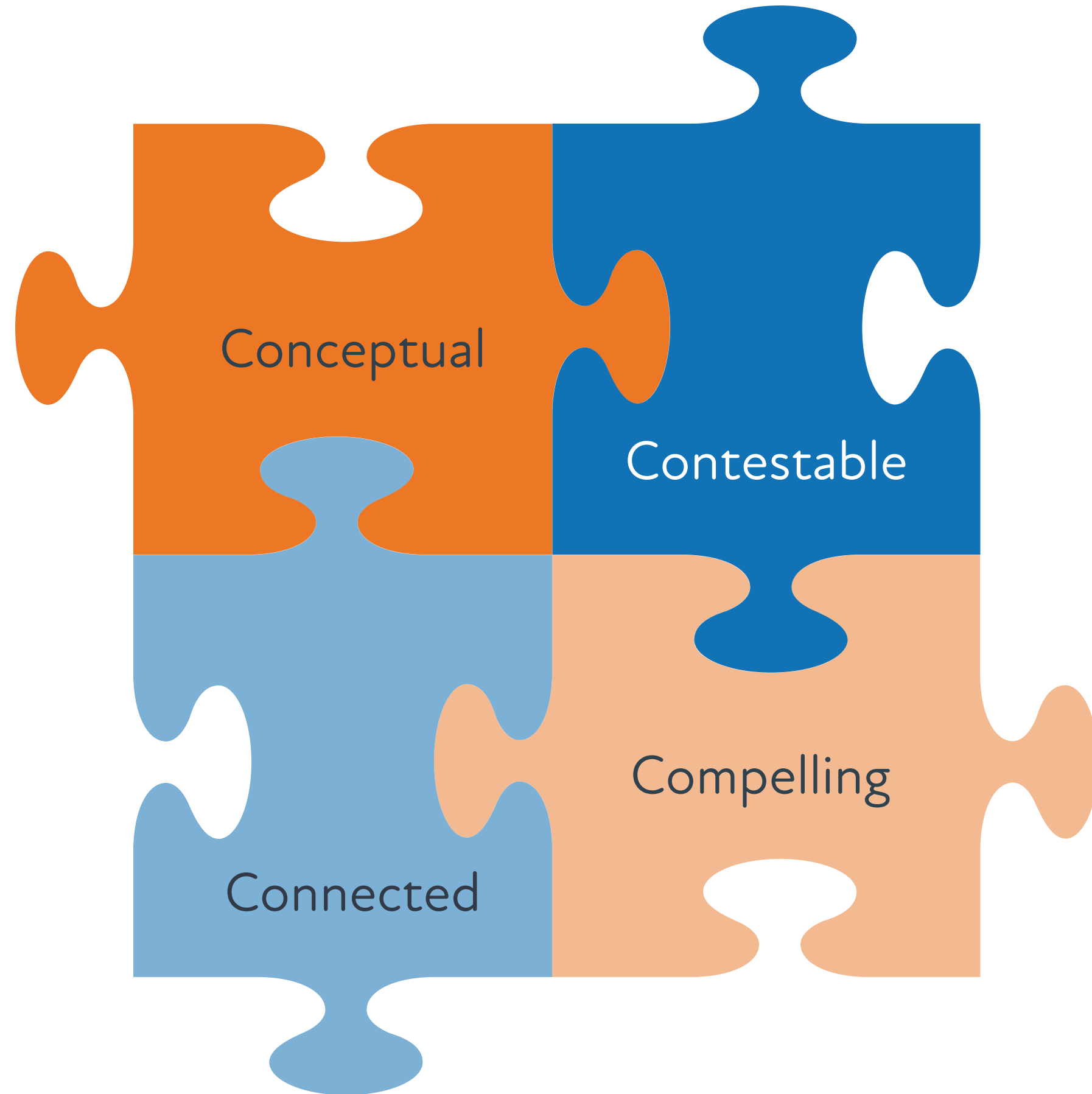
Your friend Sunita is going away on holiday and she asks you to look after her beloved bunny Bernard.

She calls from Spain to check on Bernard on Monday and you reassure them he is as blissful as any bunny might be.

But on Tuesday you awake to terrible news. Bernard has escaped from his hutch and there is no sign of him in your garden. Then on Tuesday evening the phone rings, it's Sunita!

What do you do?





4Cs Questions

What we philosophise about

Review

Share

Share expectations and share a stimulus. e.g. Rabbit-sitting

Ask

Ask the students a quick question e.g. 'What should you do?' then invite them to ask *their own* questions.

Pick

Pick a puzzling philosophical problem making that the focus e.g. 'Is it sometimes bad to be honest?'

Explore

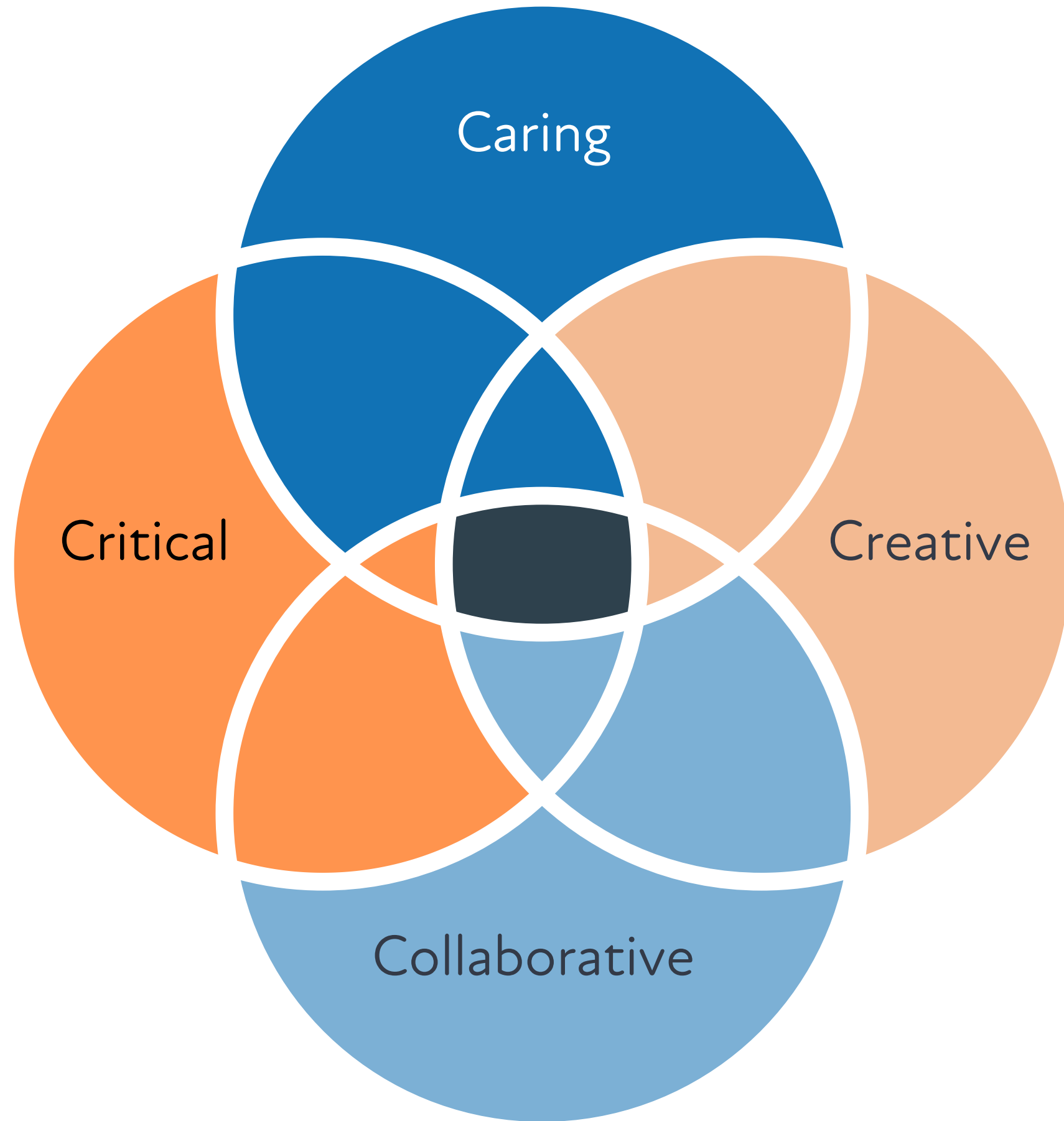
Explore a range of responses e.g. examples of painful truths

Refine

Focus on an emerging contestable claim giving reasons to deepen the enquiry, e.g. 'lies can be kind'

Evaluate

Evaluate the enquiry and think about our thinking. e.g. Did your thinking change today? If so, why?



4Cs Method

How we philosophise

A framework for oracy

Critical

questioning, reasoning,
evaluating, weighing evidence,
making distinctions, testing
ideas, applying criteria

Creative

imagining, connecting, giving
examples, defining, explaining,
suggesting alternatives,
considering other possibilities

Caring

actively listening, appreciating
others, thanking people,
showing interest, being
sensitive, waiting your turn

Collaborative

joining in, responding, building
on ideas, sharing, negotiating,
exploring other's perspectives,
inviting people to contribute



SAPEREP c/o Menzies LLP Heathrow
Centrum House, 36 Station Road
Egham, Surrey, TW20 9LF

+44 (0) 1784 906899 

www.sapere.org.uk 

enquiries@sapere.org.uk 

facebook.com/SAPEREP4C 

instagram.com/saperep4c 

twitter.com/SAPEREP4C 

saperep4c.bsky.social 

linkedin.com/company/sapere 

youtube.com/@saperep4c 