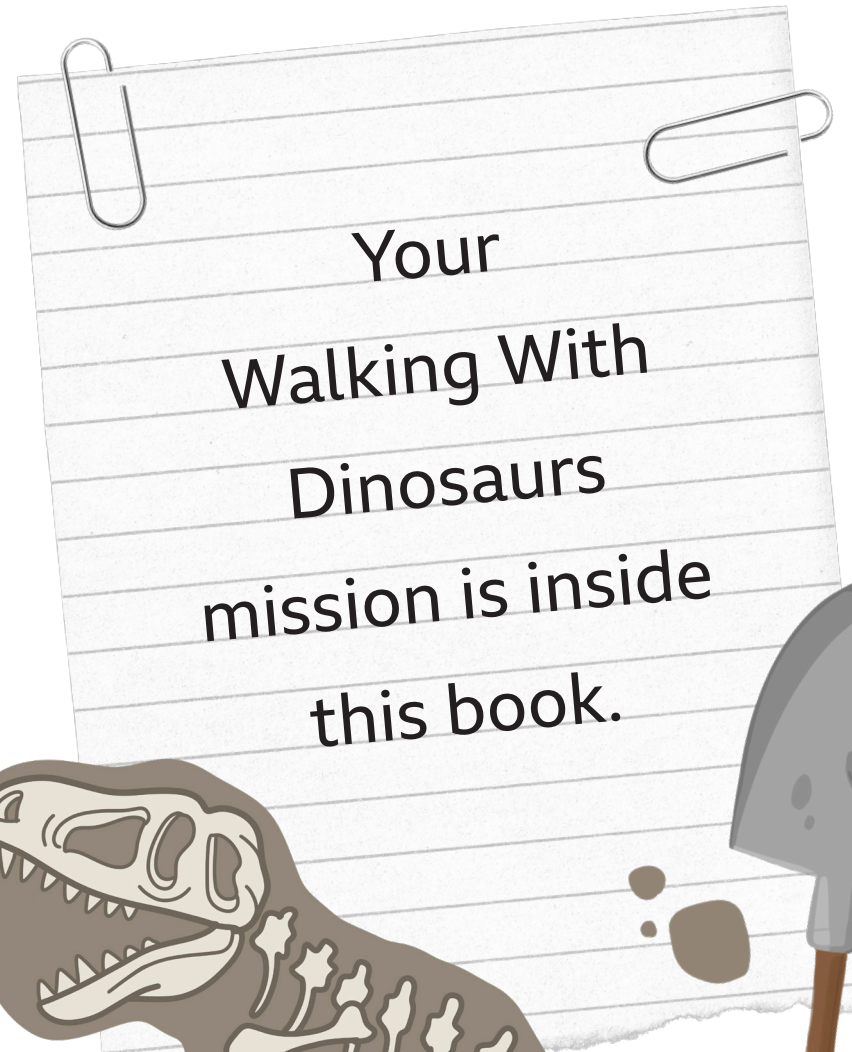
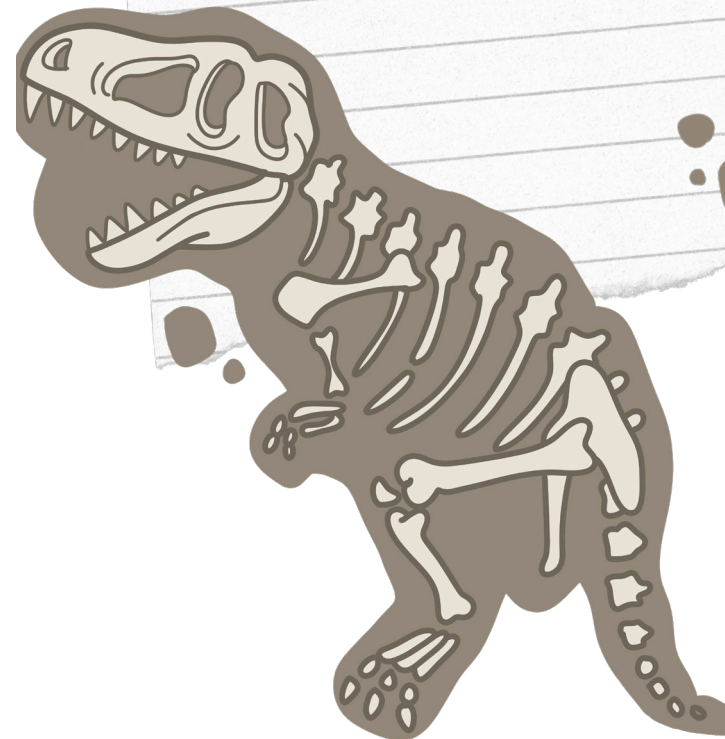
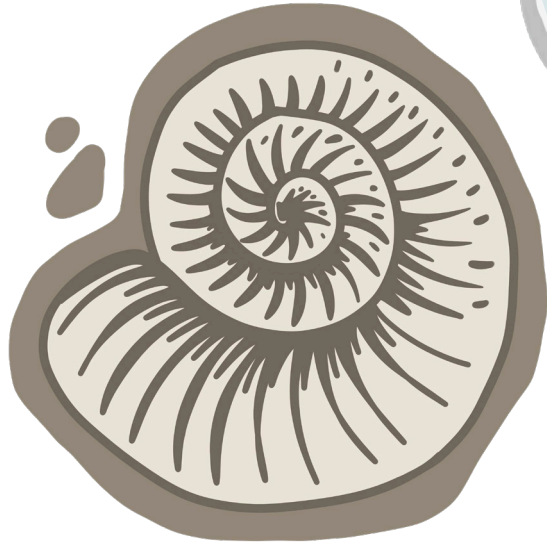
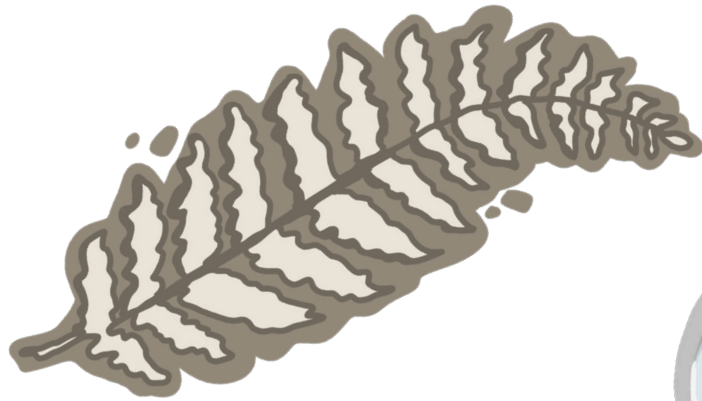


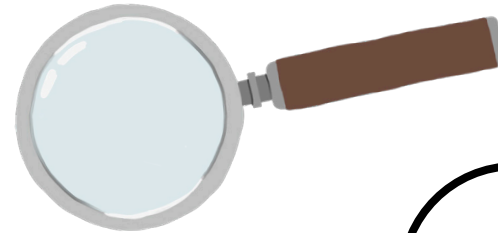
BBC
LIVE
LESSONS



MISSION

Name the mystery dinosaur.

Note down clues here.



☐ T. rex



☐ Gastonia



☐ Utahraptor



☐ Lusotitan



☐ Spinosaurus



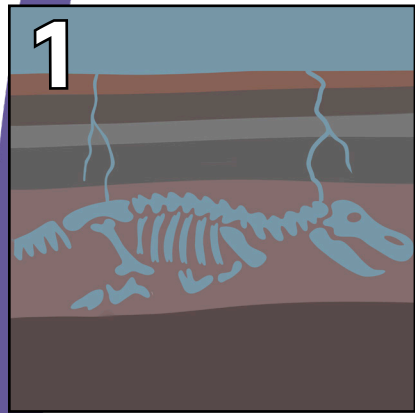
☐ Edmontosaurus

A large empty rounded rectangle box for writing clues.

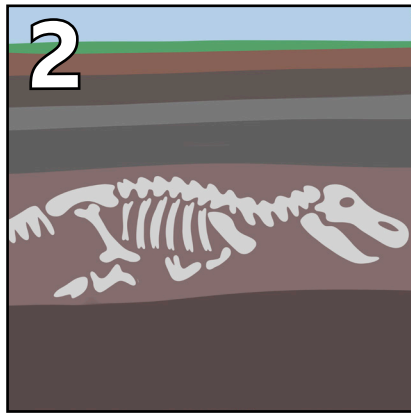
Put the pictures in the right order.

CHALLENGE

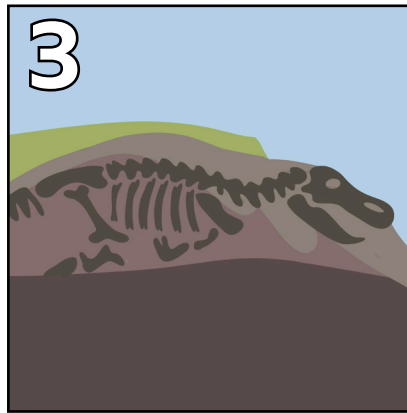
1



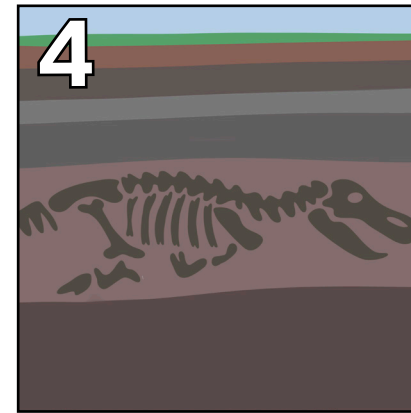
Water breaks down bones, leaving an empty shape in the rock.



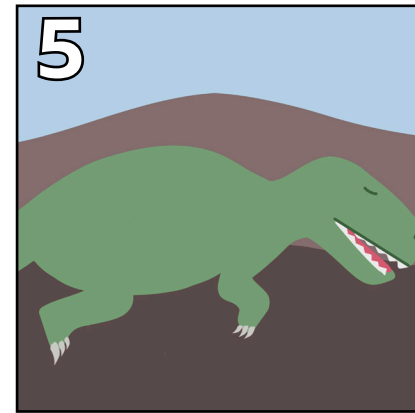
More sand or mud piles up, pressing down until it turns to rock.



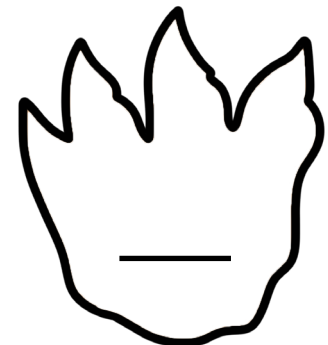
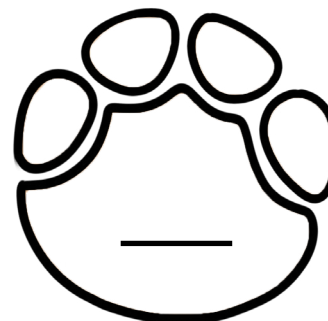
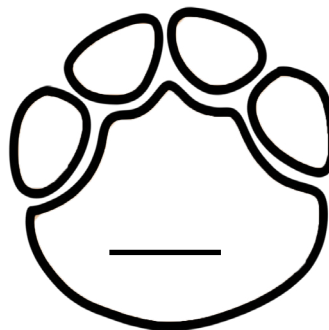
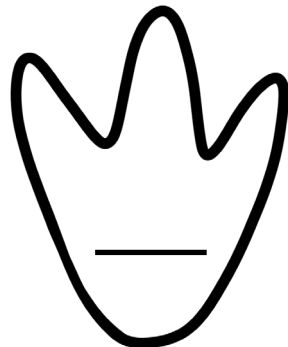
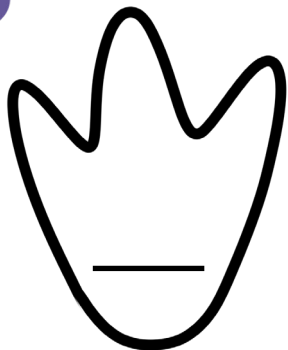
Earth wears away to show the fossil



Water leaves minerals like salt behind. They fill the shape and turn to rock.



Dinosaur dies. Sand or mud quickly covers it. Its soft parts rot away.

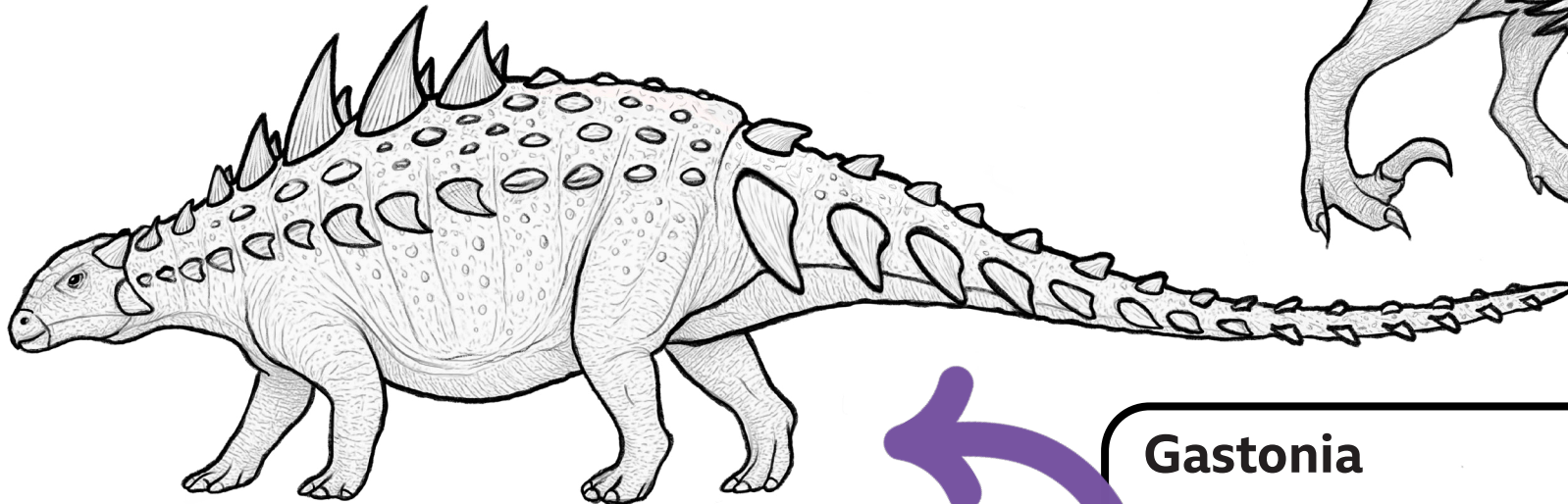
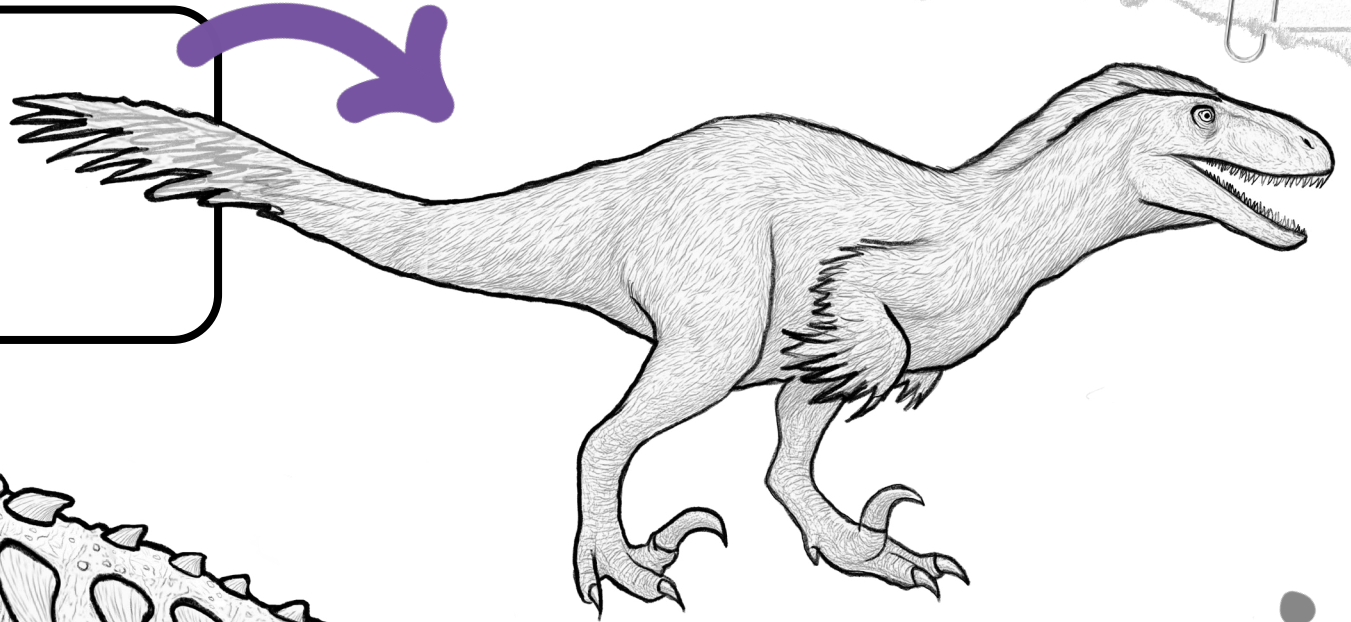


CHALLENGE

2

What adaptations did these dinosaurs have to help them live their lives?

Utahraptor



Gastonia

Circle or note the things you spot.