

Creatures and Colour



Camouflage

Match each camouflaged animal to its predator by drawing a line between them. Then, identify and write down each animal's habitat. (Top tip: think about the type of habitat as well as where it is in the world.)

Predator

Camouflaged Animal

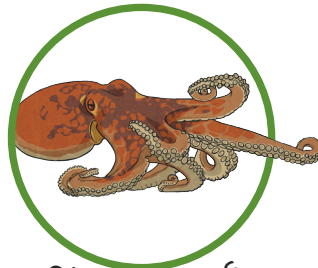
Habitat

owls and raccoons



Arctic hare

snakes and birds



giant octopus

seals and sharks



panther chameleon

foxes and wolves



barred owl

Habitats and Adaptation

Animals camouflage themselves in order to hide away from their predators or in some cases to sneak up on their prey.

A habitat is the place where an animal lives. What colour and camouflage adaptations does each animal below have to survive or thrive in its habitat?



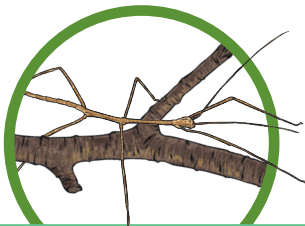
tiger in long grass



Gaboon viper on the forest floor



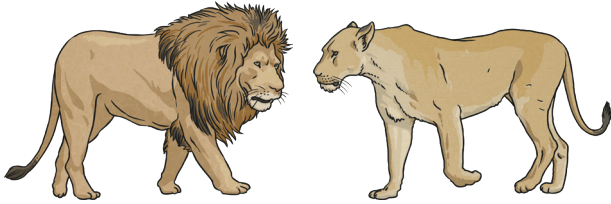
penguin in the Southern Ocean



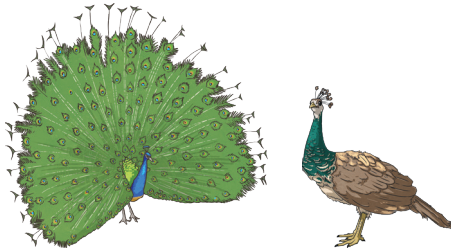
stick insect on a twig

Male and Female Animals

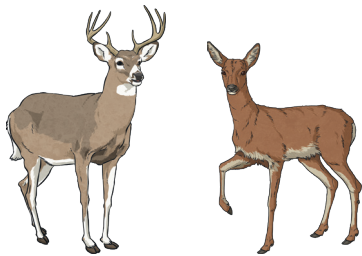
Male and female animals often look different. Identify and write down the differences between each pair of animals below.



lion and lioness



peacock and peahen



stag deer and hind deer



rooster and hen

My Pledge to Wildlife

As responsible citizens, we can all take action to help wild animals to survive and thrive. Winter can be an especially testing time for local wildlife due to the change in weather and the challenge of finding food. What could you pledge to do to help wild animals this winter? Come up with two different pledges, one for at school and one for at home, and write or draw each pledge below. Then, try to stick to them!



My Pledge to Wildlife

Write or draw your
pledge here

