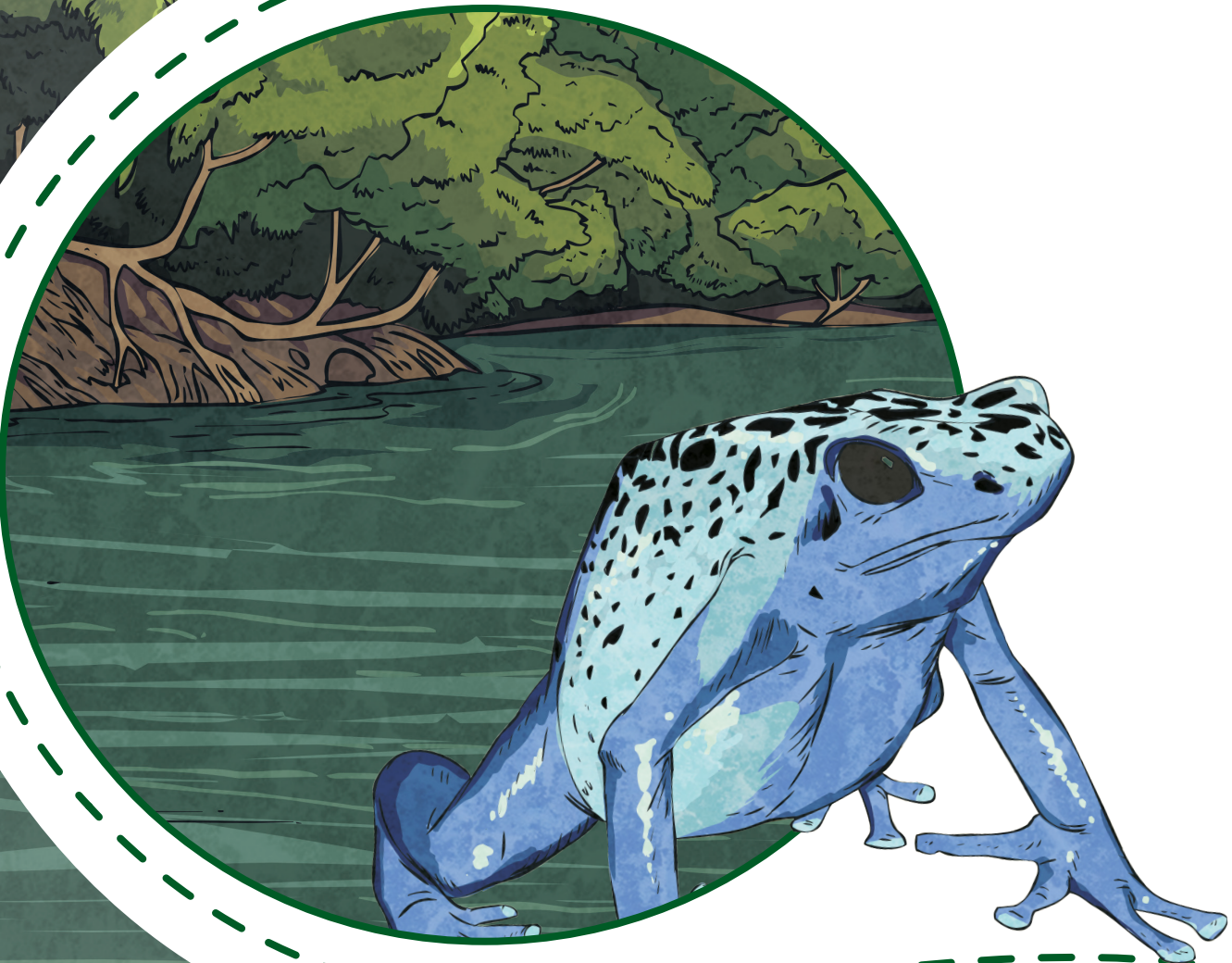


Creatures and Colour



Camouflage

Match each camouflaged animal to its habitat and its predator by drawing a line between them.

Predator

Camouflaged Animal

Habitat

owls and raccoons

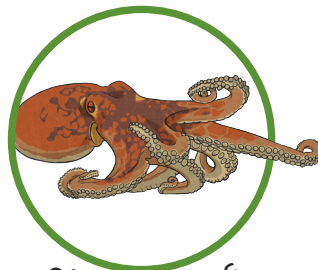


Arctic hare

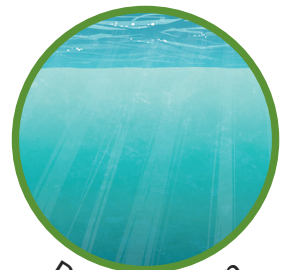


Madagascan forest

snakes and birds



giant octopus



Pacific Ocean

seals and sharks



panther chameleon



Arctic tundra

foxes and wolves



barred owl



North American forest

Habitats and Adaptation

Animals camouflage themselves in order to hide away from their predators or in some cases to sneak up on their prey. Match the animals below to the feature or strategy they use to camouflage themselves or to thrive.



tiger in long grass

different colours front and back (countershading)



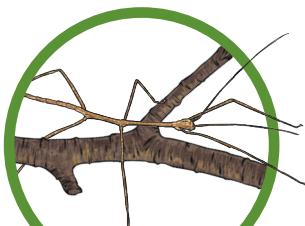
Gaboon viper on the forest floor

twig-like body that sways like a leaf in the wind



penguin in the Southern Ocean

stripes that blend in with foliage and shadows

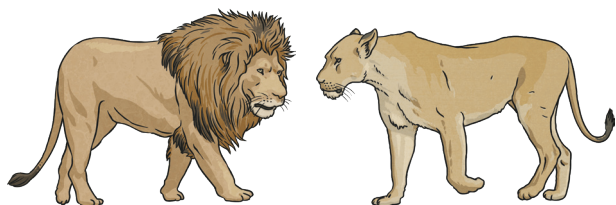


stick insect on a twig

flattened head that looks like a leaf or patterned skin that looks like leaves

Male and Female Animals

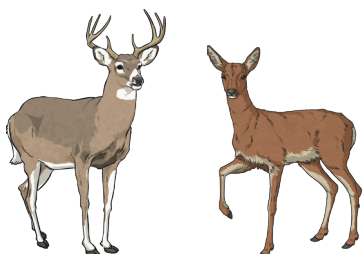
Male and female animals often look different. Identify and write down the differences between each pair of animals below.



lion and lioness



peacock and peahen



stag deer and hind deer



rooster and hen

My Pledge to Wildlife

Winter can be a more difficult time for wildlife because of the change in weather and the challenge of finding food. What could you pledge to do to help wild animals this winter? Come up with two different pledges, one for at school and one for at home, and write each pledge below. Then, try to stick to them!



My Pledge to Wildlife

Write or draw your
pledge here

