

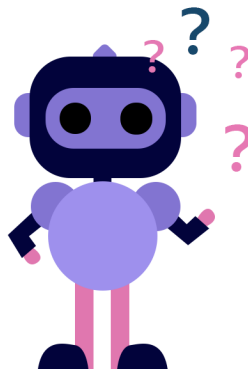
**Activity 1:** Decide whether the statements below about artificial intelligence are AI facts, or AI lies. Draw a line to the correct answer.

All machines that use AI are robots.

Some mobile phones use face recognition AI technology to unlock the screen.

AI systems follow rules made by people.

**AI FACT**



**AI LIE**

**Activity 2:** Below are four examples of AI safety risks. Circle the action you think is the best solution for avoiding the risk.

You've found what looks like AI-generated fake news. Should you...

- a. check the facts on a reliable news site
- b. share the news story with friends
- c. believe it – it's probably OK



You think a message might be an AI-created scam. Should you...

- a. click the link to check if it is real
- b. forward to friends for advice
- c. delete if you don't recognise the sender

There's a funny new celebrity picture online but is it real? Should you...

- a. reshare the picture with friends
- b. check the picture for clues that it's been faked
- c. tell everyone the picture is real

An AI game bot asks you to spend money on an add-on. Should you...

- a. turn off the game and never play it again
- b. ask an adult before paying for add-ons
- c. buy the add-on - it can't be real money



**Activity 3:** Create a poster for your classroom with your top tip for staying safe online in an AI world.

