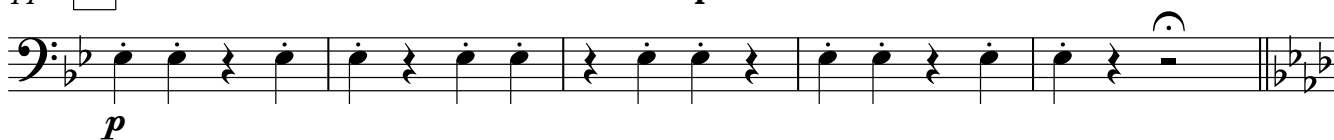
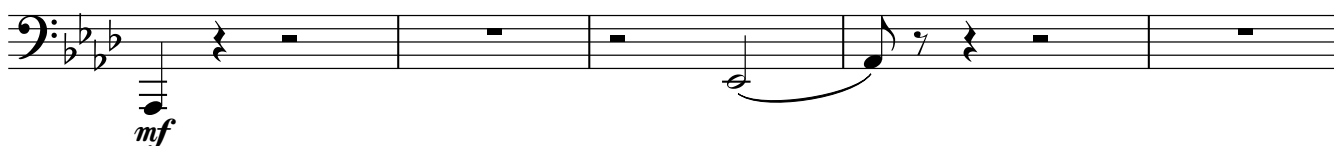
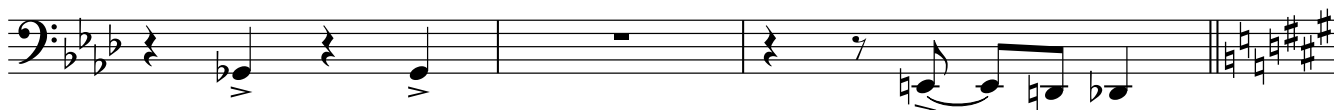
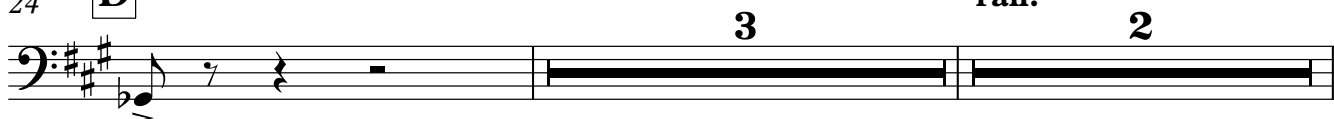
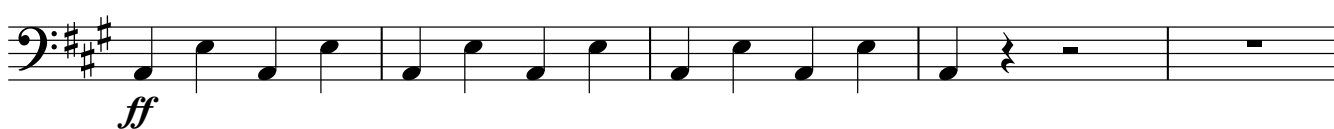


## Rhapsody in Blue

George Gershwin  
arr. Iain Farrington**Molto moderato** (♩ = c.80)

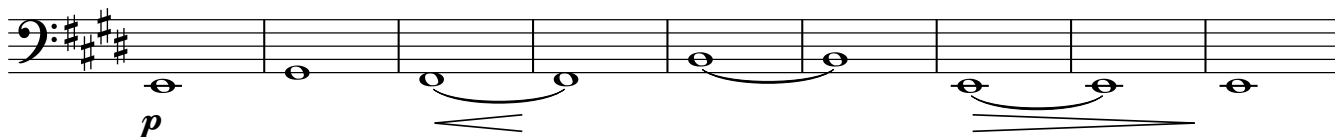
7

11 **A** **Più mosso****poco rit.**16 **B** **a tempo**21 **C** **Più mosso**24 **D** **Scherzando (commodo)****rall.**30 **E** **Tempo giusto**

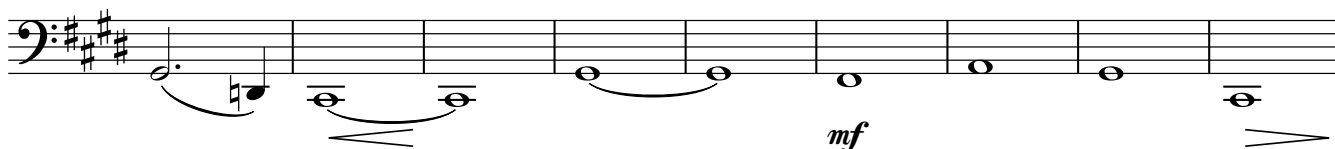
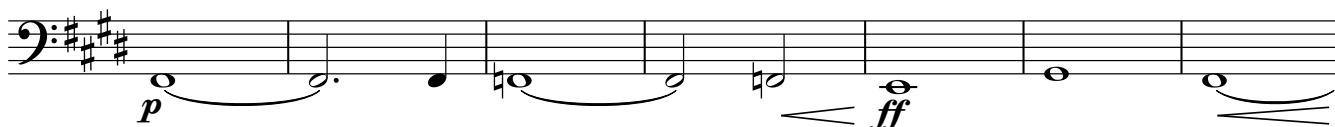
35

39 **F****G**



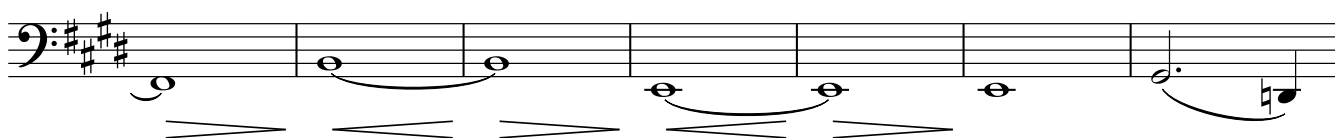
101 **L** Andantino moderato, con espressione

110

119 **M** rit.**N** Grandioso ma non troppo

126

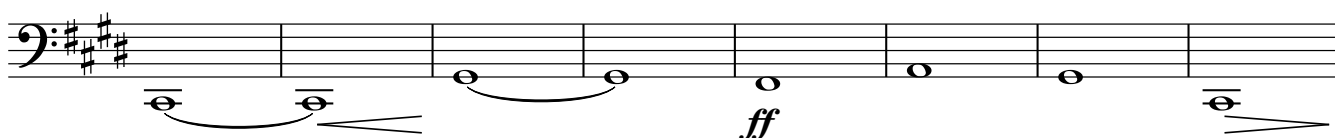
## Grandioso



133

## accel.

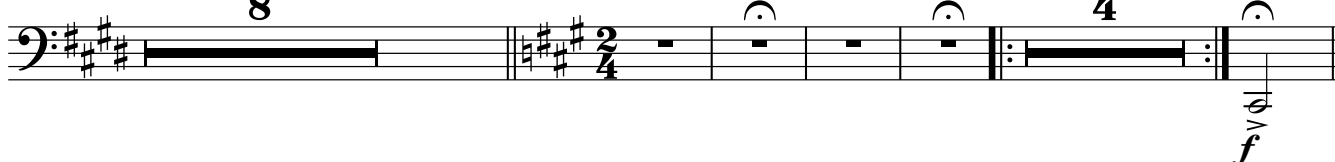
## allargando



141

**O**

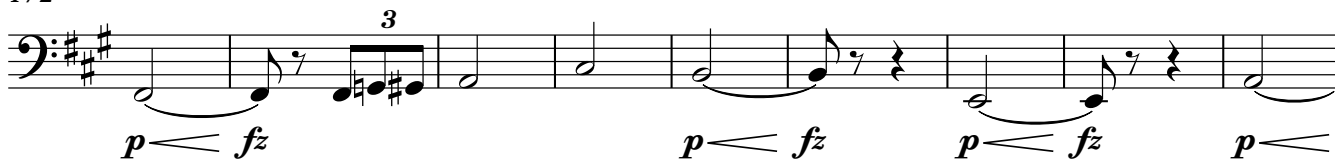
## Agitato



158

**P** Allegro agitato e misterioso**Q** Pomposo

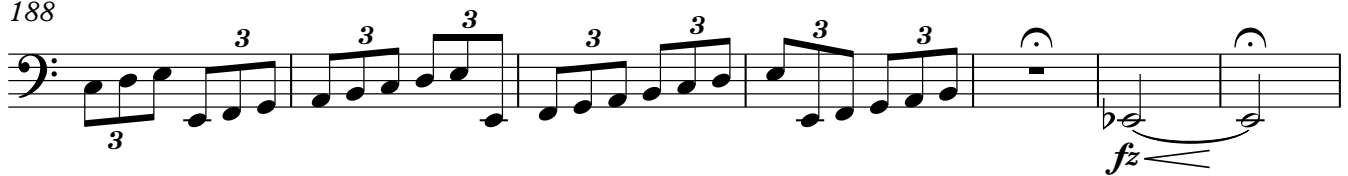
172



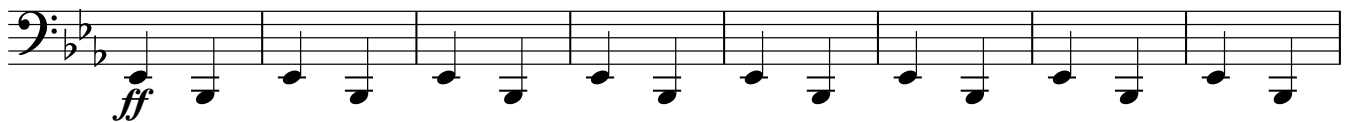
181

**R** Molto stentando

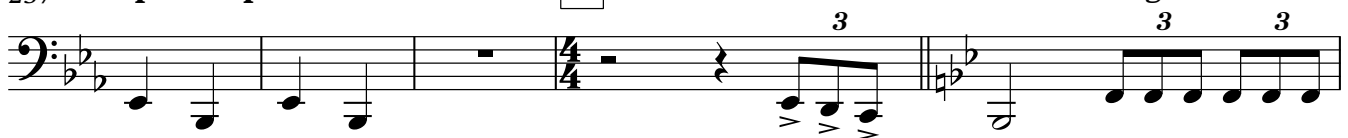
188

195 **S** Agitato

204

215 **molto marcato** **poco rit.**223 **T** Grandioso

231

237 **poco a poco rit.****U****Molto allargando**

242

**molto rit.**