



Reading times and dates - answers

1. What is the date of the first Monday in March? 02/03/09
2. Which day of the week is 04/06/09? Thursday
3. Easter Sunday is the second Sunday in April of this year. What date is Easter Sunday?

12/04/09

4. What day of the week is Christmas Day? Friday

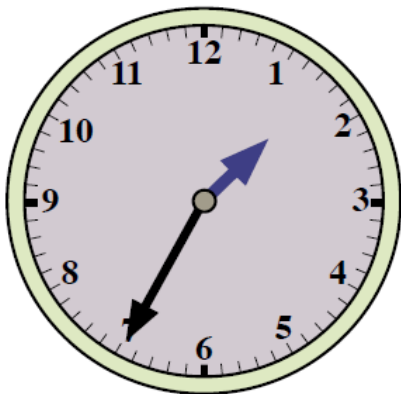
Can you read the times on these clocks?

5.



The clock shows **20 minutes past 4** or **twenty past four**, or **four twenty**.

6.



The clock shows **25 minutes to 2** or **25 to 2** or **1.35**

Do you know what these mean?

7. A millennium? A millennium is 1,000 years.
8. A second? A second is a unit of time. There are sixty seconds in a minute.
9. An analogue clock? Analogue clocks are the types shown in question 6. They have a 'face and 'hands'. They usually have the numbers 1 to 12 around the edge of the face.