



## Reading times and dates

Try these questions to see how much you know about measuring time. Look at a calendar for 2009 on the worksheet **Reading times and dates - 2009 calendar** and try these questions.

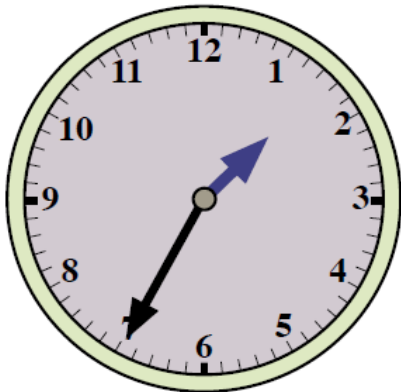
1. What is the date of the first Monday in March? \_\_\_\_\_
2. Which day of the week is 04/06/09? \_\_\_\_\_
3. Easter Sunday is the second Sunday in April of this year. What date is Easter Sunday? \_\_\_\_\_  
\_\_\_\_\_
4. What day of the week is Christmas Day? \_\_\_\_\_

Can you read the times on these clocks?

5.



6.



Do you know what these mean?

7. A millennium? \_\_\_\_\_
8. A second? \_\_\_\_\_
9. An analogue clock? \_\_\_\_\_

Now check your answers with those on the answer sheet. How did you do?

If you are having problems with most of these questions you need to do some work on this topic at Entry Level 3.