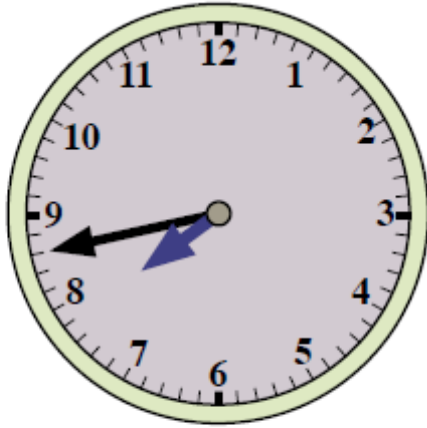


### Converting between the 12 hour and 24 hour clock

Read these examples then try the questions below.



This clock shows 43 minutes past 7, as there are 43 minutes if you count clockwise from the 12 round to where the minute hand points. Or you could say that it shows 17 mins to 8 as there are 17 minutes if you count anticlockwise from the 12 to where the minute hand is pointing.

For the digital clock, remember to convert 16.21 into 12 hour time by taking away from 12 the number in front of the point.  $16 - 12 = 4$ , so the second clock shows 21 minutes past 4, or 4.21pm. (To change a time into 24 hour time, add 12 to the number in front of the point.)

Now have a go at working out these times:

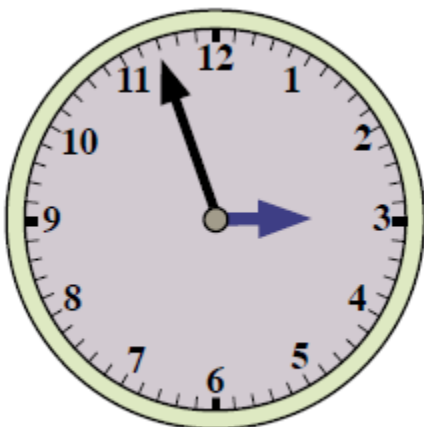
1.



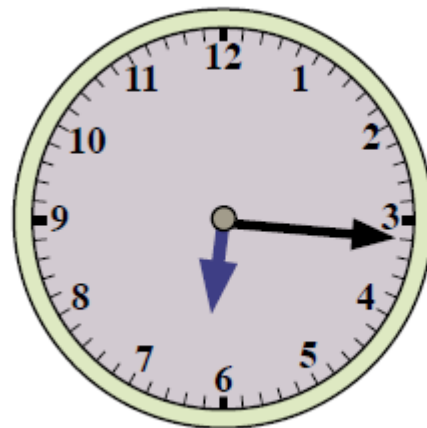
2.



3.



4.



5. What is 23.14 in 12 hour time? \_\_\_\_\_

6. What is 3.38 pm in 24 hour time? \_\_\_\_\_