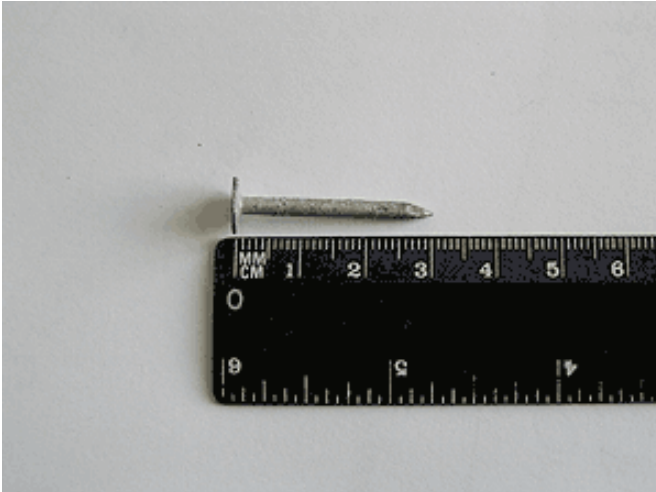


## Reading scales when measuring lengths

When measuring lengths, you use scales on rulers and tape measures.

Here's an example of reading from scales:



- Starting from zero, the nail stretches up to the 3 cm mark.
- Each cm is marked but there are unmarked divisions in between.
- These divisions divide each cm into ten parts.
- Each division is equal to 1 mm because  $10 \text{ mm} = 1 \text{ cm}$ .
- The nail measures 3 cm or 30 mm.

### Remember

- Not all divisions on scales are marked.
- Make sure you start to measure from 0.
- Check whether your ruler also has imperial measurement (inches) as well as metric measurement, and make sure you use the correct side of the ruler.