



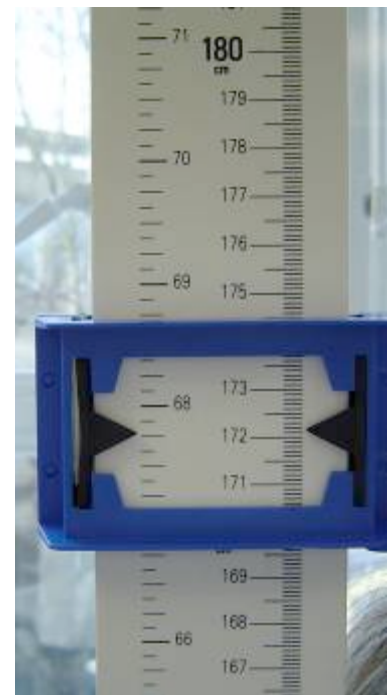
Converting between imperial and metric measures

Most of the industrial world (around 90%) uses **metric** measurements. The UK now officially uses metric measurements for most things but **imperial** measures are still widely used. Imperial measurements have been used in Britain for hundreds of years. In the USA measurements with the same names as the UK imperial system are nearly always used. The amounts are slightly different in many cases - eg the UK pint is about 20% more than the US pint. Imperial and metric measurements are examples of standard measurements.

Some examples are given below. Can you think of any more?

It's useful to know the rough conversions between imperial and metric measurements. A guide is shown below:

Imperial	Metric
1 inch	about 2.5 cm
1 foot	30 cm
1 yard	almost 1 m
1 mile	just over 1.5 km
1 ounce	about 30 g
1 pound	about half a kg
1 stone	about 6.5 kg
1 pint	just over half a litre
1 gallon	about 4.5 litres



It's also helpful to know equivalencies within the imperial system:

- 12 inches in a foot
- 16 oz in a pound
- 14 lb in a stone
- 8 pints in a gallon
- 32°F is 0°C