

The foolish and the brave



(spoken 2nd time) Darkness falls upon the land. Now mortal man must stand and wait.
The time for Heroes is at hand for they alone will mark our fate.



1. With - in these walls, — with-in these walls, —
2. The gods of war — (the gods of war) a-wake once more, —



sha-dow of dark-ness all a- round. —
they ho-nour the fool - ish and the brave. —



The dogs of war — (the dogs of war) are loose once more —

(RAP)

For we take these four walls, we gotta go to war. Be afraid to sleep, better lock your door. I don't wanna wait 'til they turn the key.



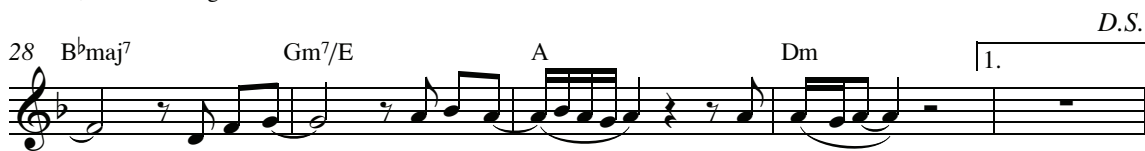
and on-ly the strong - est will sur- vive, — will sur- vive. -

I don't wanna brag but I'm built to last. See, I'm the greatest of the great, leader of the way, yeh, but I don't play. Follow me from A to B.



And all that we planned is lost in the sand

Tell me, who's the original hero?



— just as sure — as the sun — goes down. —



The wall tum- bles down, — it falls to the ground





2

37 B^bmaj⁷ Gm⁷/E A Dm

— just as sure_ as the world_ goes a- round._____

A musical staff in treble clef with a key signature of one flat. It contains a melody with lyrics: "just as sure_ as the world_ goes a- round._____". Chords B^bmaj⁷, Gm⁷/E, A, and Dm are indicated above the staff.

42 A B^b

A musical staff in treble clef with a key signature of one flat. It contains a melody starting with a double bar line. Chords A and B^b are indicated above the staff.

45 A Dm

A musical staff in treble clef with a key signature of one flat. It contains a melody starting with a double bar line. Chords A and Dm are indicated above the staff.