

LAKSHMI AND THE CLEVER WASHERWOMAN



RESOURCE PACK
KS1 / AGE 5 - 7

Traditional Tales - Lakshmi and the Clever Washerwoman

Resource Pack by Siobhan Skeffington

1: Lakshmi and the Clever Washerwoman - Part one	3
2: Lakshmi and the Clever Washerwoman - Part two	5
3: Resource Sheets	8

Introduction

This **Resource Pack** has been written for KS1 (Years 1 and 2). However, most of the content could be adapted for LKS2 (Years 3 and 4) too. The lesson plans address the main skills in the reading and writing journey:

- **The big question** - probing deeper thinking around a topic
- **Vocabulary** - exploring any unfamiliar vocabulary / pre-teaching
- **Reading skills** - linked to the curriculum skills
- **Bringing the text to life** - immersing children in the text / clip
- **Grammar, Punctuation & Spelling** - application of a skill
- **Main writing activity** - including opportunities to plan
- **Proof-reading / Editing** - making simple revisions and additions
- **Additional writing activities** - opportunities to extend learning and master skills

All of the Resource Sheets can be found within the Pack. However any words **that appear in blue** are hyper-linked to the online location of the resource, allowing you to conveniently display resources on a web page or to print individual resources.

Siobhan Skeffington is an Education Consultant, Author and Leading Teacher with 30 years experience teaching in the UK and overseas.



1: Lakshmi and the Clever Washerwoman

- Part one

Introduction

Lakshmi is the Hindu goddess of wealth and good fortune. In this story it is a special time of year, almost the festival of Diwali. This is when the goddess Lakshmi will bless the people with good luck when she sees they have honoured her by putting little lamps in their windows houses.

Long ago the King and Queen lived in a fine palace and every Diwali the King gave the Queen special presents. One year he gave her a beautiful necklace made of pearls. The Queen thought it would be safe to leave her necklace on a rock by the riverbank when she went for a swim. However, a crow swooped down and flew off with the necklace. The crow then dropped the necklace by a poor Washerwoman washing her clothes. She was astonished but knew she must keep it safe because it belonged to someone else.

The big question(s)

- What can you tell about the character of the Queen?
- Should you keep something you find?
- What is *faith*?

Vocabulary to discuss

Share **Resource Sheet 1** - the Vocabulary sheet: *King, Queen, palace, sari, bamboo, crow, palm trees, peacock*

Further discussion needed: *trees swayed, lanterns, precious, valuable necklace, glinting, crouch down*

Reading activity: what do you remember?

Retrieval and inference skills

Watch the episode and read **Resource Sheet 2** - the Illustrated text of Part one of the story.

Reminder for KS1 pupils

- *When answering a retrieval question you need to pick out information directly from the text.*
- *When answering an inference question you will need to work out what the author is suggesting using clues from the story which are not directly written.*

1. Where did the King and Queen live?
2. Why did the people put little lamps in their houses at night?
3. On what day did the King buy the Queen's gift?
4. What were the three different gifts the King had given the Queen?
5. What do you think the King would have said to the Queen when she told him about losing the necklace?
6. Why didn't the washerwoman keep the necklace for herself?

These questions use both *retrieval* and *inference* skills.

Share **Resource Sheet 3**. Ask the children to decide which they think are *retrieval* questions and those they think are *inference* questions by placing a tick in the correct box. Children can write their own retrieval and inference question to ask a friend using the text.

Bringing the text to life

Creating empathy

- Imagine you are the Washerwoman.
- Close your eyes and take a deep breath.
- Think about how it must feel to have to wash your clothes in the river every day.
- Act out washing your clothes and scrubbing them so they are clean.

- You would have to wash them for a long time to get all the dirt out, as the roads are very dusty and dirty.
- Now close your eyes again and imagine seeing a beautiful necklace land in front of you.
- In your mind study the necklace in detail. Use your senses:
 - What can you see?
 - How does it feel: is it smooth or rough?
 - Does it feel cool or warm to touch?
 - What does it make as you move it in your hands?
 - Does it smell of anything?
 - May be the perfume of the person who wore it?

Share **Resource Sheet 4**. Write in the speech bubble what the Washerwoman is thinking as she looks at the necklace.

- Think about how she would have been feeling.
- What interesting words could you use to describe her feelings?
- Discuss and share your ideas.

Grammar, Punctuation & Spelling

When do we use capital letters and full stops?

Recap use of capital letters: they are mainly used for the first letter of sentences, for names, days, and months as well as for the first-person pronoun as a capital I.

Recap the use of full stops: full stops are used at the end of a sentence.

Share **Resource Sheet 5**. Explain that you would like the children to be detectives and help you track down some errors! In the extract there are seven errors that need correcting.

- Can children find the missing capital letters and full stops?
- Write them in a different colour that stands out.
- Share the answer section of the sheet to check whether they have found all the errors.

Main writing activity

Reward poster

Create a 'Reward' poster for the necklace from the King and Queen using **Resource Sheet 6**. Who is your audience? The people in the city.

Reward posters will usually include:

- A description of the wanted item.
- A picture of the missing item.
- The reward - the amount of money offered for the return of the item.
- Where you take the item to return it.

Think about what else you may need to include. Think about the layout: it needs to be bold, clear and persuasive!

Proof-reading / Editing

Share **Resource Sheet 7**. Check the sentences make sense. Correct the spellings using a coloured pen.

1. She staped the cool water to swim. (stepped in)
2. The crow flu away. (flew)
3. The Washerwoman washed clothes for the peple who paid him. (people, her)
4. It neds to be kept in a safe place. (needs)

Additional activities

- Design something for the Queen to put her necklace in safely - perhaps something with a cover.
- Create your own song to the music of 'The Twelve days of Christmas' about the different presents the King could give to the Queen. Choose at least six different presents. 'On the first day of Diwali my true love gave to me...'
- Write an account of the episode from the crow's point of view.



2: Lakshmi and the Clever Washerwoman - Part two

Introduction

The Washerwoman decided to hide the necklace in her basket and take it home until she could find out who it belonged to. On her way home she heard her neighbours gossiping and saying the Queen had lost the necklace and that the King had put up a huge reward for its return.

The Washerwoman went to the palace to return the necklace. However, when the King offered her a pot of gold coins as a reward she explained that she would rather be the only person in the city allowed to light a candle for the goddess Lakshmi that night. When Lakshmi arrived later that evening she found only one light and so she blessed the Washerwoman and her family with good health and happiness for years to come.

The big question(s)

- What would it be like to live in the place where the story is set?
- What is more important: *money* or *happiness*?

Vocabulary to discuss

Share **Resource Sheet 1** - the Vocabulary sheet: *candle, gold coins*

Further discussion needed: *crowded, gossiping, announced, perfect lawns, frowned, honour*

Reading activity: what do you remember?

Finding evidence

Watch the episode and read **Resource Sheet 8** - the Illustrated text.

Why is she called the 'clever washerwoman'? Find evidence to show how clever she is. Consider these questions:

1. Where did she hide the necklace? Why did she hide it?
2. How did she find out who the necklace belonged to?
3. How did she keep the necklace safe until she was able to go to the palace?
4. How did she manage to get into the palace?
5. Why didn't she want the pot of gold coins as a reward?

Bringing the text to life

Hot-seating activity

- Imagine you are the King or Queen being interviewed by a newspaper reporter.
- Then imagine you are the Washerwoman being interviewed.
- Take it in turns to be the interviewer or interviewee. Consider these questions to ask the King or Queen:
 1. What happened today at the palace?
 2. Were you surprised when the Washerwoman refused the pot of gold coins?
 3. What did you think of her choice of reward? Why?
- Consider these questions to ask the Washerwoman:
 1. Where did you find the necklace?
 2. How did you keep it a secret?
 3. How did it feel knocking on the palace door?
 4. Do you think you made the right choice for your reward? Why?

Grammar, Punctuation & Spelling

Apostrophes for contraction

Recap apostrophes for contraction: they are used to show when two words have been joined together; the apostrophe shows that letters have been omitted.



Look again at **Resource Sheet 2** and **Resource Sheet 8** - the Illustrated texts. Ask children to find where apostrophes for contraction have been used in the story.

Then share **Resource Sheet 9**. Can children write out the two words that have been joined together in each case?

1. 'She's so upset!' said another. (**She is**)
2. She didn't want her neighbours knowing she had the very same neck-lace in her basket! (**did not**)
3. 'No, I don't want your gold coins.' (**do not**)
4. Just as she had asked, there wasn't a lamp or light to be seen, except one. (**was not**)
5. 'I thought they'd welcome me tonight.' (**they would**)
6. 'Have they forgotten it's Diwali?' (**it is**)

Ask children to write three sentences of their own related to the story using apostrophes for contraction.

Main writing activity

Newspaper report

- Write a newspaper report about the strange events at Diwali for that year when only one person could light a candle.
- Ask the children to imagine they are a news reporter determined to write an exciting piece after interviewing both the King and Queen and the Washerwoman.
- Encourage eye-catching language to grab the reader's attention.

Look at some different types of newspaper articles. Who is your audience? The people in the country beyond just the local city. Use **Resource Sheet 10** - a newspaper template. Newspapers will usually include:

- Bold headings
- Subheadings
- A 'by line' - the name of the reporter who has written the article
- Pictures
- Captions

- Interviews - often presenting more than one point of view
Children could include references to what was said during the hot-seating activity: interviews with the neighbours of the Washerwoman and interviews with other people who live in the town. Ask children to think about what they need to include and to think about the layout.

Proof-reading / Editing

Find the mistakes

Share **Resource Sheet 7** again and complete the remaining sentences.

- Make sure the punctuation is correct.
 - Check the sentences make sense.
 - Correct the spellings.
 - Use a different coloured pen.
1. The Queen was pleased to see her pearls again. (**see**)
 2. She was happy to see Lakshmi (**.**)
 3. the Washerwoman went to the palace. (**The**)
 4. The King surprised was. (**was surprised**)

Additional activities

- Use **Resource Sheet 11** to complete the Word search puzzle.
- Write a description of Lakshmi using **Resource Sheet 12** - the Outline drawing of Lakshmi. What does she look like? What clothes is she wearing? What does she say? Encourage descriptive adjectives to bring her to life for the reader. Share with the children that Lakshmi is often depicted floating on a lotus flower.
- Use **Resource Sheet 13** to sequence the whole story. Put the story in order and write a sentence to go with each picture.
- Draw a plan of the route the Washerwoman takes to the palace. Where did she go? What shops did she pass? What landmarks did she pass? Use arrows and labels to show where she goes.
- Use **Resource Sheet 14** colour and label the palace.



Other Resource Packs from BBC Teach

KS1



Tiddalik the Frog

The traditional Aborigine 'Dreamtime' story of a very thirsty frog called Tiddalik is told in two episodes.



Anansi and the Moss-Covered Rock

The hilarious Afro-Caribbean story about the trickster spider is told in two animated episodes.



Little Red Riding Hood

The traditional tale is told in seven short animated video episodes.



Jack and the Beanstalk

The story is told in 14 short animations. The Pack is crammed with suggestions for learning activities.

KS2



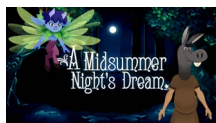
Carrie's War

Explore Nina Bawden's classic story of two children evacuated to Wales at the start of World War 2.



Treasure Island

Robert Louis Stevenson's classic pirate tale is explored through a variety of learning activities.



A Midsummer Night's Dream

Shakespeare's comedy is told in eight short animations in a specially-written adaptation for KS2.

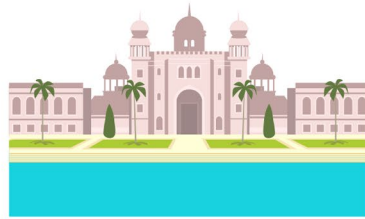
Lakshmi and the Clever Washerwoman



King



Queen



palace



peacocks



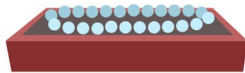
palm trees



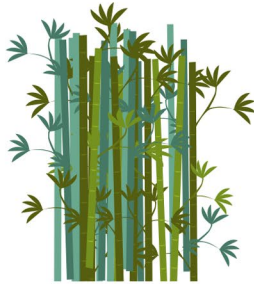
candle



sari



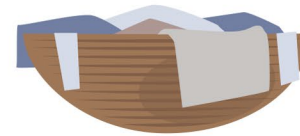
necklace



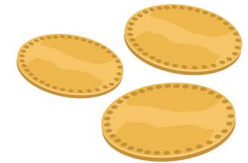
bamboo



crow



basket



gold coins

Lakshmi and the Clever Washerwoman

Part one

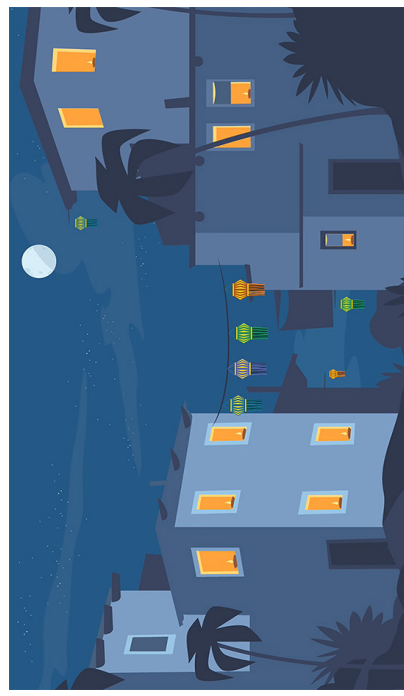


Long, long ago a King lived with his wife, the Queen, in a huge palace at the heart of a great city. The palace was built of pink stone and stood in magnificent gardens, where palm trees swayed and peacocks roamed the perfect lawns.

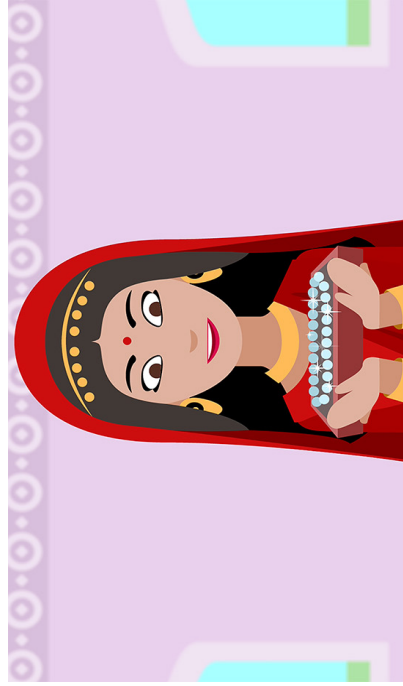
The King and Queen were getting ready to celebrate, for it was a special time of year. Tomorrow it would be Diwali: the festival to honour Lakshmi, the gentle goddess of wealth and good fortune.



Each year at Diwali people would put little lamps in their windows and place lanterns outside, hoping that Lakshmi would see their homes in the darkness of night, and bless them with good luck.



Every year, on the day before Diwali, the King would buy the Queen an expensive present. One year he had given her an elephant to ride around the palace gardens. Another year he had given her a sari covered in jewels. And this year the King's present to the Queen was no less grand: a beautiful necklace made of pearls!



‘It will be perfectly safe there,’ thought the Queen. ‘After all, no-one would ever dare to steal from the Queen!’ And with that she stepped into the cool water to swim.

The Queen was quite right of course. No person would ever dare to steal from the Queen.

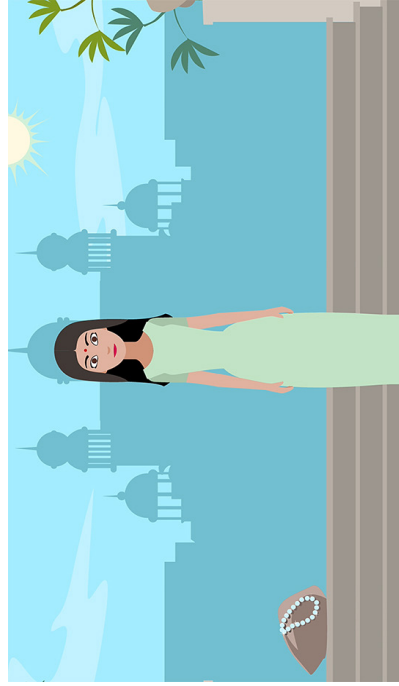
‘I can’t wait to show it off to everyone!’ said the Queen, as she took her husband’s present without a word of thanks, for - in truth - she was rather rude and ungrateful.

Each morning the Queen would go for a swim in a nearby river. Of course, she couldn’t risk damaging her valuable necklace, so this morning when she arrived at the river, she took it off and left it on the riverbank under a bamboo tree.



But a crow isn’t a person and on this day a crow, perched on a branch in the bamboo tree, looked down and spied the necklace glinting in the sun. In a flash, it swooped down, grabbed the precious treasure in its beak and flew away.

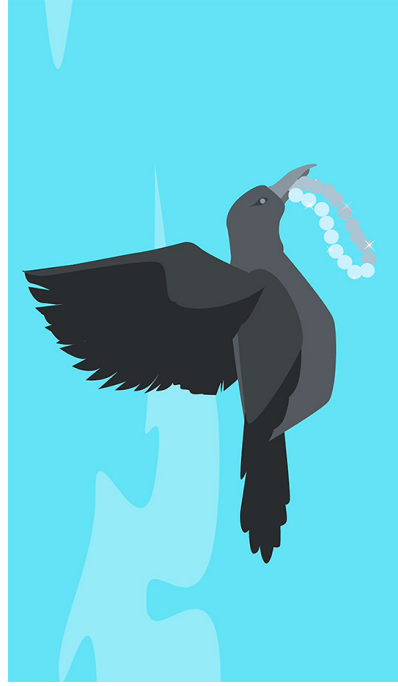
‘Stop! Stop!’ cried the Queen - but it was too late! Away flew the crow, further and further, until it was gone from the Queen’s sight.





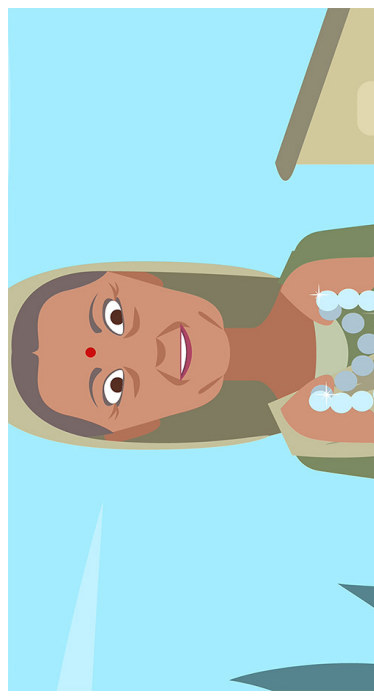
Some distance away, another woman was also by the river. Like the Queen, this woman came to the river every morning but, apart from that, she couldn't have been more different to the Queen. She was a washerwoman and every day she came from her home in the poorest part of the city to crouch down on the bank and wash clothes for the people who paid her.

The washerwoman was scrubbing a sari when she looked up and saw a crow overhead.



The crow had something glinting in its beak, something which the crow dropped, something which landed on the riverbank.

The washerwoman could hardly believe it! There, right beside her, glinting in the sunlight, was a necklace! She picked it up, to look at it more closely. It was very precious – she was sure of that – why, it looked like it was made from real pearls!



‘Who could such a valuable necklace belong to?’ she wondered. ‘And what should I do with it? If I sell it I’d be rich. I’d never need to scrub another sari for as long as I live!’

Then the washerwoman shook her head. ‘But the necklace isn’t mine to sell. One thing I do know. It needs to be kept safe. I shall take it home with me, until I can decide what to do with it.’

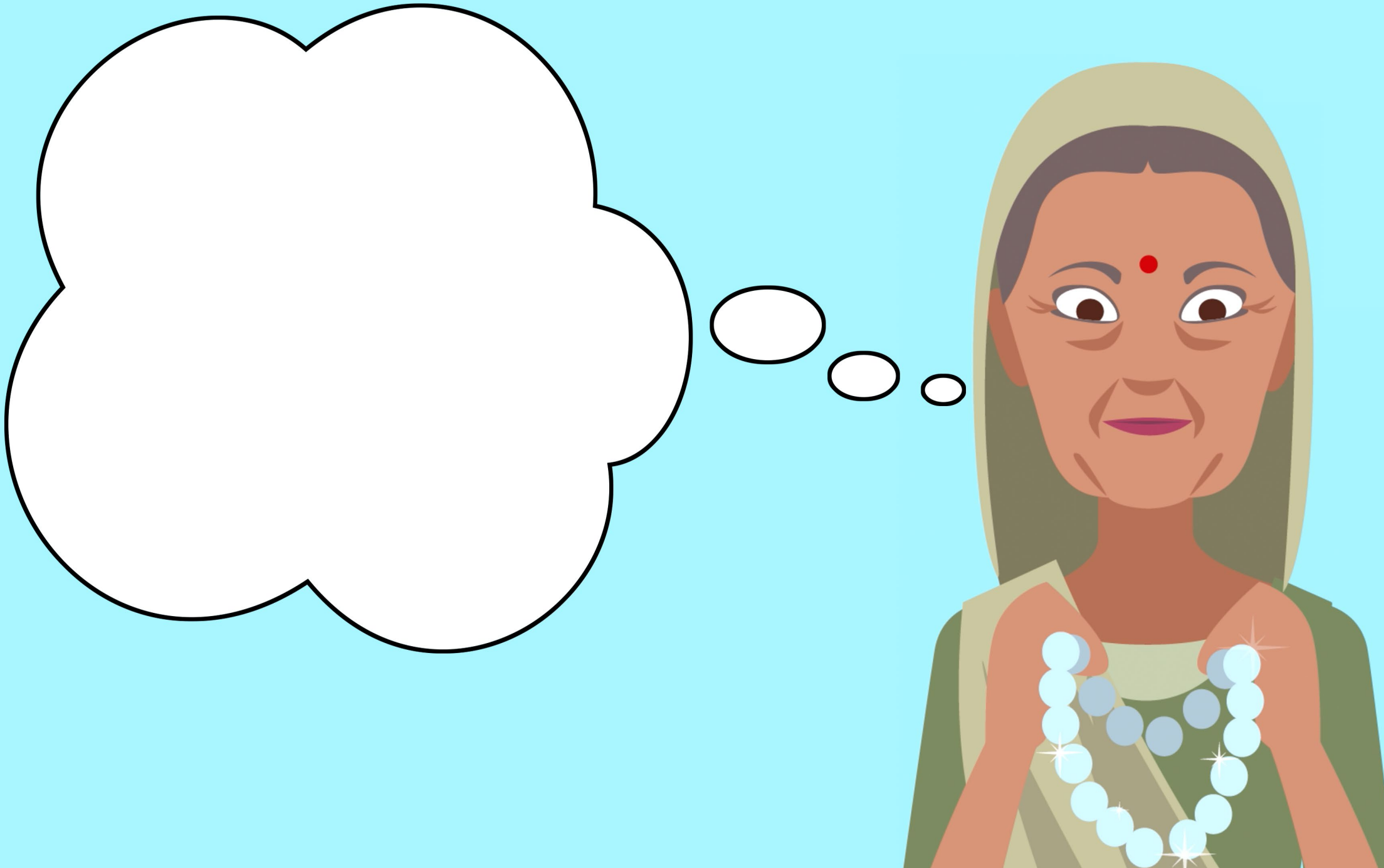
Resource Sheet 3

Put a tick in the correct box to show if the sentence needs **retrieval** or **inference** skills.
Make up your own retrieval and inference question to ask a friend.

Sentence	Retrieval	Inference
Where did the King and Queen live?		
Why did the people put little lamps in their houses at night?		
On what day did the King buy the Queen's gift?		
What three gifts had the King already given the Queen?		
What do you think the King would have said to the Queen when she told him about losing the necklace?		
Why didn't the Washerwoman keep the necklace for herself?		

Resource Sheet 4: What is the Washerwoman thinking?

Write in the thought bubble to show what she is thinking when she finds the necklace.



Resource Sheet 5: Find the mistakes

Correct the spelling and punctuation using a coloured pen.

There are seven mistakes to find. Then check your work with the answer sheet.

every year, on the day before diwali, the King would buy the Queen an expensive present. one year he had given her an elephant to ride around the palace gardens Another year he had given her a sari covered in jewels And this year the King's present to the Queen was no less grand: a beautiful necklace made of pearls!

'i can't wait to show it off to everyone!' said the Queen, as she took her husband's present without a word of thanks, for - in truth - she was rather rude and ungrateful



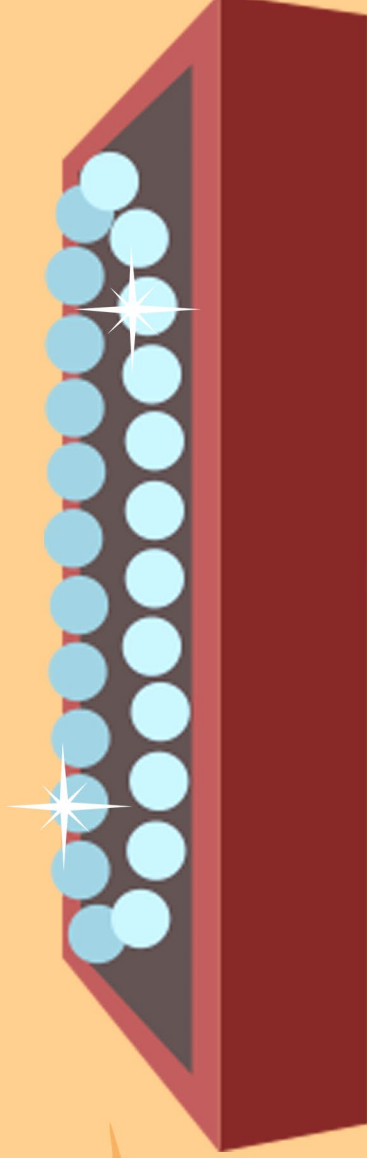
Every year, on the day before Diwali, the King would buy the Queen an expensive present. One year he had given her an elephant to ride around the palace gardens. Another year he had given her a sari covered in jewels. And this year the King's present to the Queen was no less grand: a beautiful necklace made of pearls!

'I can't wait to show it off to everyone!' said the Queen, as she took her husband's present without a word of thanks, for - in truth - she was rather rude and ungrateful.


Resource Sheet 6: Reward poster

Complete the Reward poster. Remember to include: what is missing, who has lost it, what the reward is and how it should be returned.

Reward!



Resource Sheet 7: Find the mistakes



Be detectives and find the grammar and spelling mistakes in these sentences.
Correct the mistakes using a coloured pen or pencil.

She steped the cool water to swim.

The crow flu away.

The Washerwoman washed clothes for the peple who paid him.

It neds to be kept in a safe place.

The Queen was pleased to sea her pearls again.

She was happy to see Lakshmi

the Washerwoman went to the palace.

The King surprised was.

Lakshmi and the Clever Washerwoman

Part two



The washerwoman carefully hid the pearl necklace at the bottom of her clothes basket and set off for home.

The washerwoman lived in a small hut in the poorest part of the city. It was a crowded, noisy place, where everyone knew everyone else. Keeping the necklace a secret wouldn't be easy.

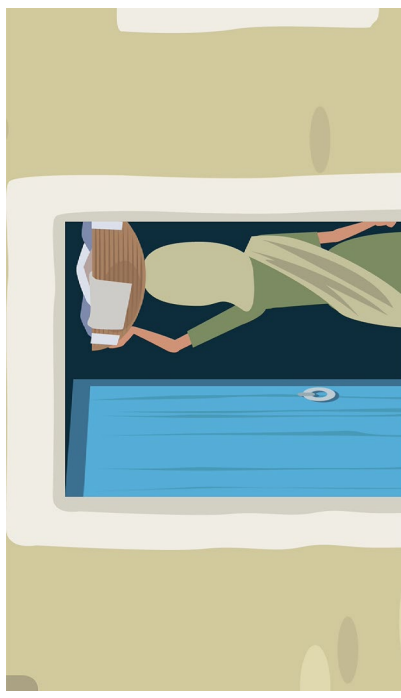
As the washerwoman made her way to her door she could hear her neighbours gossiping.



‘Have you heard?’ said one. ‘The Queen has lost a necklace made of pearls!’

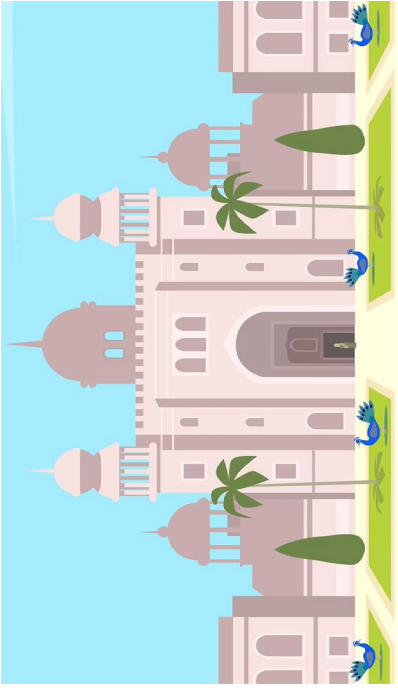
‘She’s so upset!’ said another.

‘The King has offered a huge reward to anyone who finds the necklace and returns it!’ announced a third.



The washerwoman quietly slipped inside her home and shut the door. She didn't want her neighbours knowing she had the very same necklace in her basket!

But now she knew who the necklace belonged to and she knew what she had to do.



The washerwoman waited for her neighbours to go inside, then she slipped out and made her way to the palace.

How grand the palace was with its pink stone walls, swaying palms, peacocks and perfect lawns! She knocked on the door and it was opened by a servant, who frowned at the washerwoman and was about to close it on her again, when she showed him the necklace.

His eyes lit up. ‘The necklace!’



Immediately the washerwoman was taken to see the King and Queen.

‘You found my necklace!’ cried the Queen, as the washerwoman bowed her head and offered it to her.

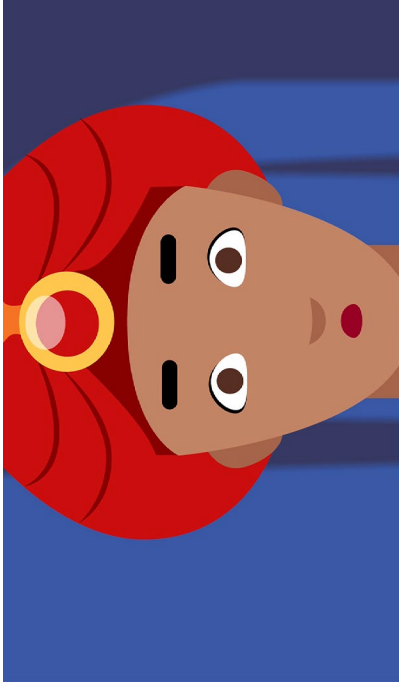
‘And now for your reward!’ said the King.



He clicked his fingers, and a servant entered with a pot full of gold coins. More money than the washerwoman had ever seen in her life!

But the washerwoman said simply: ‘Forgive me, but I do not wish to accept your reward.’

The King looked surprised. ‘Is the pot is not big enough? I will double the size - and the number of coins!’



‘No, I don’t want your gold coins.’

‘Then what *do* you want?’

‘Grant me a simple request. Tomorrow is Diwali. For my reward, issue an order: no-one in the entire city will be allowed to light a lamp in honour of Lakshmi, except me.’

The King looked surprised. What a strange request! But he said: ‘Of course, I am happy to grant your wish. I shall issue the order straight away.’

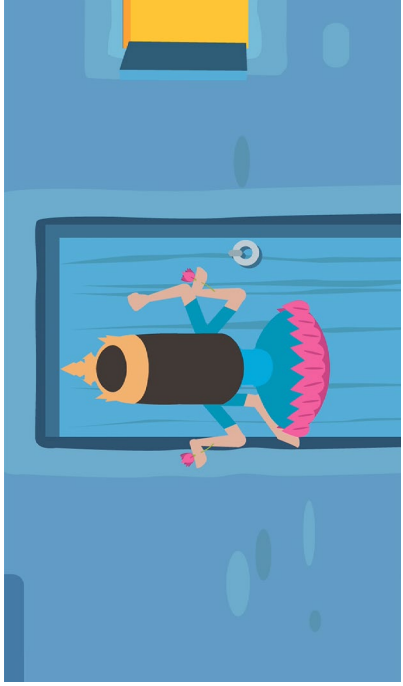


That evening the washerwoman looked out of her window. The next day would be Diwali, but the entire city was in darkness. Just as she had asked, there wasn’t a lamp or light to be seen, except one. The washerwoman lit a small candle, placed it on her door step - and waited.



When the goddess Lakshmi arrived in the city, all she could see was darkness. She felt shocked that her arrival had been ignored. ‘Where are my people?’ she wondered. ‘I thought they’d welcome me tonight. Have they forgotten it’s Diwali? Where are my lanterns? Where are my lights?’

Lakshmi was just about to leave when she spotted a single light shining in the poorest part of town.



Lakshmi looked at the washerwoman. In the entire city she was the only one to have lit a lamp in her honour.

‘I shall grant you your wish,’ she said with a smile.

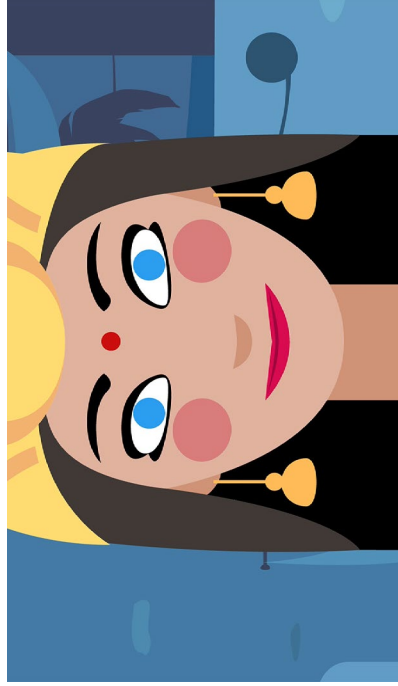
Lakshmi went to the door and knocked.

The door slowly opened.

‘Welcome, Lakshmi!’ said the washerwoman.

‘May I come in?’ asked the goddess.

‘You may, but only if you grant my family and I blessings for many years to come.’



Lakshmi was true to her word.



From that night onwards, the washerwoman and her family were blessed with good health, good luck and happiness for many years to come.

Resource Sheet 9: Apostrophes for contraction

Write in the boxes on the right the two words that have been joined together.
Make up a contraction of your own in the final boxes.

'She's so upset!' said another.

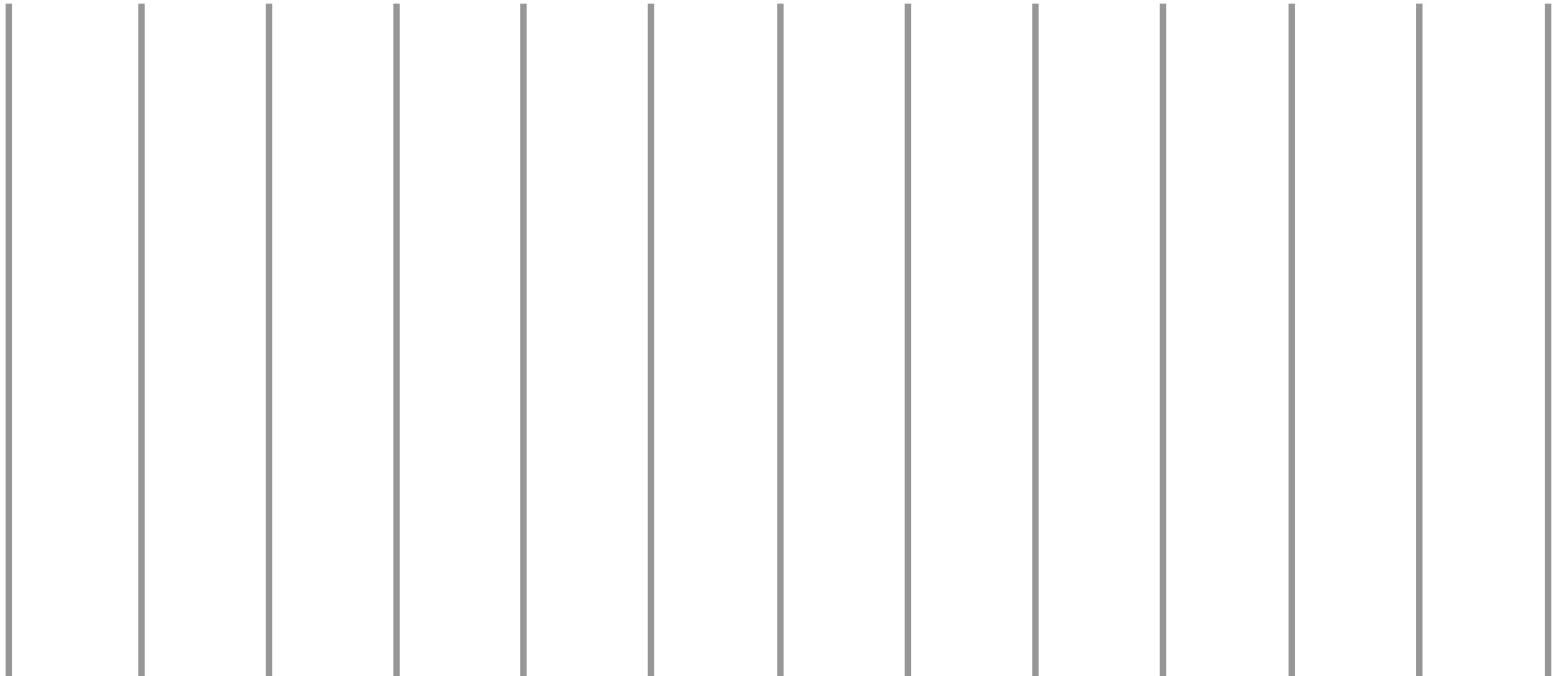
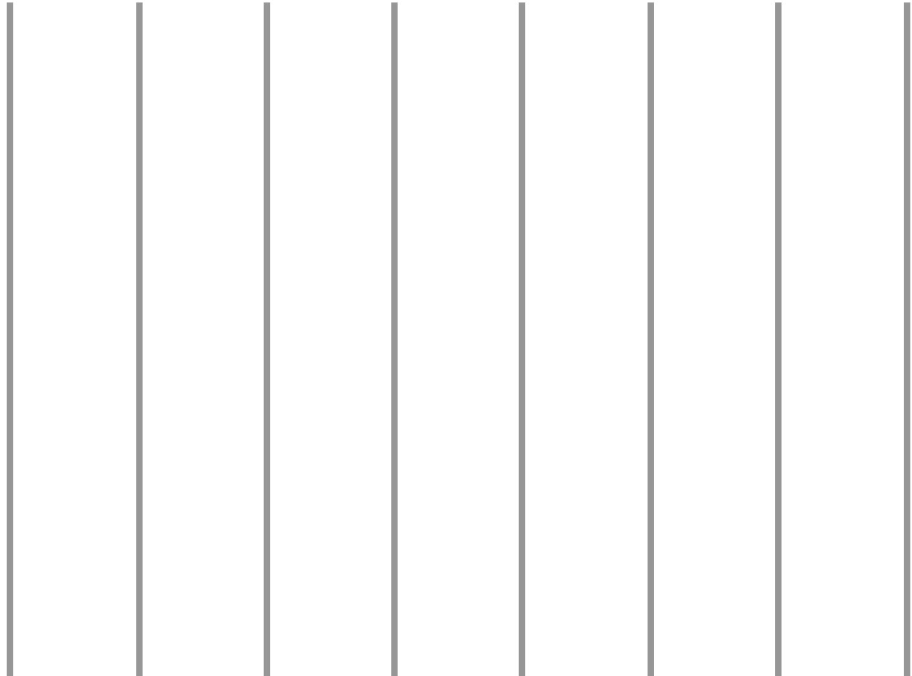
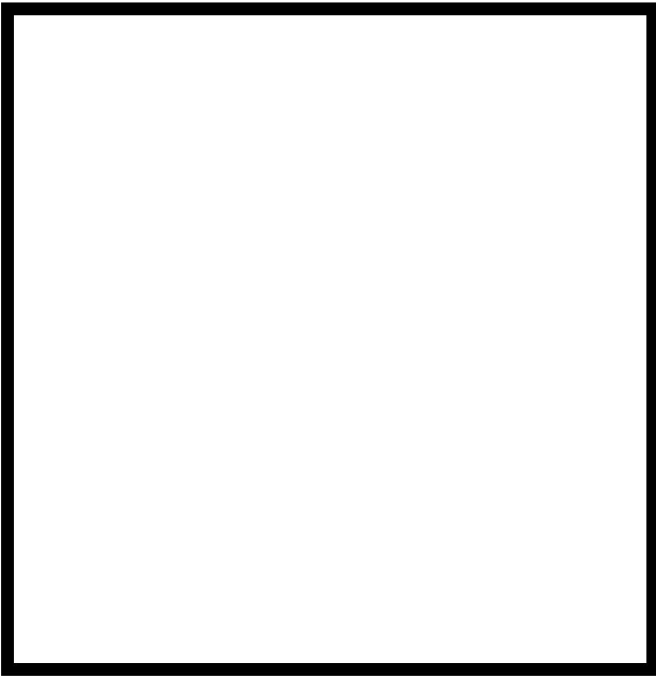
She didn't want her neighbours knowing she had the very same necklace in her basket!

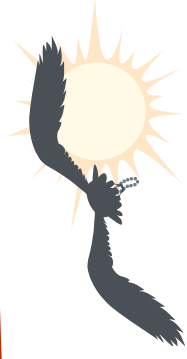
'No, I don't want your gold coins.'

Just as she had asked, there wasn't a lamp or light to be seen, except one.

'I thought they'd welcome me tonight.'

'Have they forgotten it's Diwali?'

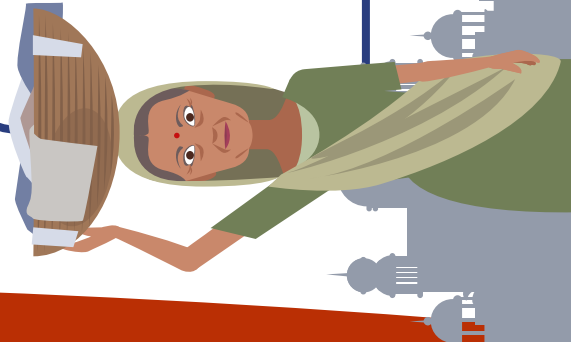




Lakshmi

and the Clever Washerwoman

K	P	A	L	A	C	E	E	O	W	S
I	H	M	O	Z	L	P	M	B	A	D
C	E	W	Q	U	E	E	N	C	T	A
R	N	K	M	T	V	N	A	F	L	R
O	L	A	N	C	E	K	R	F	S	K
W	A	S	H	E	R	W	O	M	A	N
L	K	J	N	Y	V	E	R	D	A	E
N	S	H	K	I	N	G	W	M	H	S
G	H	R	W	B	E	I	N	P	T	S
D	M	N	E	C	K	L	A	C	E	E
D	I	W	A	L	I	S	R	G	A	T



LAKSHMI
WASHERWOMAN
QUEEN
DIWALI
PALACE



CLEVER
KING
CROW
NECKLACE
DARKNESS



